
PLUG & PLAY AT ROCK CENTER

AGGRESSIVE PRICING, MOVE-IN READY SUBLEASE AVAILABLE

1 Rockefeller Plaza



Space Profile

Size: 4,291 SF

Floor: Partial 4th

Rate: Please inquire

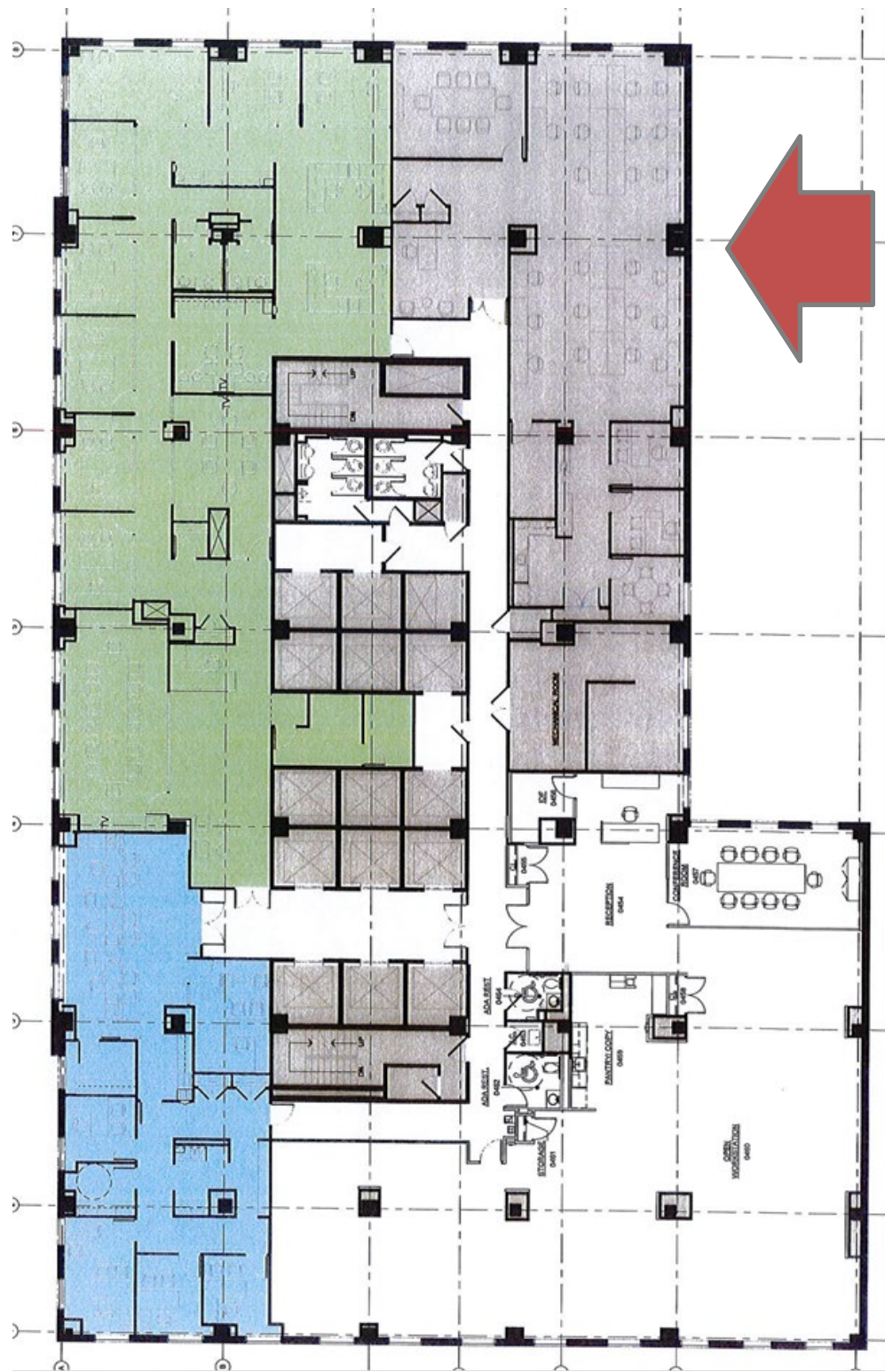
Availability: Immediate

Term: February 28, 2024

Key Highlights

- Partially furnished and wired
- 1 large conference room, 1 small conference room, 2 private offices, open area for 23 people, wet pantry and IT/Comm room
- Rock Center views

1 Rockefeller Plaza | Core & Shell Floor Plan

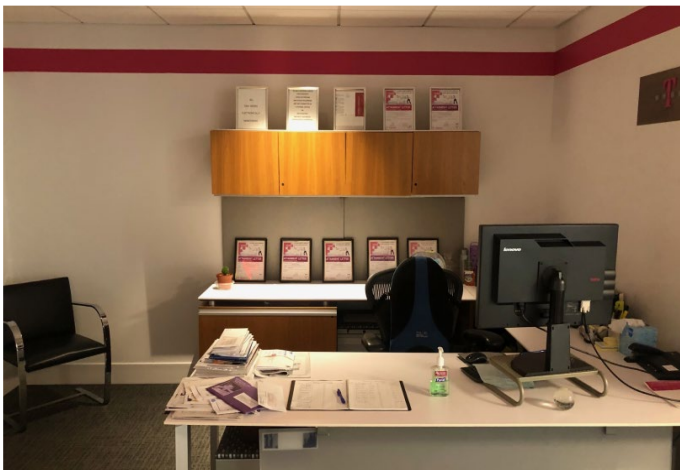




Large Conference Room



Small Conference Room



Office #1



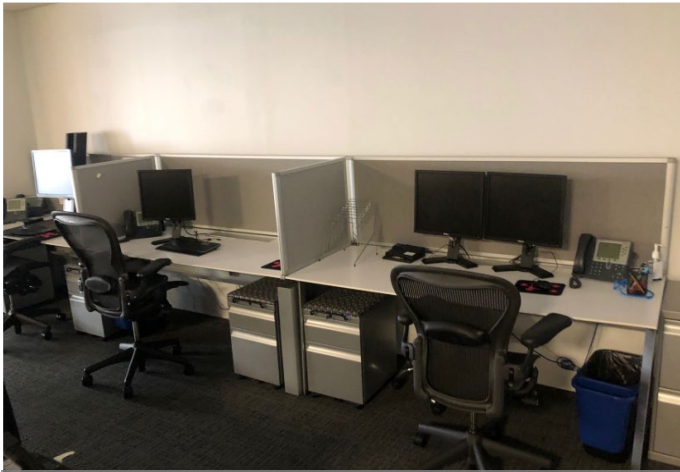
Office #2



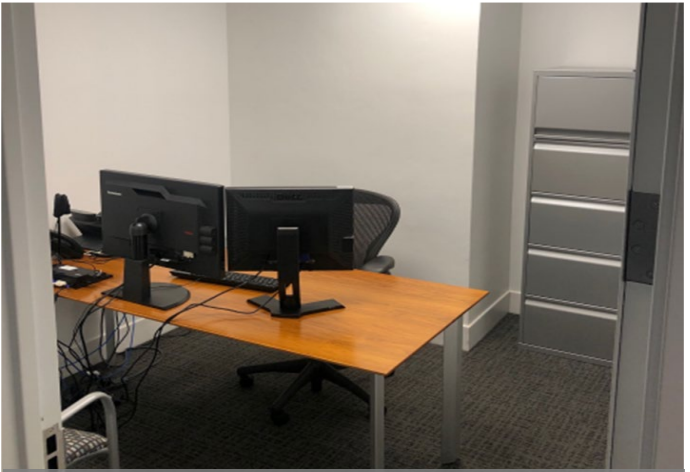
Bullpen



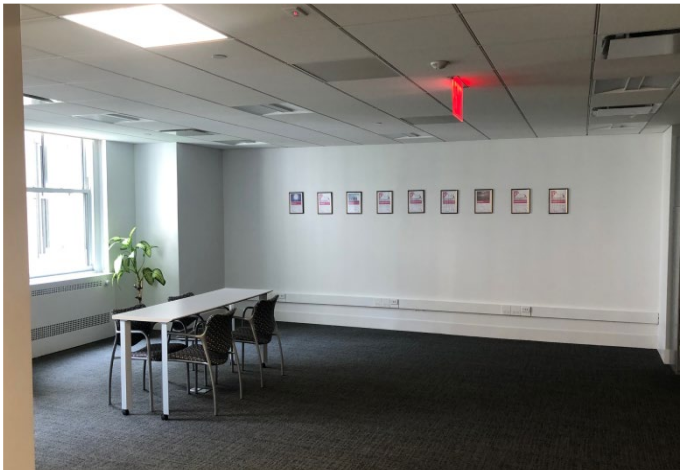
Bullpen



Workstations



Workstation



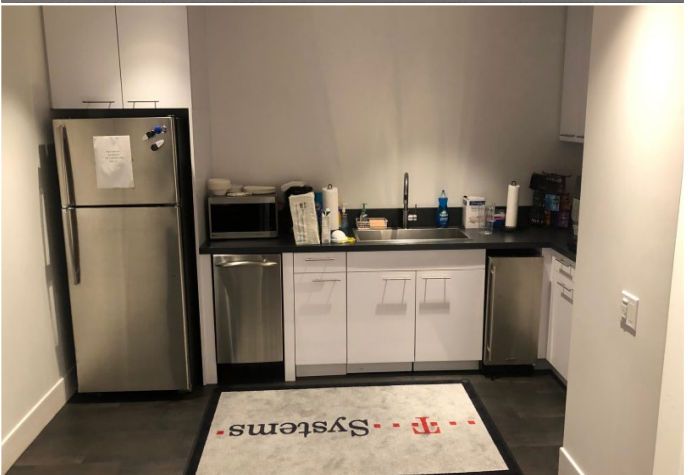
Open Area



Open Area



Copy Area



Pantry