



# FIFTH AVENUE

FULL FLOOR BOUTIQUE OFFICE SPACE IN THE HEART OF THE PLAZA DISTRICT





# ENTIRE 14TH FLOOR | 4,358 RSF

## Plug & Play Sublease Opportunity

---

Space has great exposure with large windows overlooking Fifth Avenue & 54th Street providing exceptional natural light

Stunning views of surrounding landmark buildings

Excellent credit Sublandlord and Landlord

Furniture can be made available

### **SQ. FOOTAGE**

4,358 RSF

### **POSSESSION**

Immediate

### **TERM**

June 29, 2025





◀ Windowed glass fronted offices

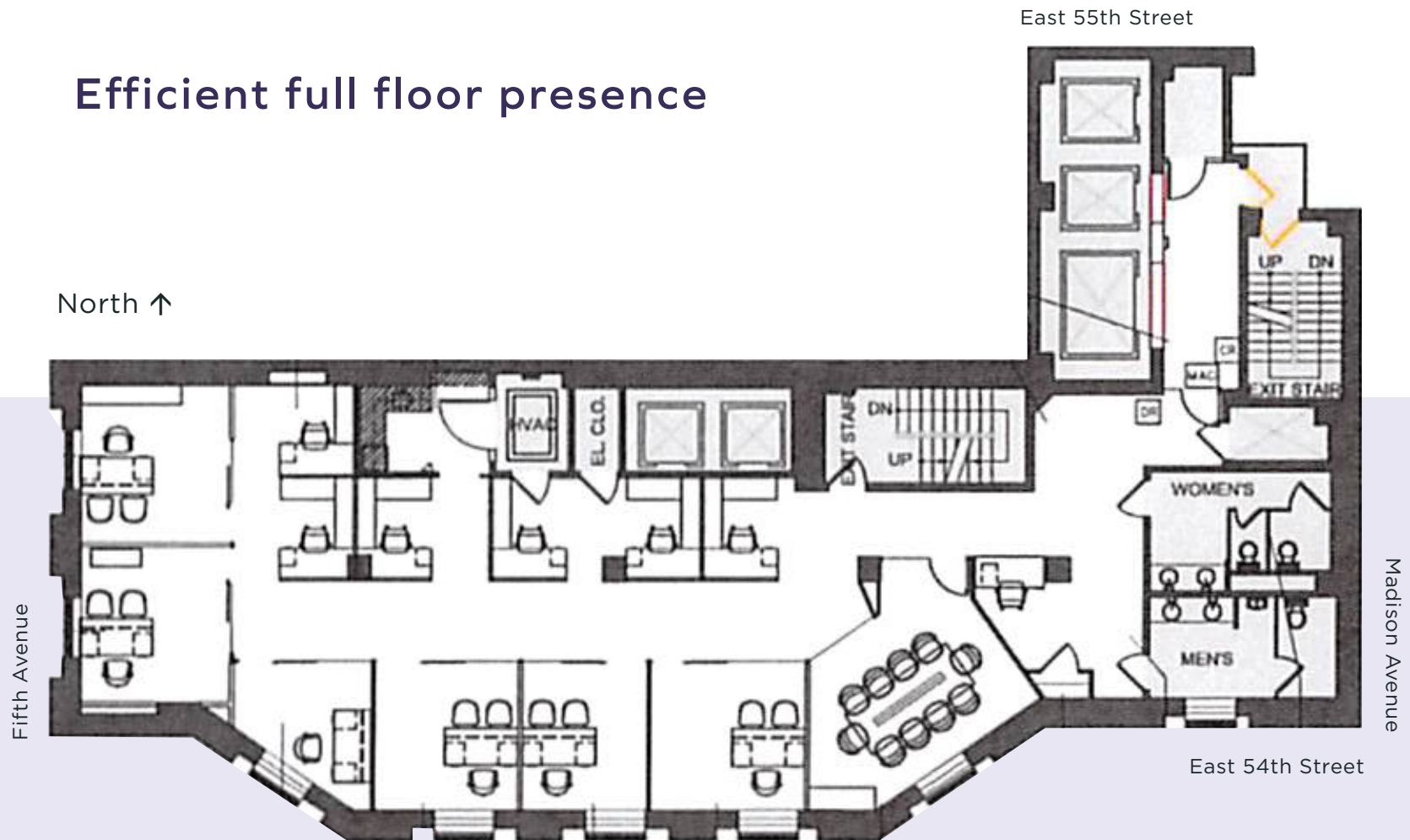
▼ 8-10 person conference room



◀ Pantry



## Efficient full floor presence



- Reception area
- Pantry
- 6 windowed glass fronted offices
- 8-10 person conference room
- Private bathrooms



FIFTH AVENUE