

60 East 42nd Street

ONE GRAND CENTRAL PLACE

ONE GRAND CENTRAL PLACE

- Direct in-Building access to Grand Central Terminal Railroad & Subway.
- Building Wide Recent Renovation.
- 24/7 Access
- HVAC
- Turnkey

60 EAST
42ND STREET

60

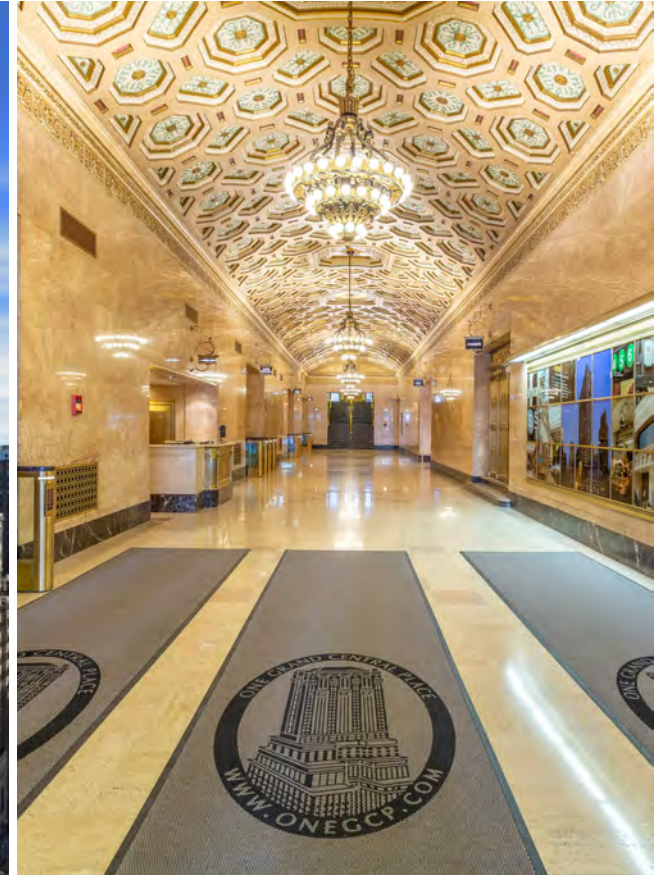
60 EAST
42ND STREET

ABOUT THE PROPERTY – Unit 2140– Sublease

60 East 42nd Street, NY, NY 10165 AKA **ONE GRAND CENTRAL PLACE**

| | |
|---------------------|---|
| Location | Between Madison Avenue & Park Avenue |
| Neighborhood | Grand Central |
| Partial | 21 floor |
| Size | 4,491 SF |
| Possession | Immediate |
| Term | to 6/30/2027 Fully built out and furnished |
| Taxes | \$9.65/SF |

Asking Rent \$55 PSF



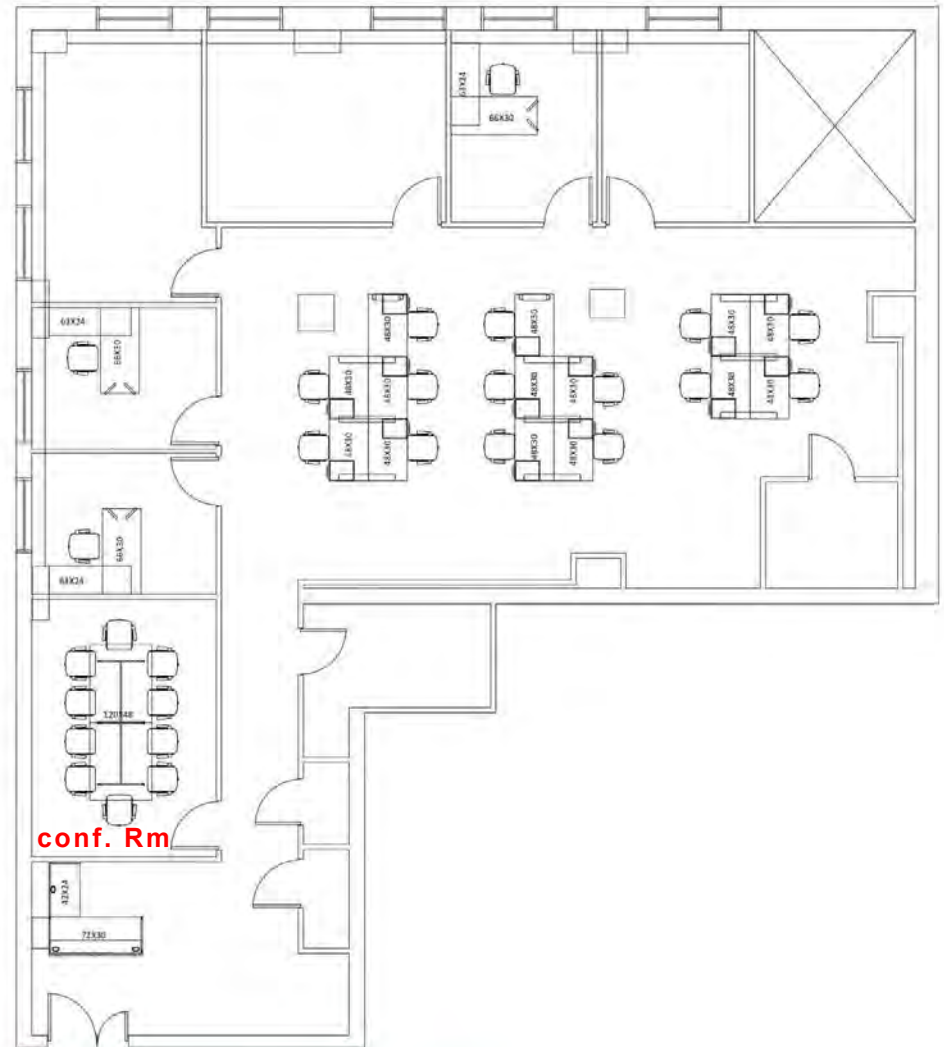
Recently Building Wide Renovation

ABOUT THE UNIT

– SUITE 2140, Sublet

Total 4,491 SF

- large reception area, pre-built
- 9 windows
- 10 person conference rooms
- Many storage spaces
- Open area for 15 workstations
- 6 private offices
- Kitchenette
- Pantry
- IT Closet, Coat Closet



Address: One Grand Central Place, 21 Floor

ABOUT THE UNIT

- SUITE 2140



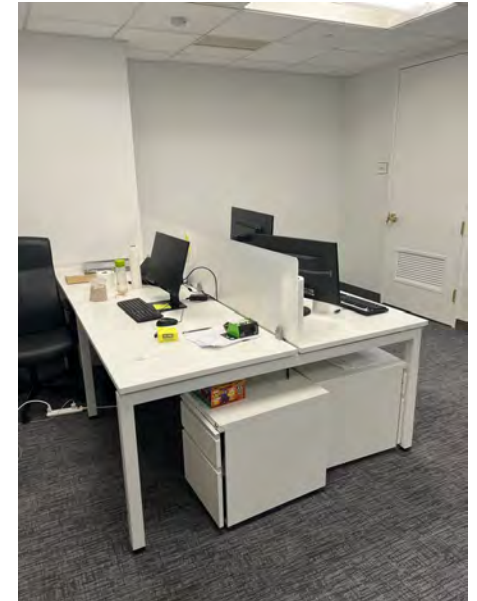
Reception



Kitchen



Private Office



Work Station

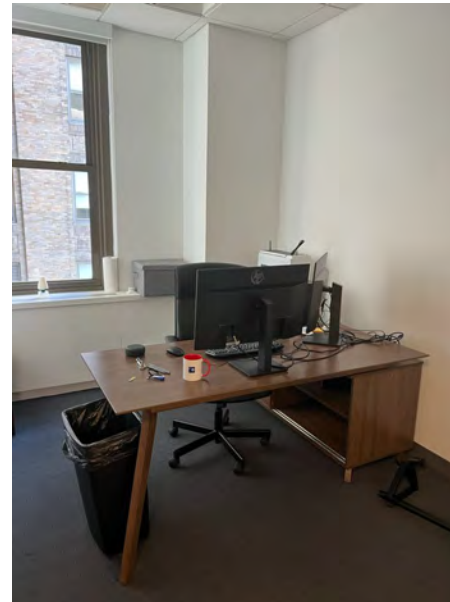
Conference Room



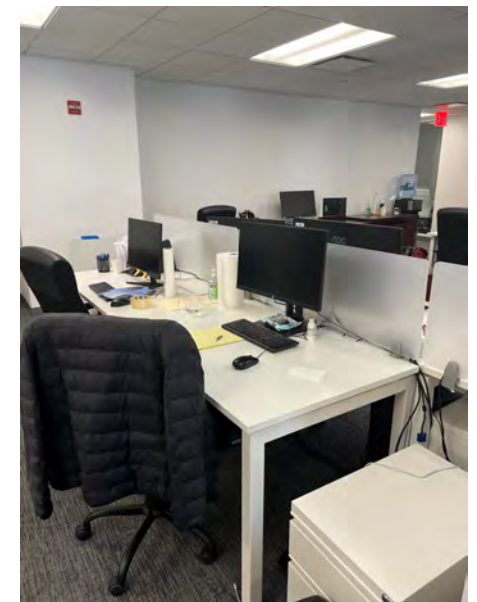
Kitchen



Private Office



Work Station



60 East 42nd Street / One Grand Central Place

Sublease

ONE GRAND CENTRAL PLACE

60 EAST
42ND STREET

60

60 EAST
42ND STREET