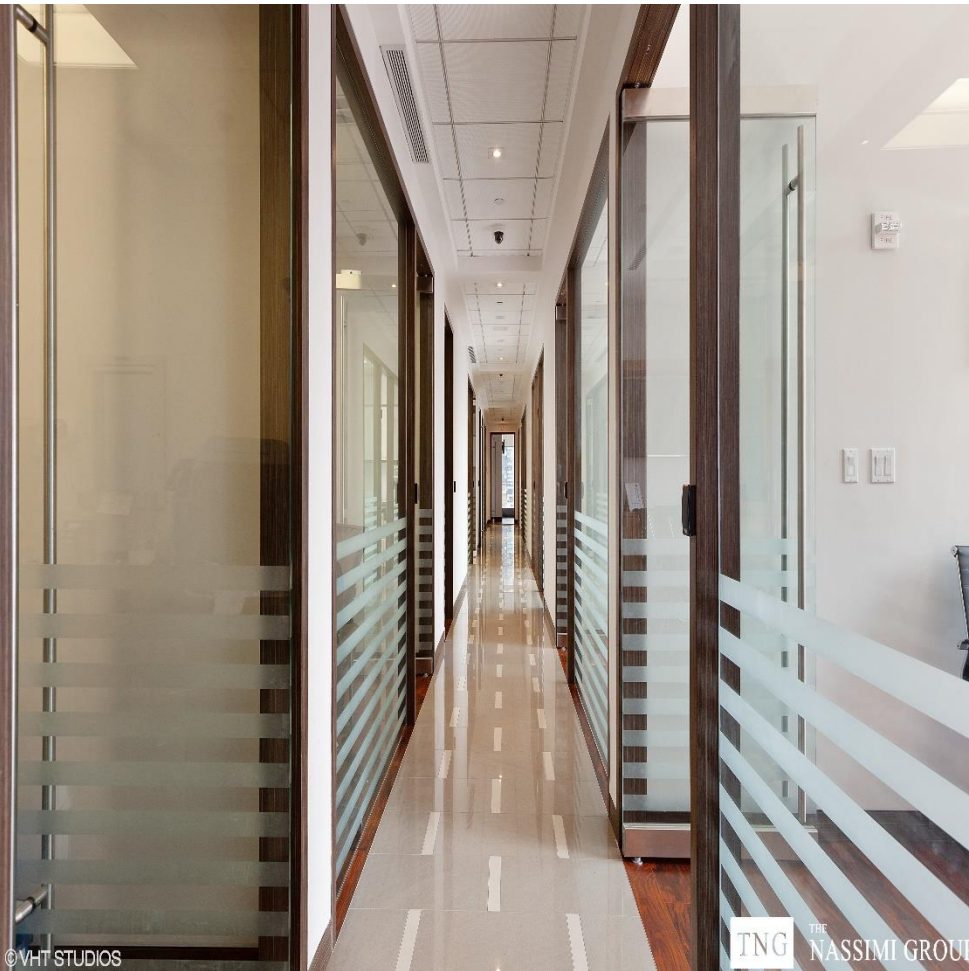


# Class A, Turn-Key Office Condominium For Lease - International Gem Tower

50 West 47th Street - New York, NY 10036

Prime Midtown location between Fifth and Sixth Avenues



## Unit Highlights

- Turn-Key office
- Luxury High-end finishes
- Unobstructed S/E/W views
- Double Corners Unit
- Fantastic natural light
- Floor-to-ceiling windows
- Ten private office rooms
- Full Kitchen
- Conference Room
- Reception Area
- Shipping Room
- Waiting Room
- Security Mantrap

**Approximate Size:** RSF 4,557

**Suite Number:** 1711

**Floor:** 17th

**Possession:** Immediate

**Term:** Negotiable

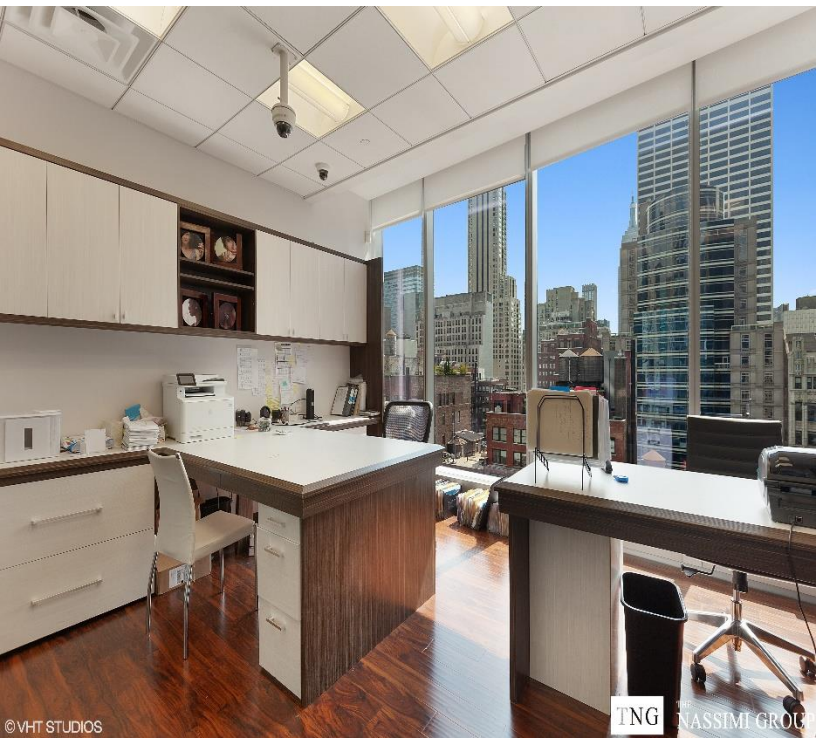
**Asking Price:** Upon Request

## Building Highlights

- State of the art vault facility
- Secure valet parking
- Ultra modern infrastructure
- Luxurious fitness center
- LEED certified
- Biometric access control
- G4S guarding services
- Closed-circuit monitoring



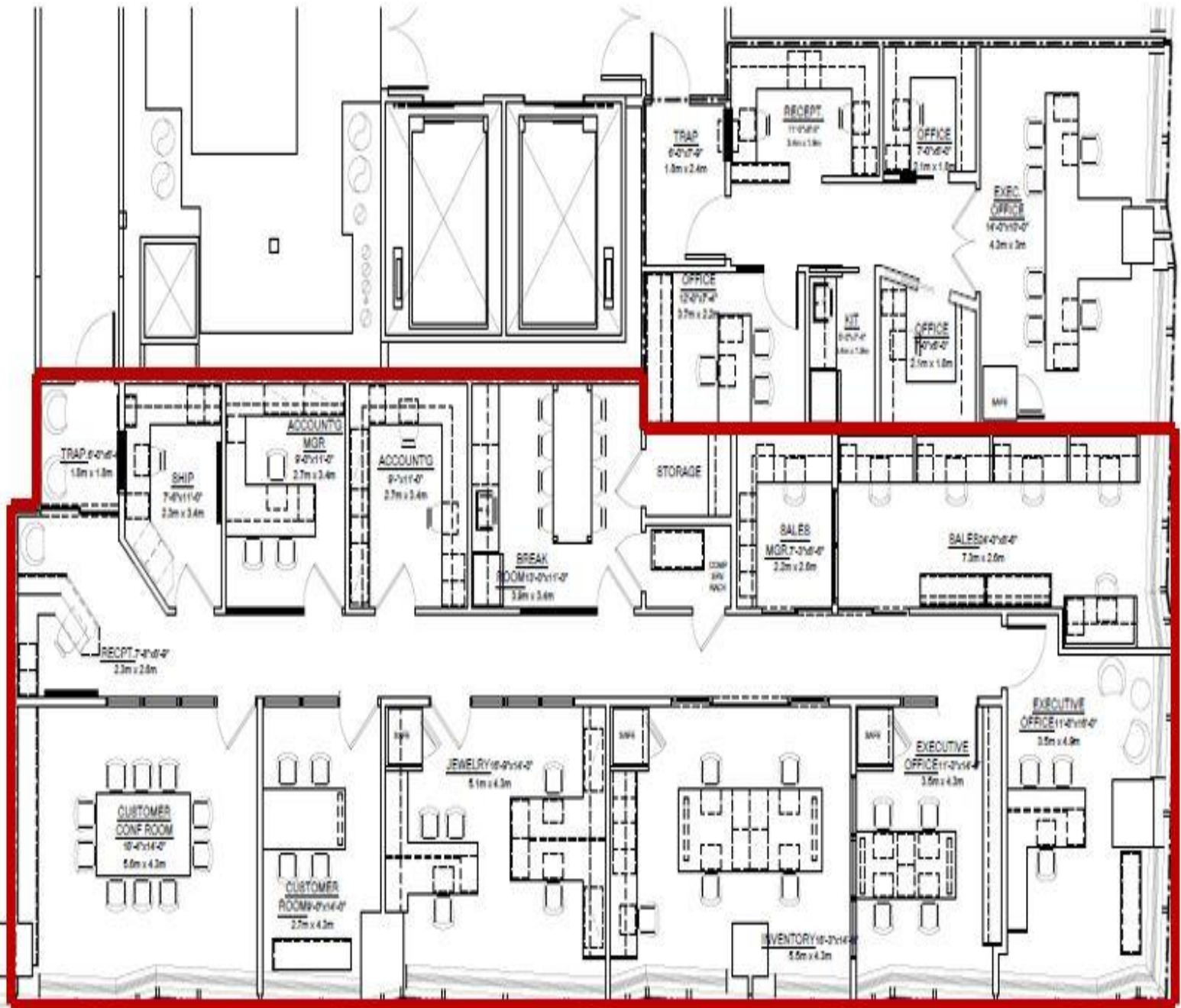
# Class A, Turn-Key Office Condominium For Lease - International Gem Tower 50 West 47th Street - New York, NY 10036 Prime Midtown location between Fifth and Sixth Avenues





**50 West 47th Street - New York, NY 10036**  
**Prime Midtown location between Fifth and Sixth Avenues**

## Prime Midtown location between Fifth and Sixth Avenues



# Class A, Turn-Key Office Condominium For Lease - International Gem Tower

50 West 47th Street - New York, NY 10036

Prime Midtown location between Fifth and Sixth Avenues

