

Unique office space at The Metropolitan Club



4,558 RSF available at **One East 60th Street** between Fifth & Madison

Space highlights

- One-of-a-kind office space located at the Metropolitan Club of New York
- 4 large windowed offices, 2 conference rooms/open area, reception and pantry
- High ceilings
- Great views of the historic interior courtyard
- Fantastic opportunity for a family office, private equity investor or non-profit organization
- Executive use of the Metropolitan Club amenities potentially available

Availability

Entire Ground Floor	1,825 RSF
Partial 2nd Floor with private entrance	2,733 RSF
Total (divisible)	4,558 RSF

Possession

Fall 2022

Term

Negotiable

Rate

Upon request

Nearby transportation

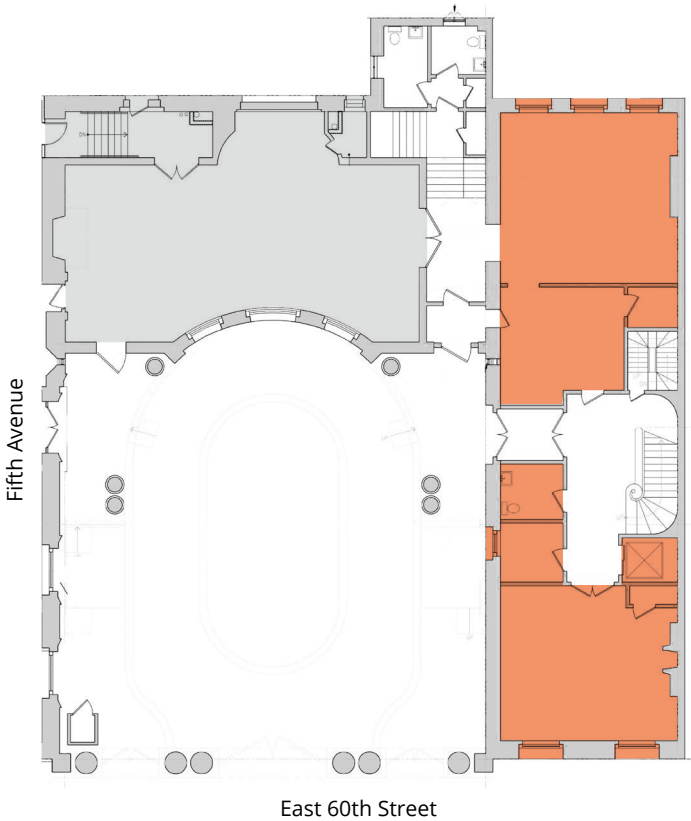
Located steps away from multiple subway stations which include access to the **4 5 6 F N Q R W** trains

Unique office space for lease

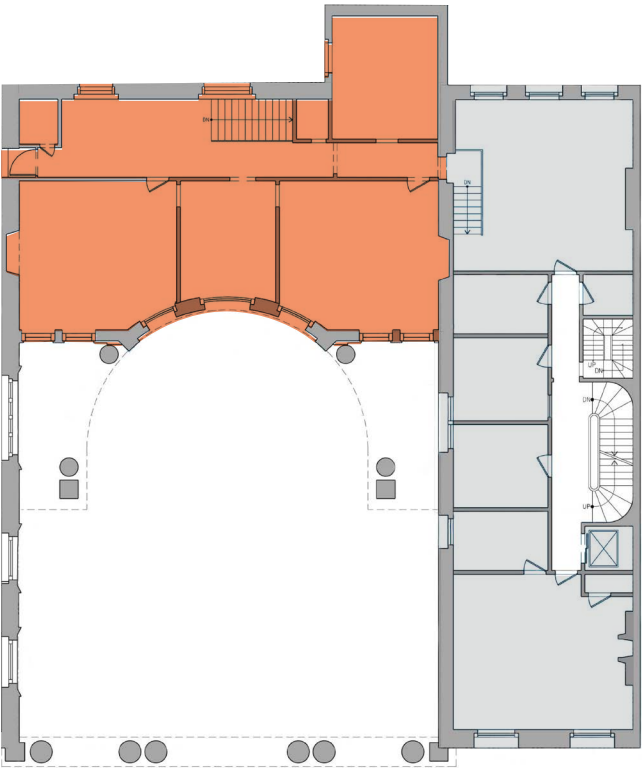
The Metropolitan Club | One East 60th Street
between Fifth and Madison Avenues

Floor plans

Entire Ground Floor | 1,825 RSF

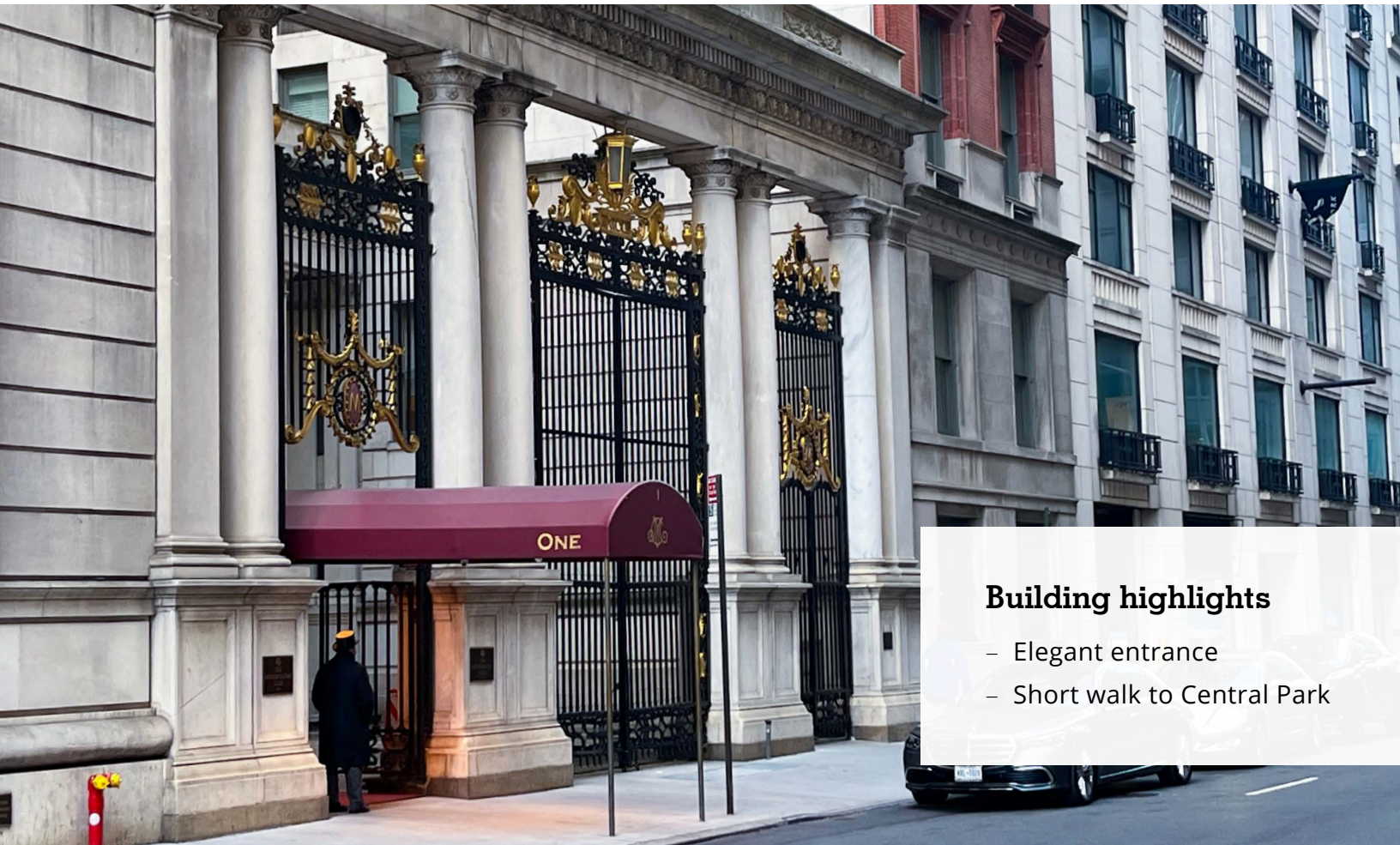


Partial 2nd Floor with private entrance | 2,733 RSF



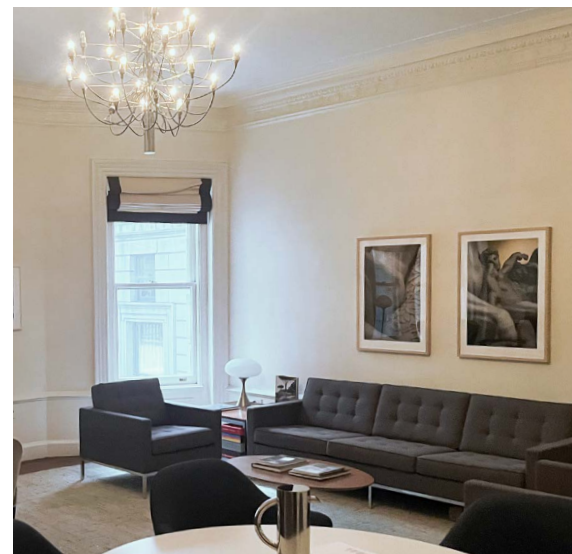
Unique office space for lease

The Metropolitan Club | One East 60th Street
between Fifth and Madison Avenues



Building highlights

- Elegant entrance
- Short walk to Central Park



Get more information: