

1 Rockefeller Center

Rockefeller Center

(Between 48th & 49th street)



Private Windowed Offices

Office Space Features

Enjoy the nicest views Rockefeller Center can offer of the Ice Skating Rink, Christmas Tree, and all of the activities available.

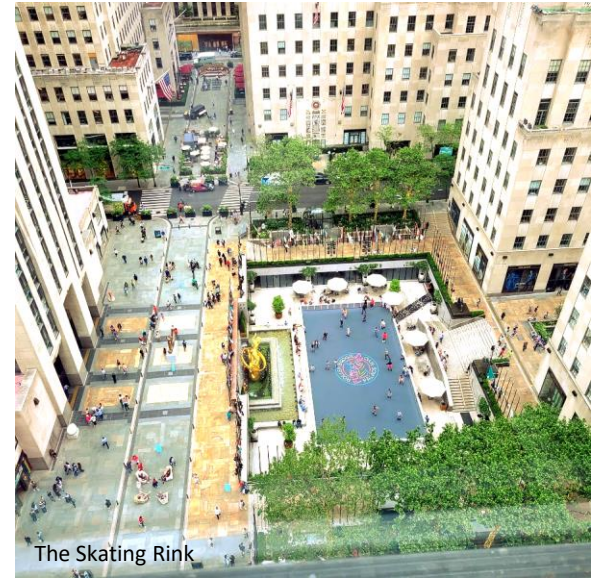
Square Footage: 4,966 SF.
Asking Rent: Upon Request
Term: March, 2025

- (8) Private Windowed Office
- (7) Workstations
- (1) Conference Room
- (1) Large Copy / File Room
- (1) Wet Pantry
- (1) Entrance Reception area with seating
- I.T. Closet
- Access to all Rockefeller Center Amenities

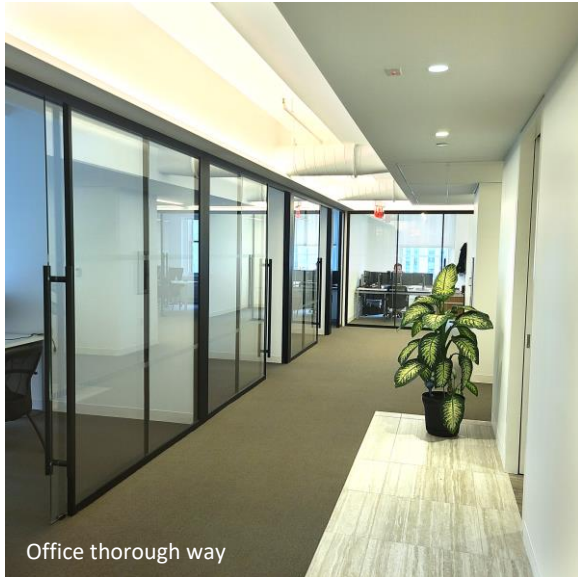
This office space offers a brand new built office installation. Excellent 2 + year sublet lease extension possible. Move in condition with furniture and telephones. This rental presents a great option for those who required a new professional space today.

Summary

Can accommodate a (15) to (17) person organization with (8) private windowed offices supported by a (7) person open work area, plus reception. Great space for a private business or a large company in need of a satellite office.



The Skating Rink



Office thorough way



Conference Room

1 Rockefeller Center

Rockefeller Center

(Between 48th & 49th street)



Highlights – Rooftop Park

One Rock Penthouse Amenity Center; Coffee Bar, Lounge, Outdoor Terraces.

- Newly Updated Attended Building Lobby
- 24/7 Building Access
- Offices are excellent for single person firms or satellite offices for larger companies.
- Building tenants include Law Firms, Technology companies, Entertainment, Publishing Financial services and Wealth Management + Hedge funds.

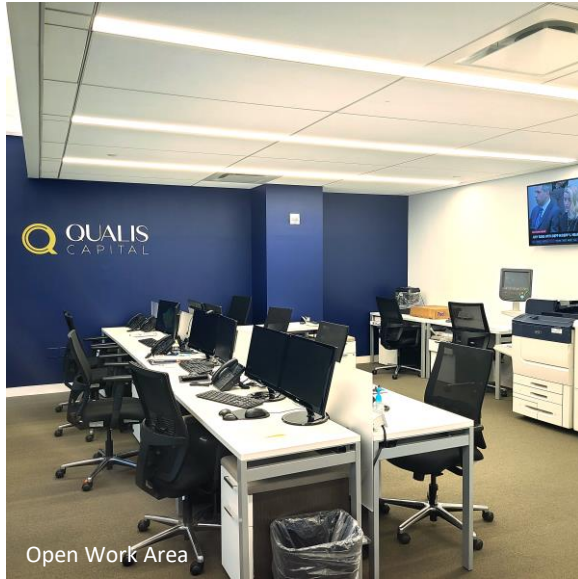
ZO. is Tishman Speyer's workplace amenity program that provides tenants and their employees with convenient services, community events, clubhouses, building updates and virtual programming. Company leaders can enjoy additional benefits with ZO. for Business, which covers a range of corporate needs including employee wellness, childcare programs, medical offerings and professional development.



1 Rockefeller Center

Rockefeller Center

(Between 48th & 49th street)



Open Work Area



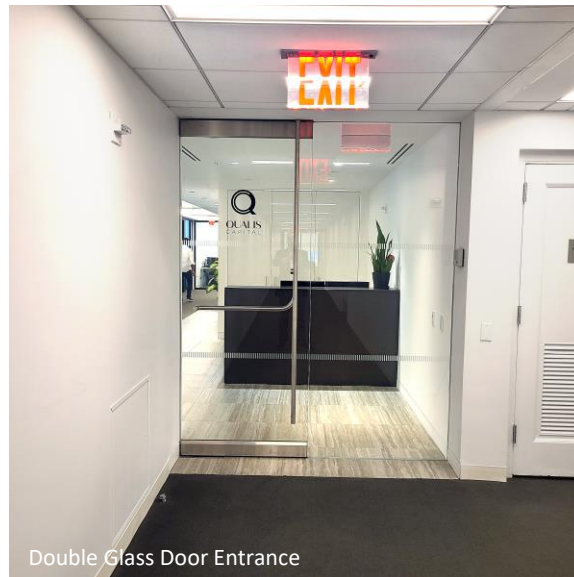
Chairman's Office



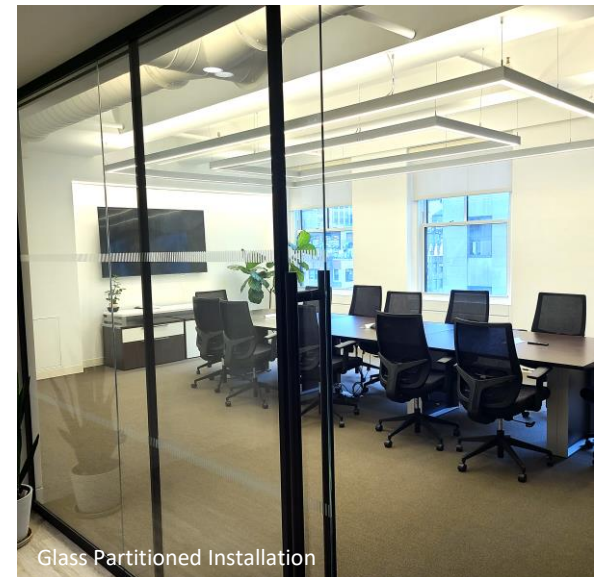
Conference Room



Private Windowed Office



Double Glass Door Entrance

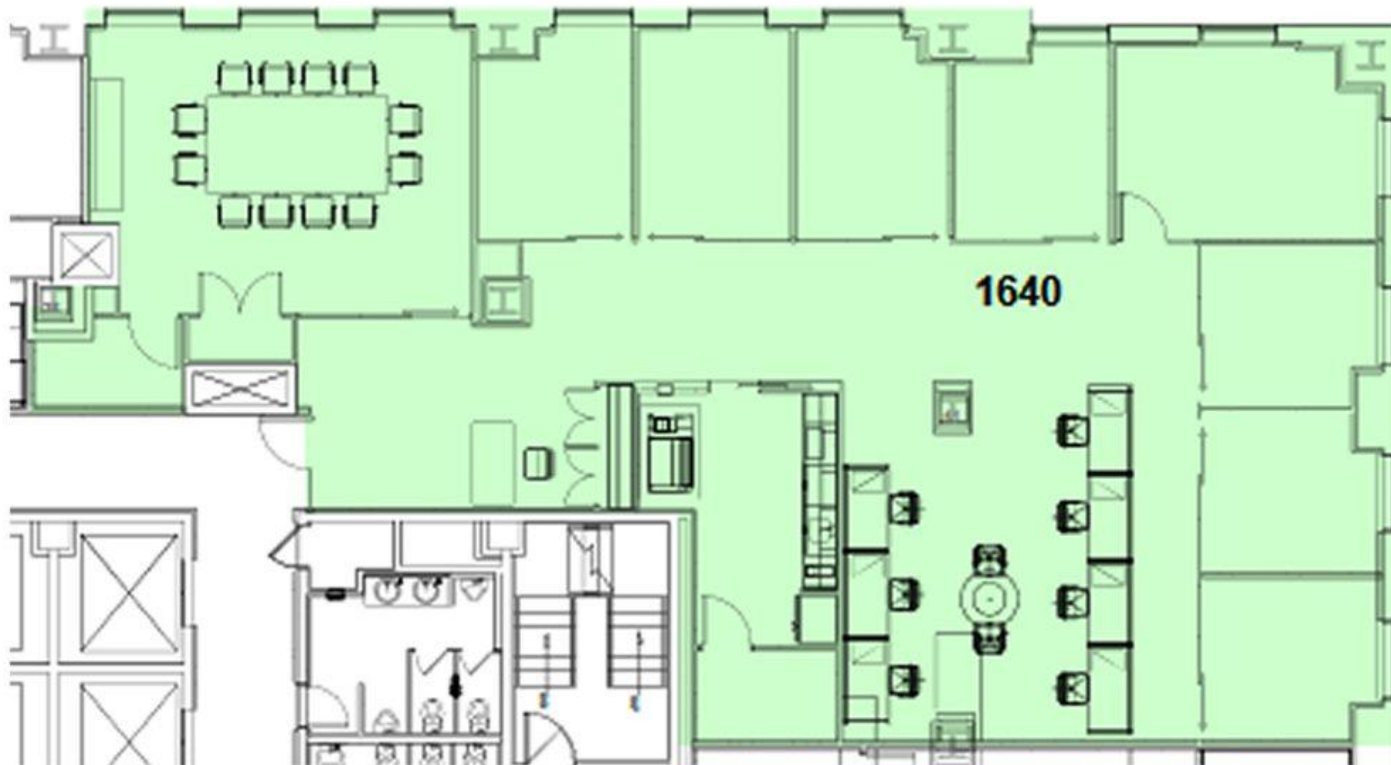


Glass Partitioned Installation

1 Rockefeller Center

Rockefeller Center

(Between 48th & 49th street)



1 Rockefeller Center

Rockefeller Center

(Between 48th & 49th street)

