

# 90

B R O A D  
S T R E E T



## PREMISES

Partial 11th Floor | 4,977 RSF

## POSSESSION

Immediate

## TERM

5-10 Years

## COMMENTS

- Contemporary finished space
- Glass fronted offices and meeting rooms
- Modern pantry
- Exposed columns finished with intumescent paint
- Polished concrete floors
- Excellent southern exposure
- Brand new corridor
- Immediate vicinity of Stone Street



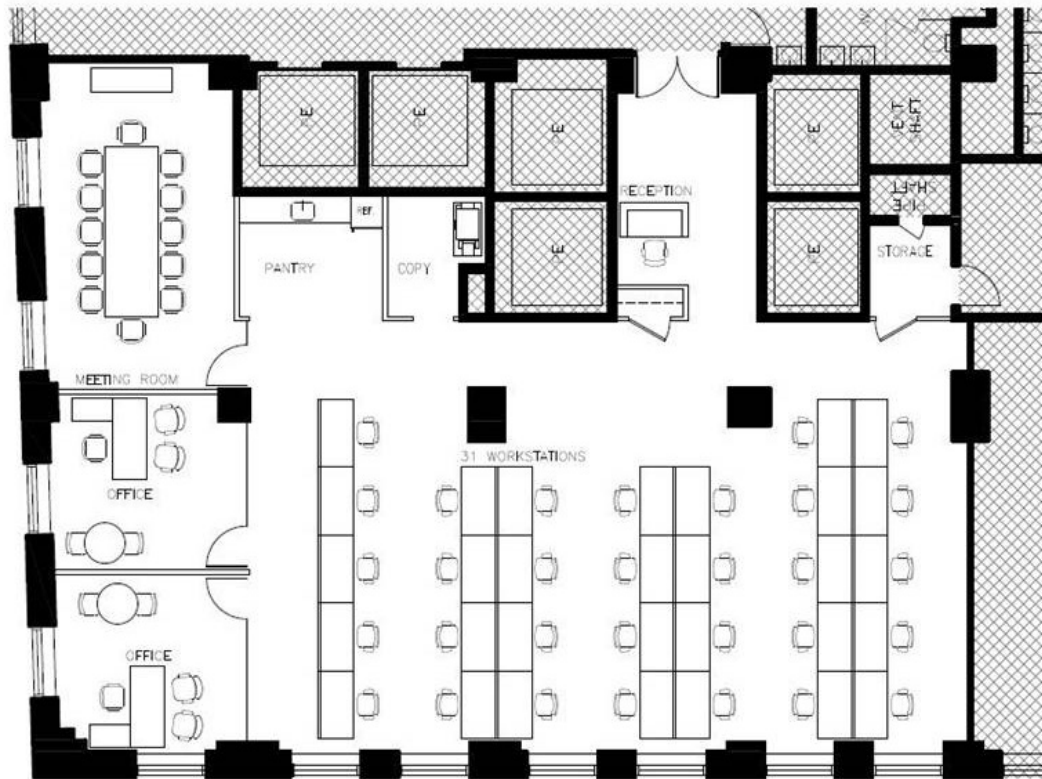
# INTERIOR





# FLOOR PLAN

Partial 11th Floor - 4,977 RSF





# 90

B R O A D  
S T R E E T

