

36  
East  
20<sup>th</sup> Street  
Park  
Avenue  
South







Current availabilities  
**Entire 4th, 5th & 7th floors**

Size  
**Each floor 4,125 rsf**

Possession  
**Arranged**

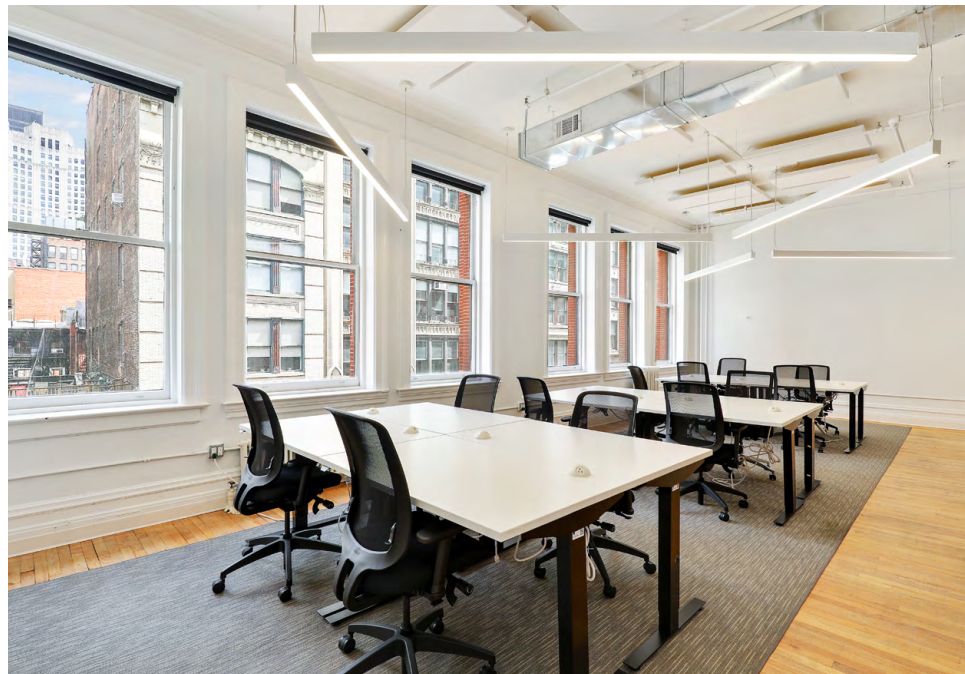
Ceiling heights  
**Ranges from 12'-16'**

Term  
**5-7 years**

Rate  
**Upon request**

#### Space descriptions

- **Furnished and move-in ready pre-builts**
- **12'-16' ceilings with oversized windows allowing an abundance of natural light**
- **Eat-in pantries with stainless steel appliances**
- **Glass office and conference room fronts**



#### Building description

- **Boutique building situated right off of Park Avenue South**
- **New restrooms**
- **Located on restaurant row, surrounded by restaurants such as Gramercy Tavern, Sugarfish, Il Mulino Prime and the newly opened, Sona, at the base of the building**

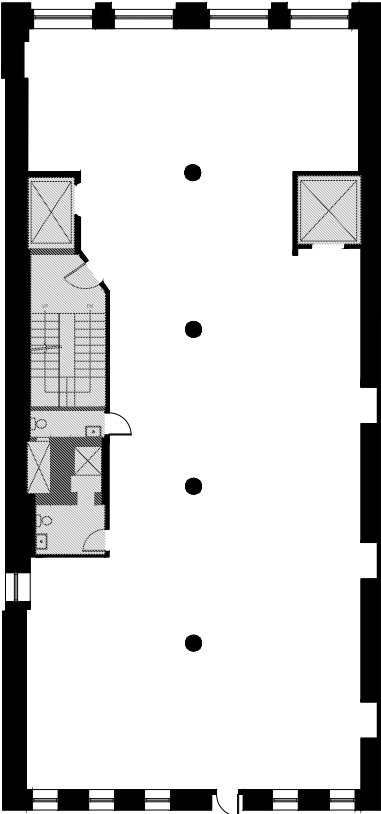
#### Nearby transportation

**4 5 6 L N Q R W**



Core & shell plan

20th Street



Existing conditions example

20th Street

