



62W
45TH

TAKE A
VIRTUAL TOUR

SOHO LOFTS IN MIDTOWN



PREMISES

Entire 2nd - **4,650 RSF**

Entire 3rd - **4,650 RSF**

Entire 4th - **4,650 RSF**

RENT

Withheld

TERM

Negotiable

TYPE

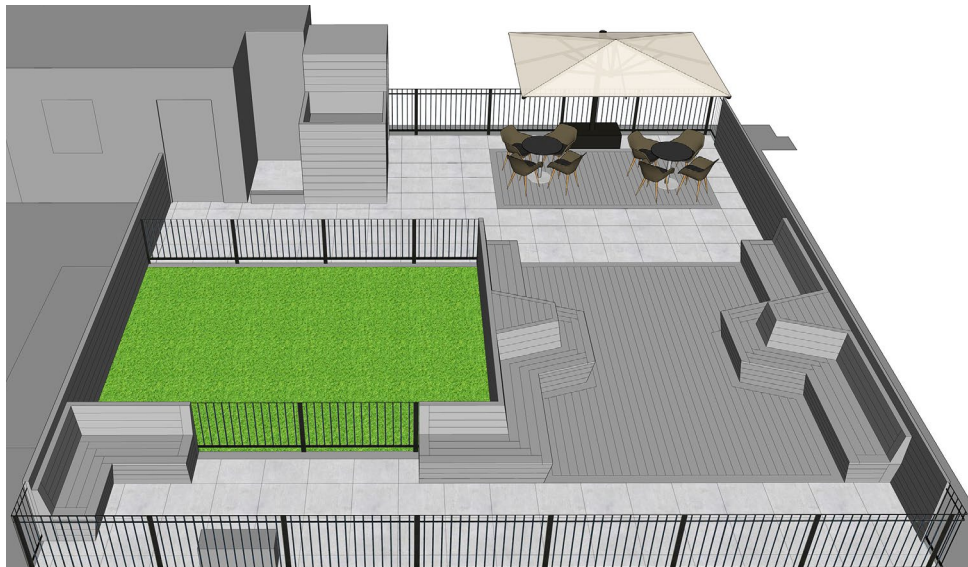
Direct

OCCUPANCY

Vacant

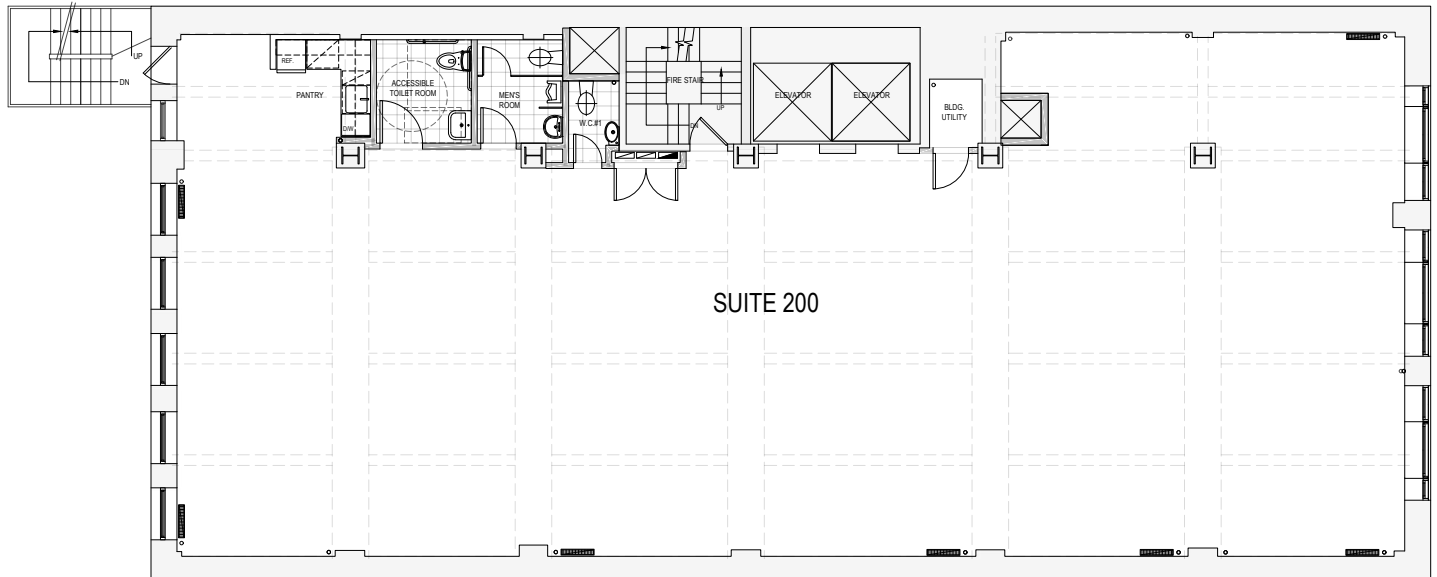


ROOF DECK RENDERINGS



ENTIRE 2ND FLOOR

4,650 SF

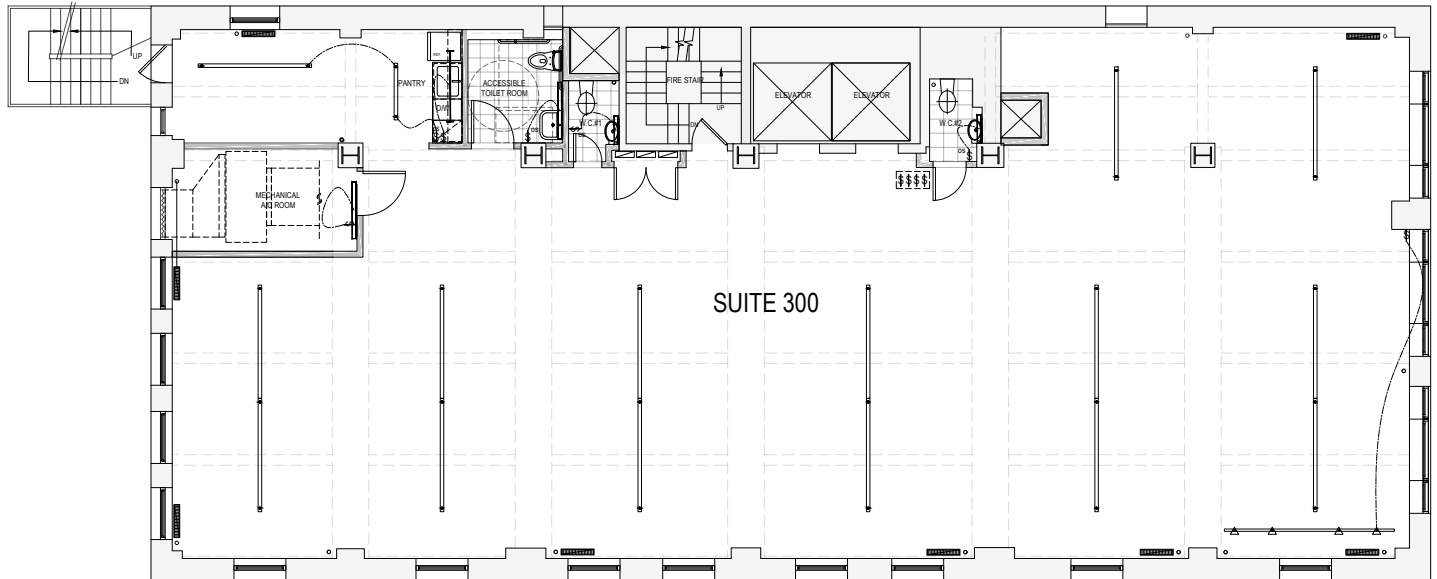


COMMENTS

- Full floor, loft style, luxury office space.
- High, plaster ceilings with tongue-and-groove wood floors.
- Exposed brick.
- Monumental sized windows showcasing park views.
- Modern, all white pantry with stainless steel appliances.
- Luxurious, private restroom facilities on each floor.
- Roof deck for safe outdoor gatherings.
- Key fob tenant-controlled security.

ENTIRE 3RD FLOOR

4,650 SF

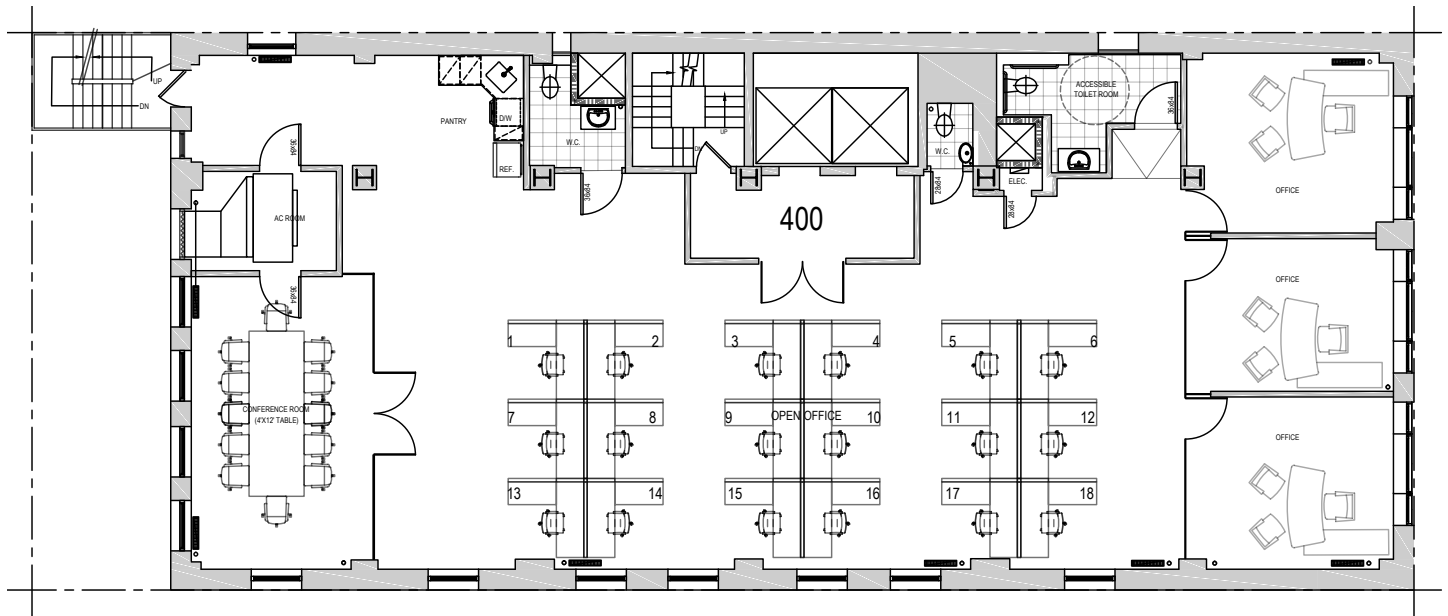


COMMENTS

- Full floor, loft style, luxury office space.
- High, plaster ceilings with tongue-and-groove wood floors.
- Exposed brick.
- Monumental sized windows showcasing park views.
- Modern, all white pantry with stainless steel appliances.
- Luxurious, private restroom facilities on each floor.
- Roof deck for safe outdoor gatherings.
- Key fob tenant-controlled security.

ENTIRE 4TH FLOOR

4,650 SF



COMMENTS

- Full floor, loft style, luxury office space.
- High, plaster ceilings with tongue-and-groove wood floors.
- Exposed brick.
- Monumental sized windows showcasing park views.
- Modern, all white pantry with stainless steel appliances.
- Luxurious, private restroom facilities on each floor.
- Roof deck for safe outdoor gatherings.
- Key fob tenant-controlled security.

62W
45TH



★ PRET A MANGER ★