

# 1270

## AA

PARTIAL 17<sup>TH</sup>  
4,806 RSF

### POSSESSION

Immediate

### TERM

8/30/2025

### DETAILS

- » Partial floor availability with strong elevator presence
- » Built in Excellent condition with new furniture included
- » The space features 8 windowed offices, 1 conference room, pantry and 6 cubicles
- » Corner unit with Central Park Views

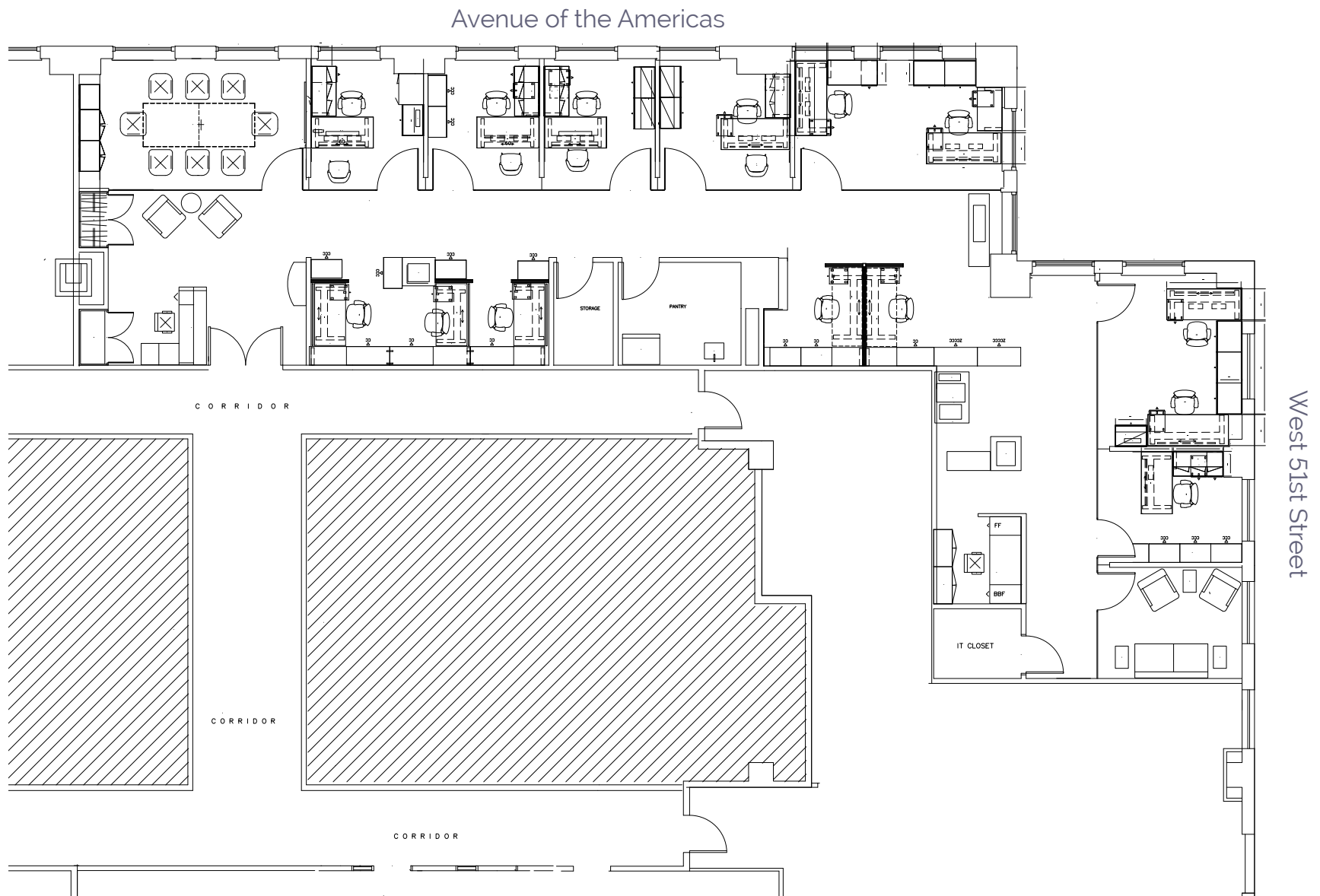




PARTIAL 17<sup>TH</sup> INTERIOR  
& ELEVATOR LOBBY



PARTIAL 17<sup>TH</sup>  
4,806 RSF



1270  
A°A

