



Conference Room



Glass-front Offices

Heart of Grand Central Sublease Opportunity Full Floor Identity

424 Madison Avenue

Located on the Southwest Corner of East 49th Street



ENTIRE 7TH FLOOR: EXISTING CONDITIONS



Windowed Offices

Entire 7th Floor: 4,948 rsf

Rent: Please call or email

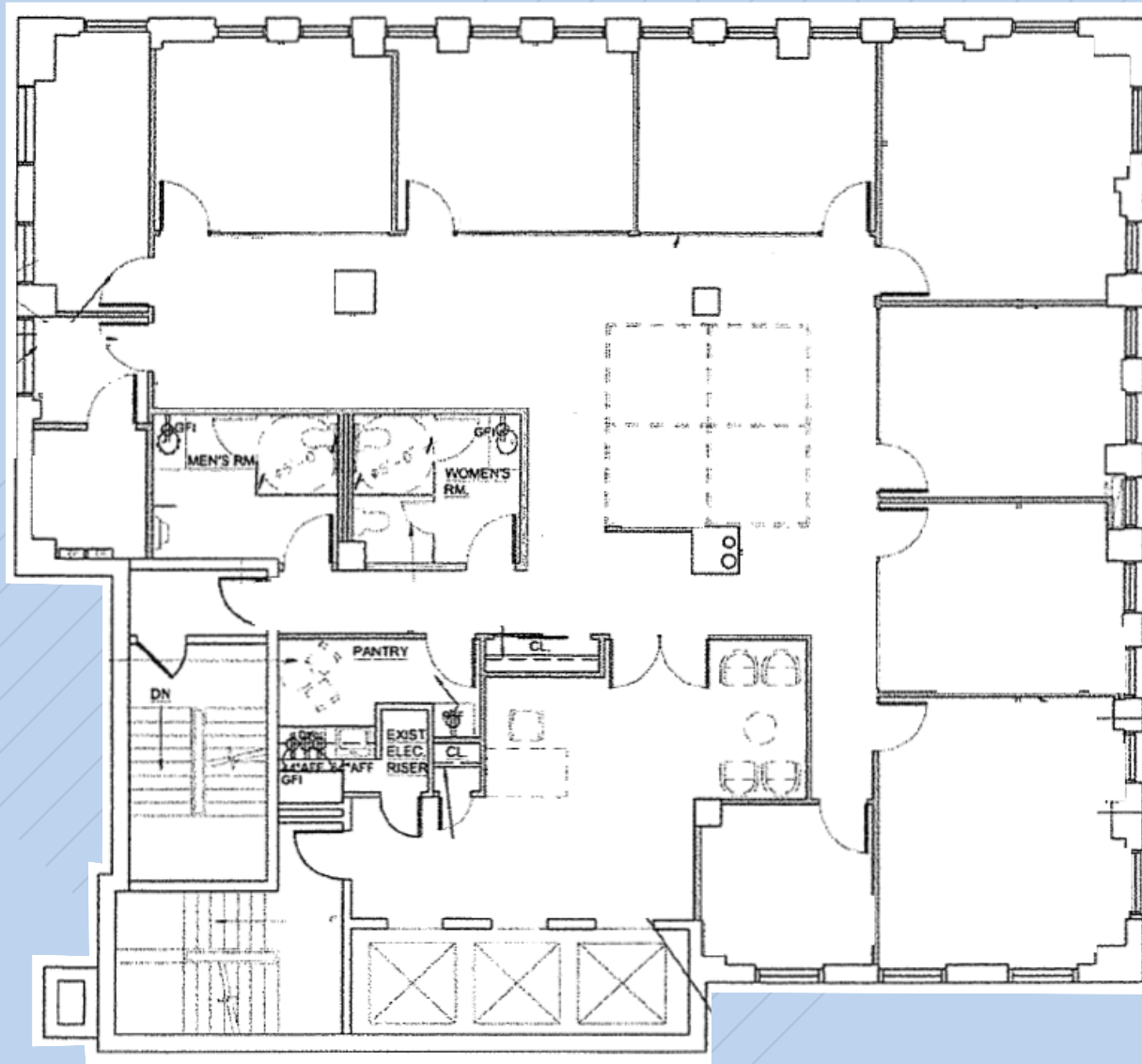
Possession: Immediate

Sublease Term: Through Dec. 31, 2021 (direct extension possible)

- Existing buildout with (1) Conference room, (7) glass-fronted offices, wet pantry, reception area, and small workstation area - Furniture can be made available
- Centrally located between Rockefeller Center **B D F M** subway lines, **6** subway at Lexington Ave/51st St, **E M** at 5th Ave/53rd St; and vicinity to Grand Central Terminal's **7 4 5 6 S** trains and Metro-North

ENTIRE 7TH FLOOR: 4,948 RSF

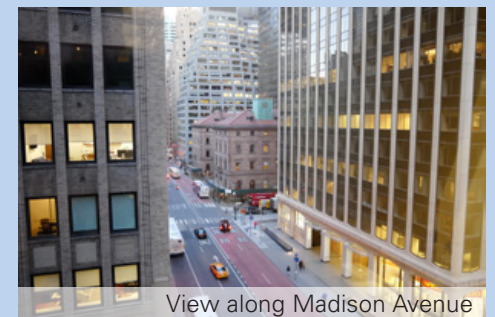
EAST 49TH STREET



MADISON AVENUE



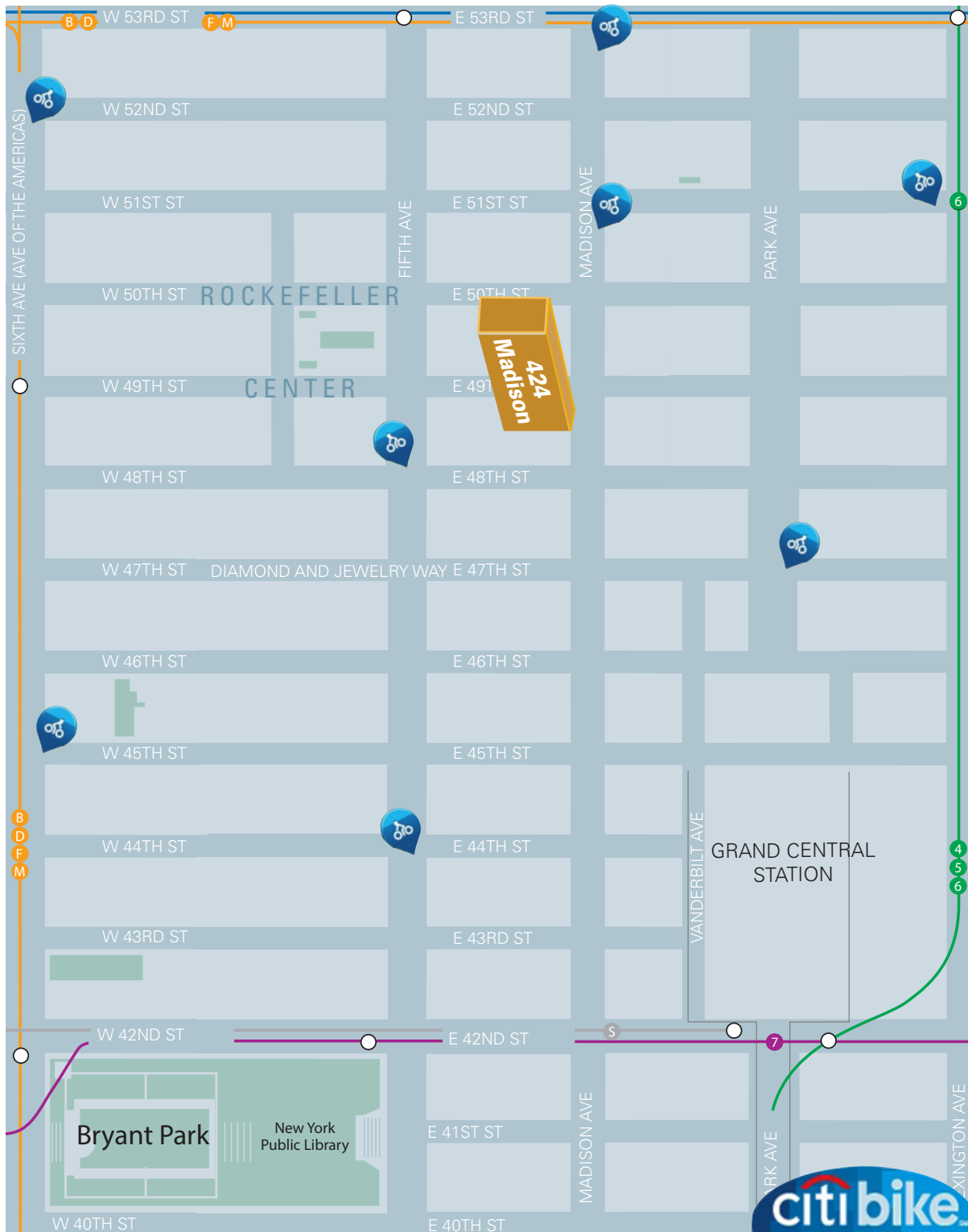
Glass-Front Offices



View along Madison Avenue

ENTIRE 7TH FLOOR: EXISTING CONDITIONS





Grand Central Terminal



Rockefeller Center