

Current Conditions - View Towards West 37th Street

# 9 East 37th Street

Between 5th & Madison Avenues

Furnished Plug'n Play Floor | 5,000 RSF  
Convenient to the Midtown Area's Variety of  
Transportation, Restaurants, Retail & Services

Short walk to Grand Central Terminal, Herald Square, Bryant  
Park **B D F M 4 5 6 7 N Q R W S** subway lines and **MTA** Metro-North Railroad

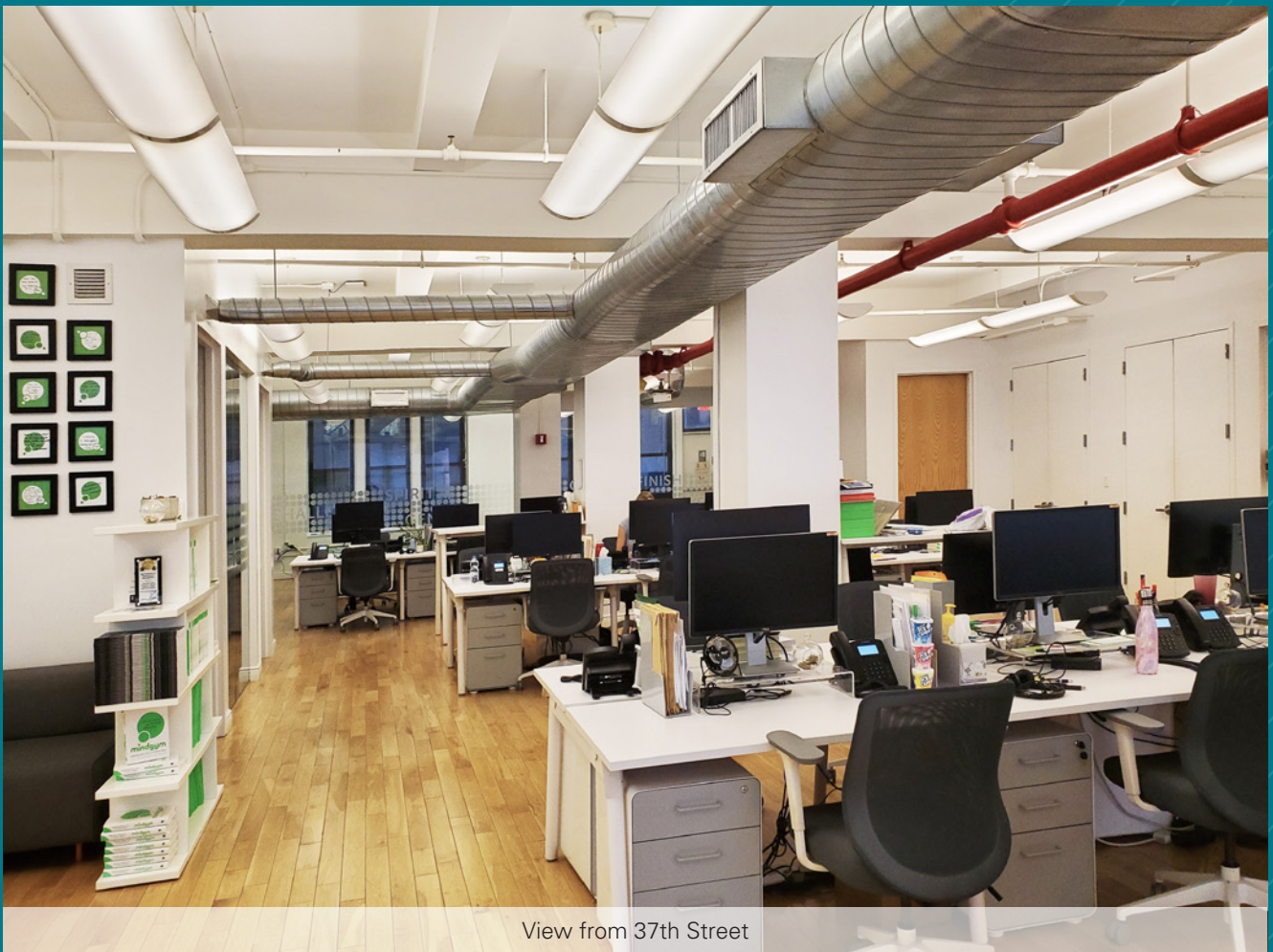


Entire 6th Fl: 5,000 rsf  
Possession: May 1, 2023  
Rent: Call or email for details

At 54 feet, the floors at 9 East 37th Street are slightly wider than other buildings of similar size, allowing for a much more expansive feel; better office flow; longer window lines; and a brighter environment with views of The Empire State building.

**Comments:**

- Furnished Plug'n Play space with hardwood floors throughout, exposed ceilings, and good south views
- Large open area for 50+ people, (1) large glass-front conference room, (2) glass-front meeting/offices
- Phone room or extra small meeting room; large wet pantry with seating area
- Attended lobby with (2) passenger elevators plus (1) freight elevator, submetered electric
- Convenient Midtown location offering fantastic transportation access within walking distance to Grand Central Terminal, Herald Square, Bryant Park 7 N Q R W S B D F M 4 5 6 subway lines and proximity to Penn Station 1 2 3 A C E subways and MTA Long Island Rail Road



View from 37th Street



Small Meeting Rooms or Offices



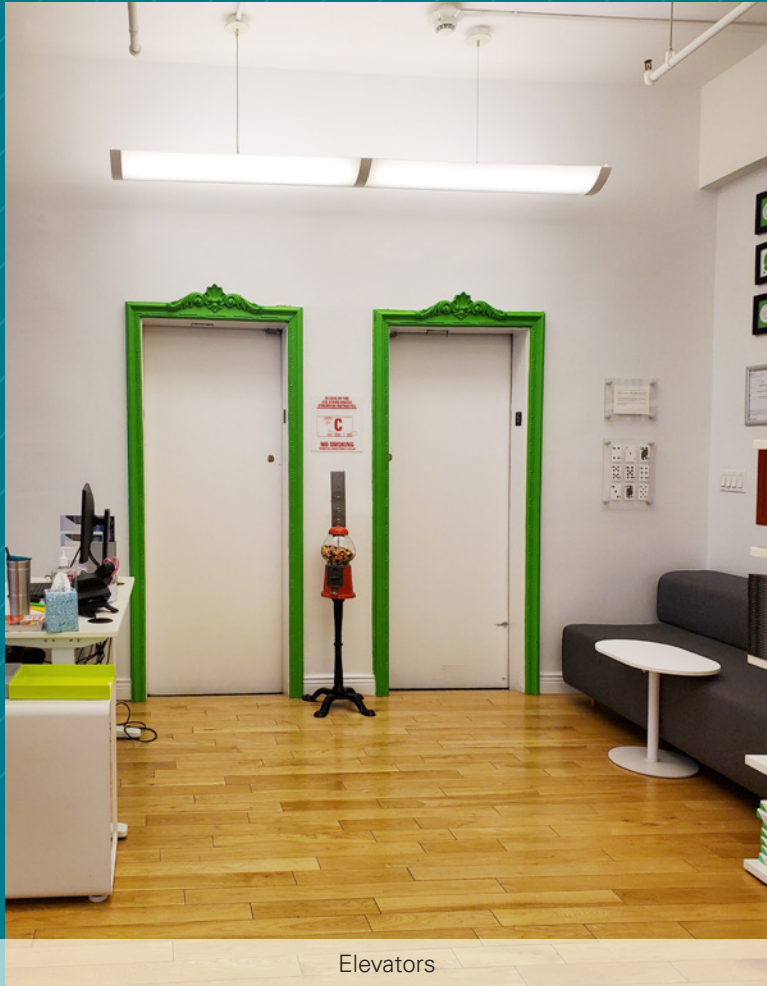
Large Conference Room



Kitchen

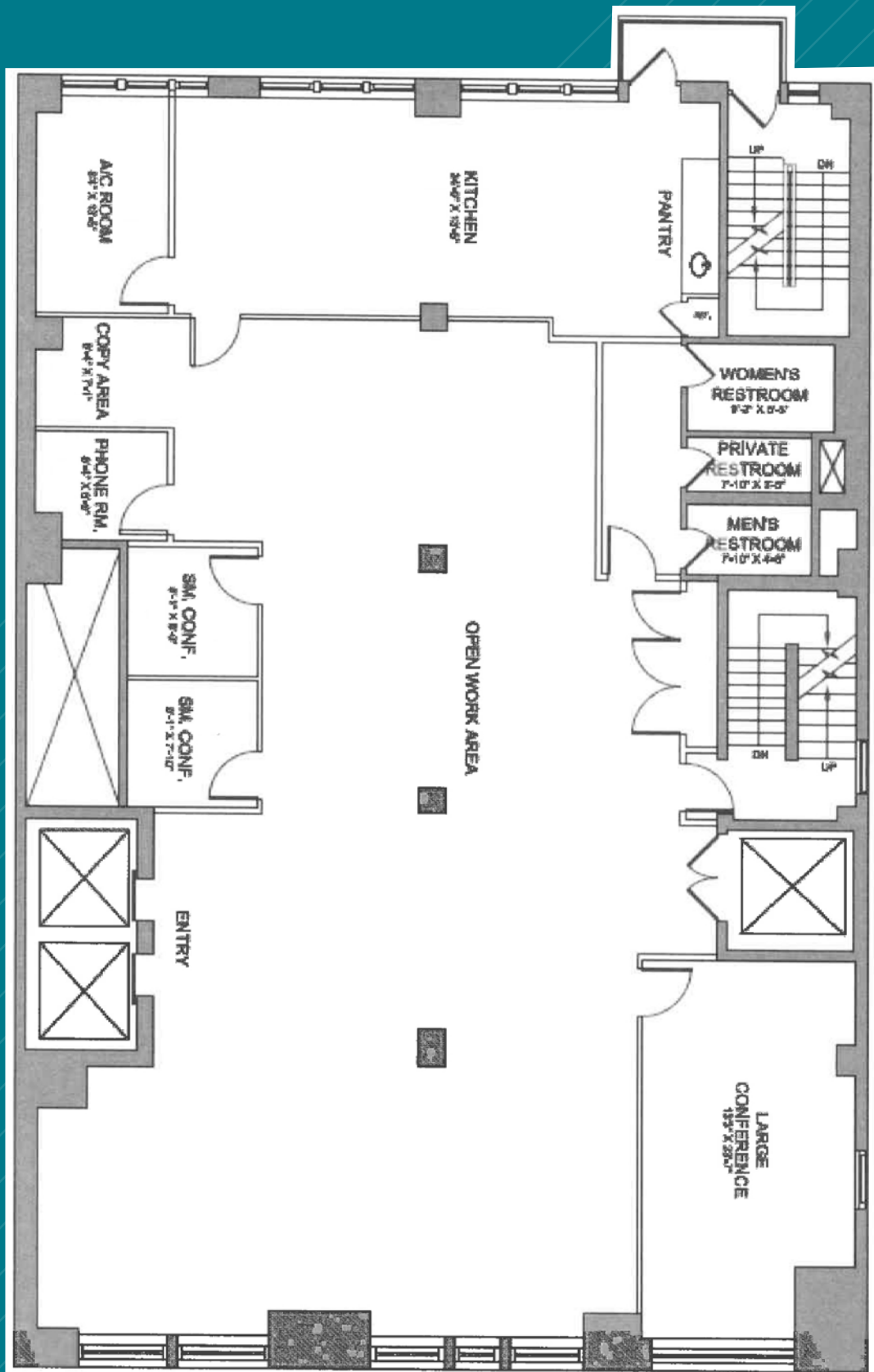


Phone Room or Extra Small Meeting Room



Elevators

ENTIRE 6TH FLOOR - 5,000 RSF  
(EXISTING CONDITIONS)



EAST 37TH STREET

(for descriptive purposes only; not to scale.)

