

# BOUTIQUE SUBLEASE OPPORTUNITY IN PRIME PARK AVENUE BUILDING



## Space Profile

Floor(s): **Partial 7th**  
**Sublease B - 5,059 RSF**

Rate: **Inquire for details**  
Availability: **January 2023**  
Term: **2-5 Years**

## Key Highlights

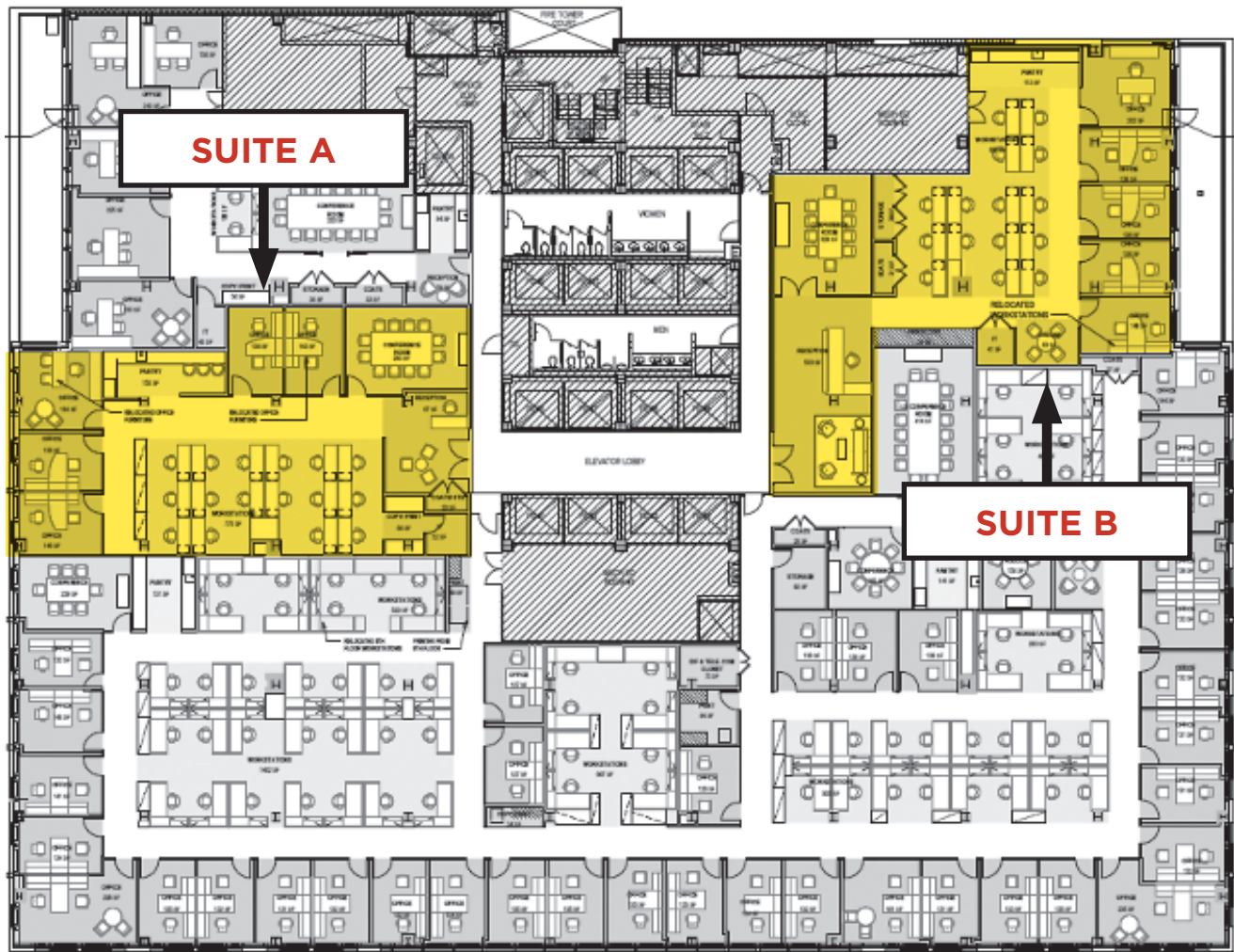
- Premier owner occupied Park Avenue Building
- Pre-built spaces directly off elevator with high visible signage
- Unparalleled amenity floor featuring gourmet food, conference center, lounge space, and outdoor terrace
- Newly renovated lobby



**SUBLEASE** 16th Floor Amenity Center Select Photos







**7th Floor Suite B: 5,059 RSF**

Prebuilt under construction to feature

- 4** offices
- 1** meeting room
- 1** conference room
- 1** open area for trading
- 1** pantry