

# 1700 BROADWAY



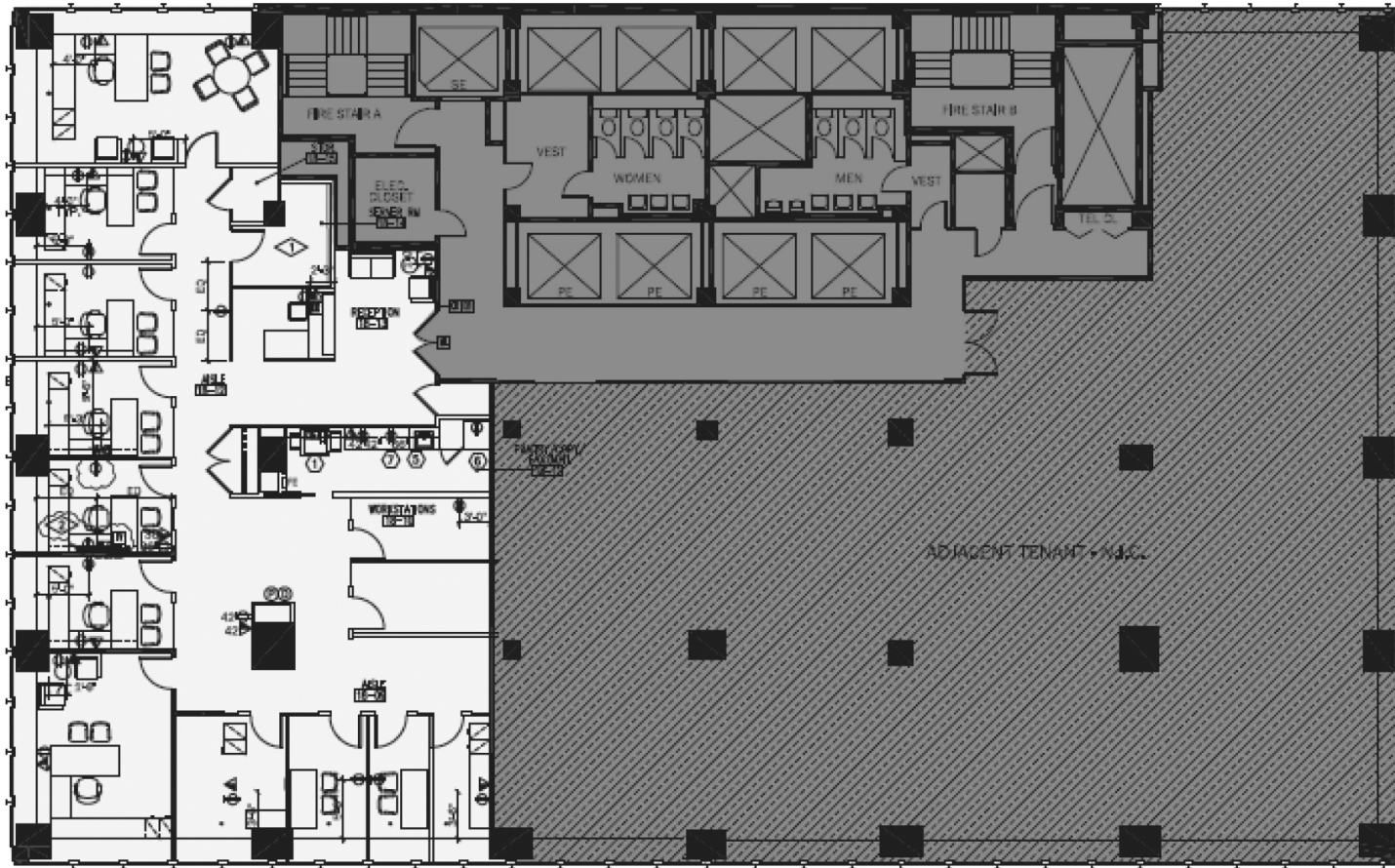


# SPACE FEATURES

PARTIAL 18<sup>TH</sup> FLOOR - 5,124 SF

- Direct elevator presence
- Broadway & 54<sup>th</sup> Street exposures
- Fully furnished, wired, plug and play installations

**12** Offices | **1** Conference Room



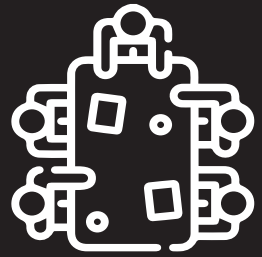
BROADWAY





# BUILDING FEATURES

- New lobby
- New elevators, featuring destination dispatch
- Full service on-site parking garage
- Extended base building HVAC: 8:00 AM through 6:00 PM Monday - Friday and 9:00 AM - 1:00 PM Saturday
- Stunning tenant amenity center, 1700 Broadway Club, featuring:



Conference Center / Meeting Rooms



Tenant Lounge



2,000 SF Terrace



Quiet Workspaces



Bar



Fitness Studio

# 1700 BROADWAY CLUB





**EXCLUSIVE 2,000 SF TERRACE**



## TRANSPORTATION & AMENITY MAP

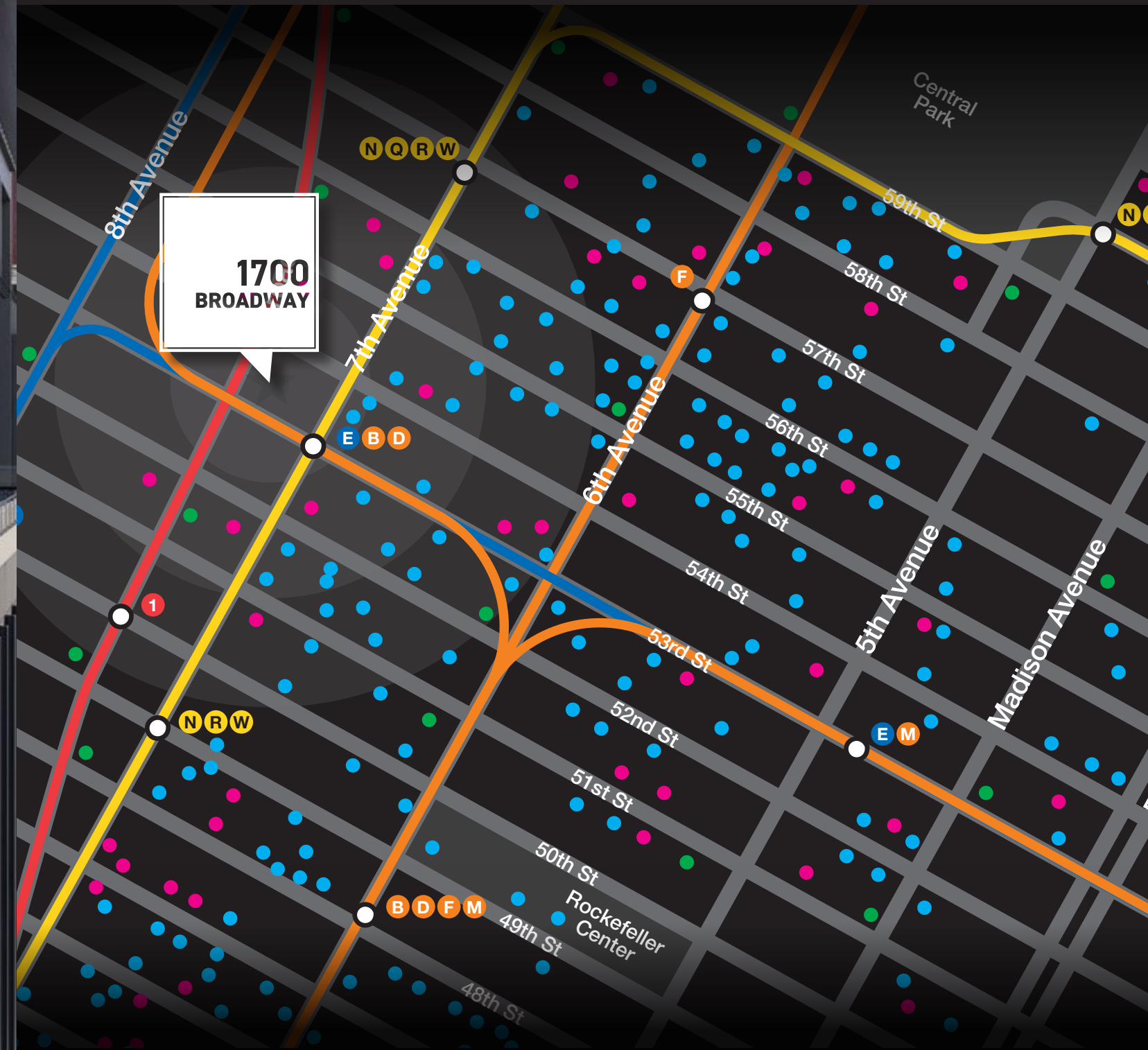


**9 Mins** to Penn Station

**7 Mins** to Port Authority

**13 Mins** to Grand Central

**5 Blocks** to Central Park



**KEY**

● RESTAURANTS

● HOTELS

● CITI BIKE