

Office space for lease Flexible/short term

18 EAST 41ST STREET

Between Fifth & Madison Avenues

Partial Floor Availabilities: 632-3,082 SF
Entire Floor Availabilities: 5,200 SF



Address	18 East 41st Street
Between	Fifth & Madison Avenues
Available Space	632 - 5,200 RSF
Asking Rent	Upon Request
Conditions	Built
Term	3 to 10 Years

Property Highlights:

- Major Capital Improvements Underway
- New Windows
- 24/7 Building Access
- Close Proximity to Grand Central & Bryant Park

Transportation

D, B, F, M, E, S, 4, 5, 6, 7 & (Metro North and Amtrak)



FOR LEASE

18 EAST 41ST STREET

13TH FLOOR

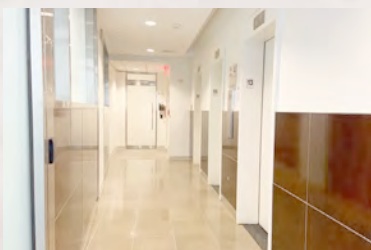
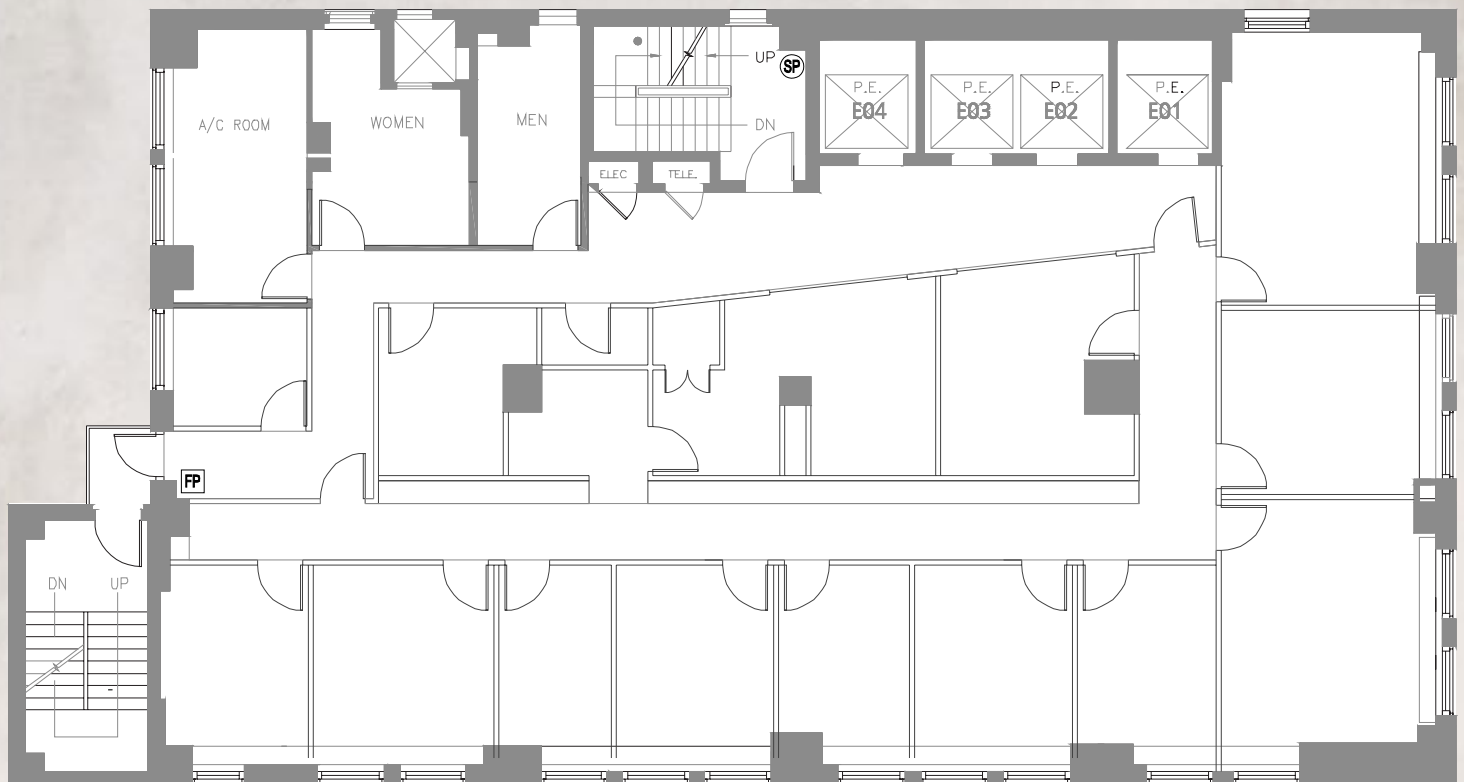
18 EAST 41ST STREET

BETWEEN FIFTH & MADISON AVENUES

13TH | ENTIRE | 5,200 RSF

SPACE NOTES

- Space is built with glass finishes
- Communal pantry
- 2 Private bathrooms, 1 ADA bathroom
- New Windows



FOR LEASE

18 EAST 41ST STREET

5TH FLOOR

18 EAST 41ST STREET

BETWEEN FIFTH & MADISON AVENUES

5TH | SUITE 500 | 5,200 RSF

- 9 offices
- Conference room
- Copy room

SPACE NOTES

- Wet pantry
- 3 bathrooms

