

49

W

45

BRAND NEW LOBBY AND ELEVATOR CABS



BUILDING FEATURES

Building recently underwent \$1M Capital Improvement Program which included brand new lobby and elevator cabs

Close proximity to Grand Central and Bryant Park

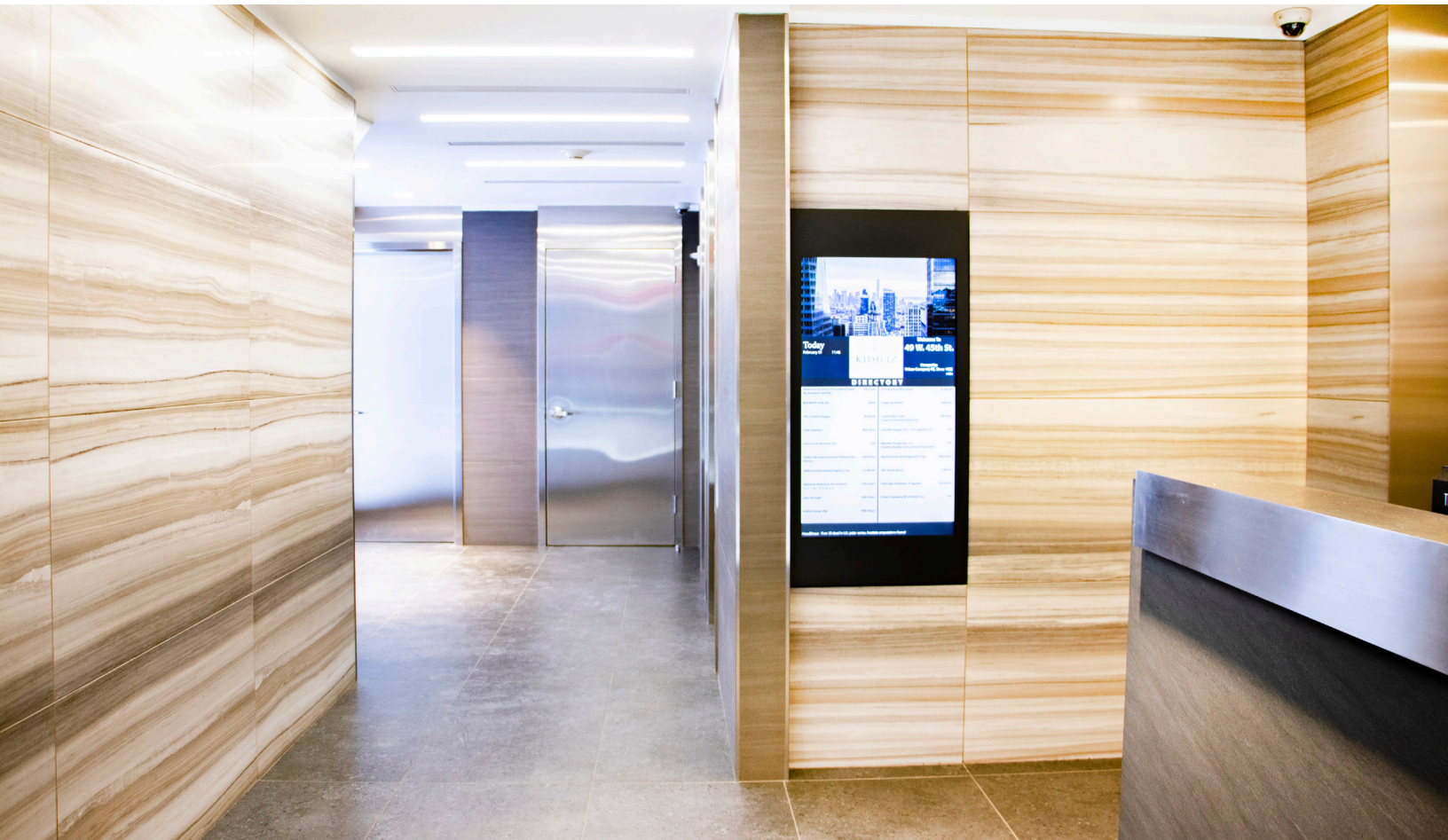
On-site ownership/management

ENTIRE 11TH FLOOR 5,400 RSF

- Landlord will modify floor
- Brand new windows
- Landlord is willing to divide floor into two units

POSSESSION:
IMMEDIATE

TERM:
FLEXIBLE





12TH FLOOR
4,500 RSF

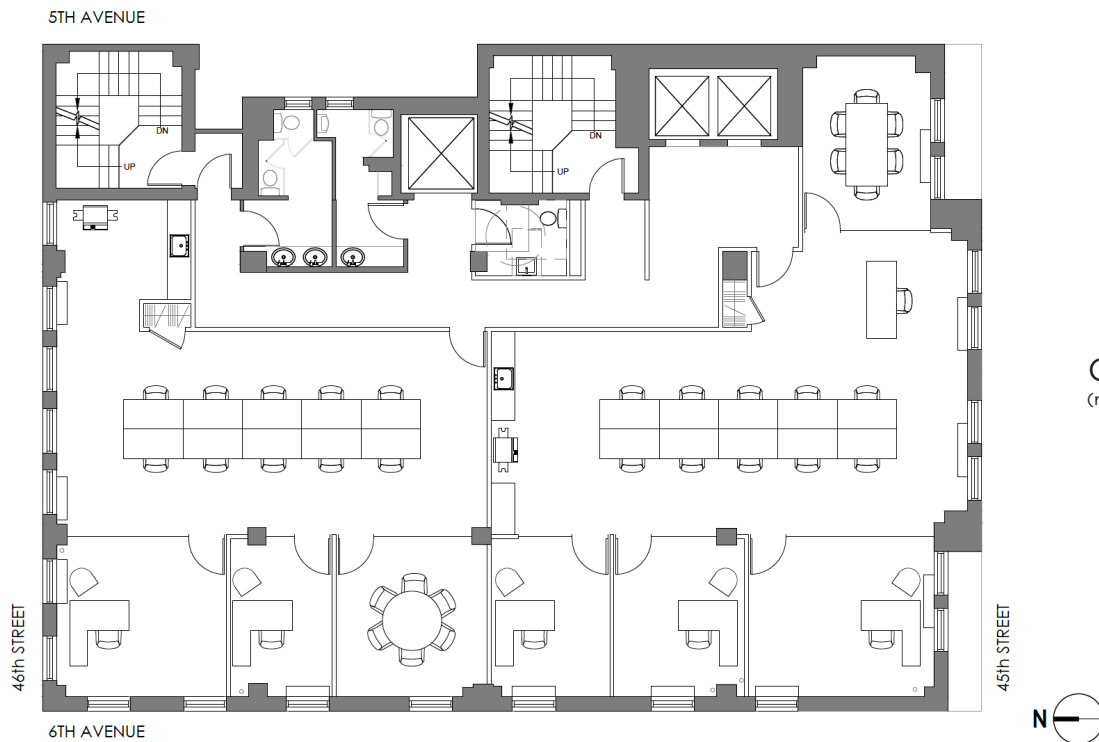
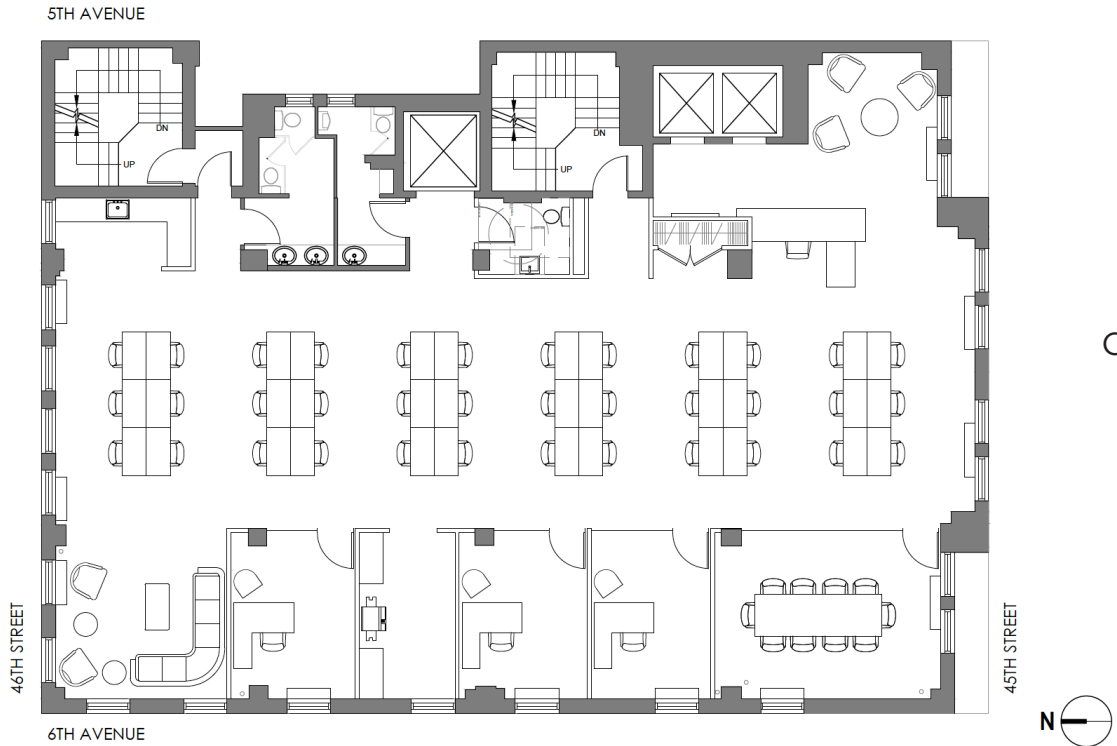
11TH FLOOR
5,400 RSF





BRAND NEW LOBBY
AND ELEVATOR CABS

ENTIRE 11TH FLOOR – 5,400 RSF



BUILDING STANDARD FINISHES

