



27 W 24th Street

New York, NY 10010

SPACE PROFILE

Partial 5th Floor

Premises

5,401

RSF

Negotiable

Rate

12/30/2025

Term

May 2024

Availability

Office

Type

KEY HIGHLIGHTS

- Recently renovated building with a new lobby, ½ block from Madison Square Park.
- New prebuild completed August 2022 with 2 conference rooms, 3 meeting rooms, and 29 sit-stand desks.
- Lobby attendant, on-site super, and 24/7 key card access.

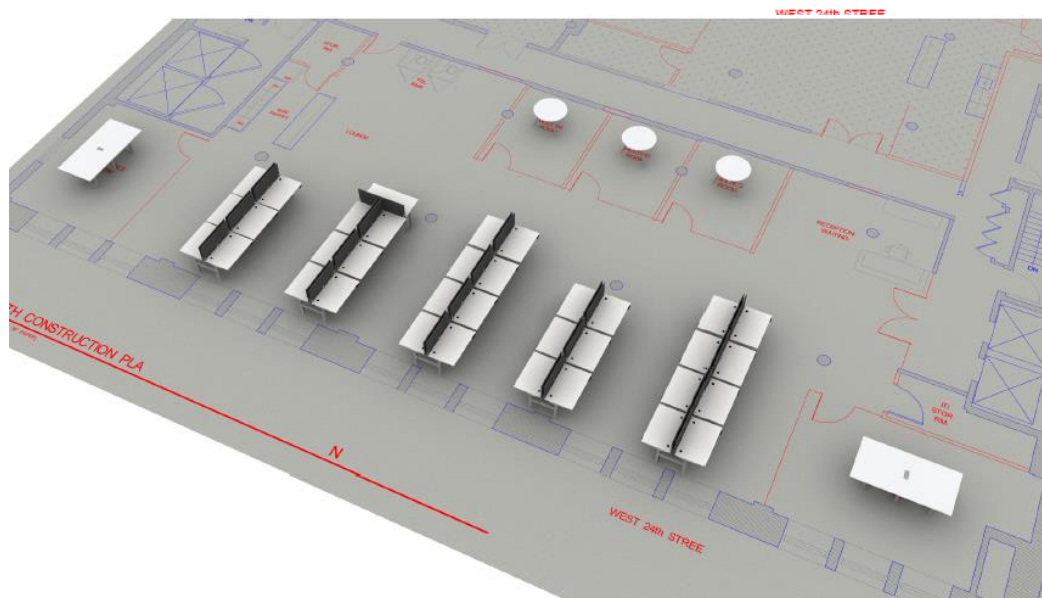
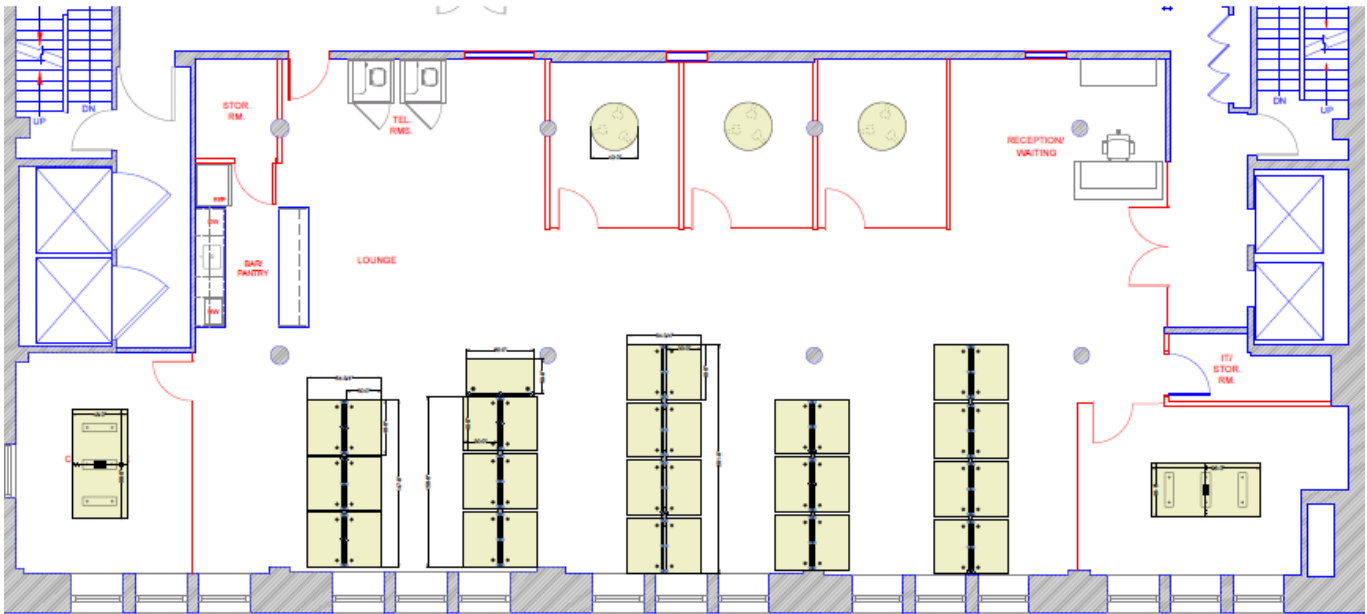


Floorplan

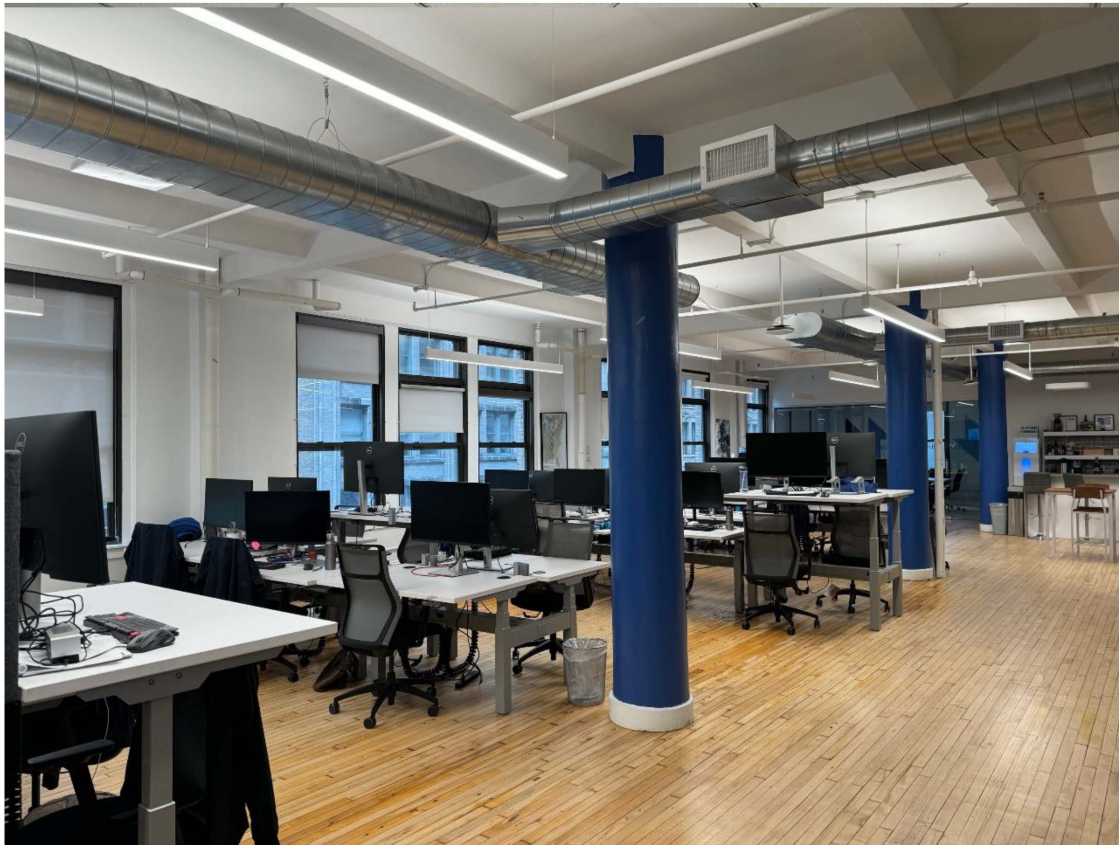
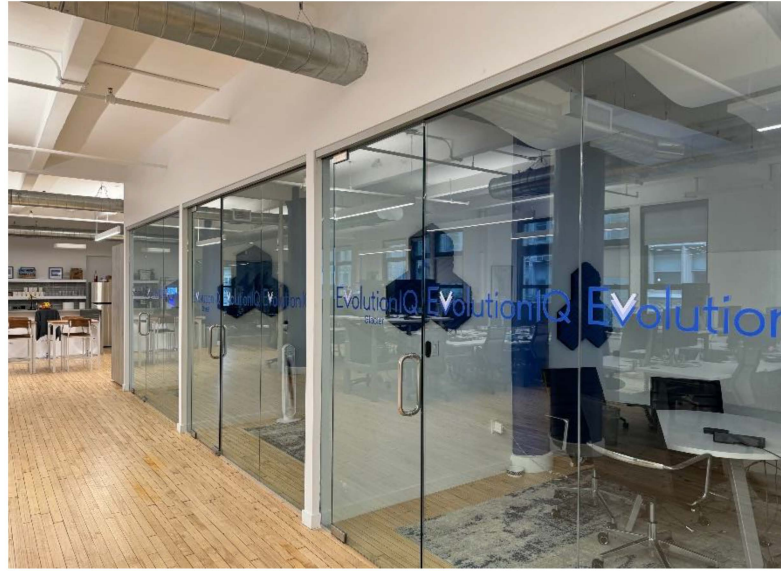
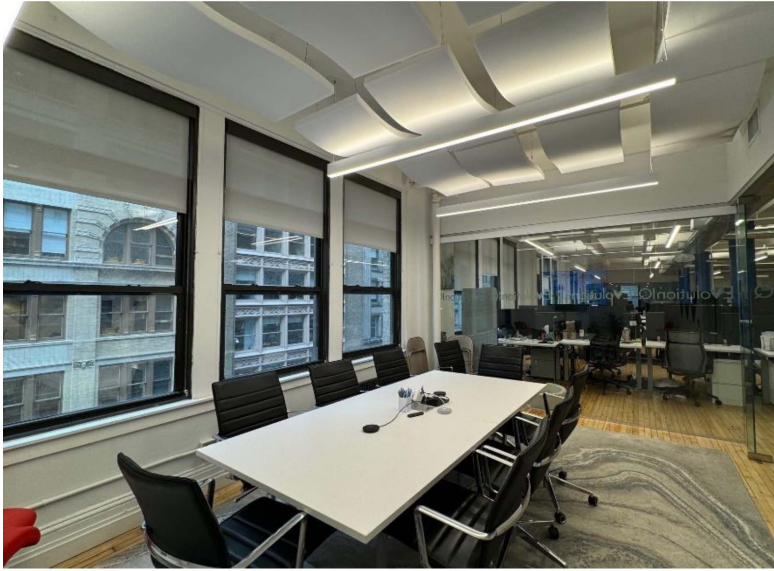
5th Floor 5,401 RSF

Space Features:

- 2 eight-person conference rooms
- 3 four-person meeting rooms
- 29 workstations
- Pantry



5th Floor Photos



5th Floor Photos

