

115 West 30th Street

Penn Plaza, New York

Between Sixth and Seventh Avenues

Building Overview

115 West 30th Street is situated right off Nomad, which is immersed in the ultimate lifestyle for tech trendsetters. This neighborhood is home to Manhattan's most talked-about luxury boutique hotels ([Virgin Hotel](#)), critically acclaimed new restaurants, chic nightspots, and world-class entertainment venues, NoMAD is the ultimate setting for companies seeking a location as suitable to hosting and entertaining high-profile clients as it is to attracting and retaining top talent.

Building Highlights

- 12-story, 166,000 SF office building
- Class B Office Tower
- 24-hour concierge
- Recently Renovated Lobby

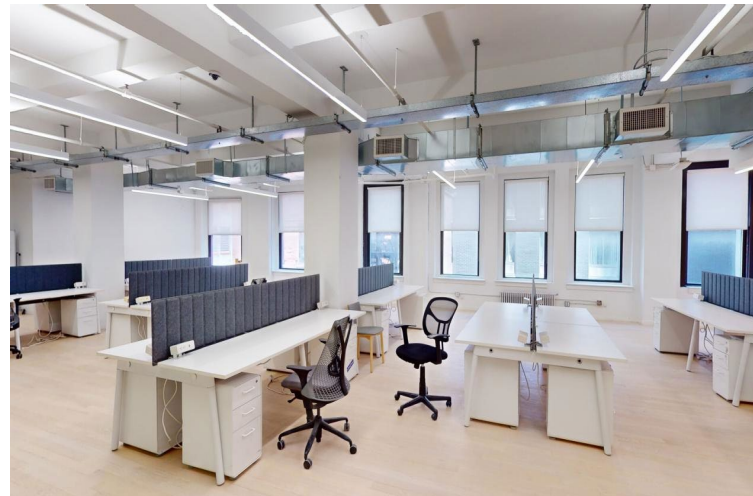
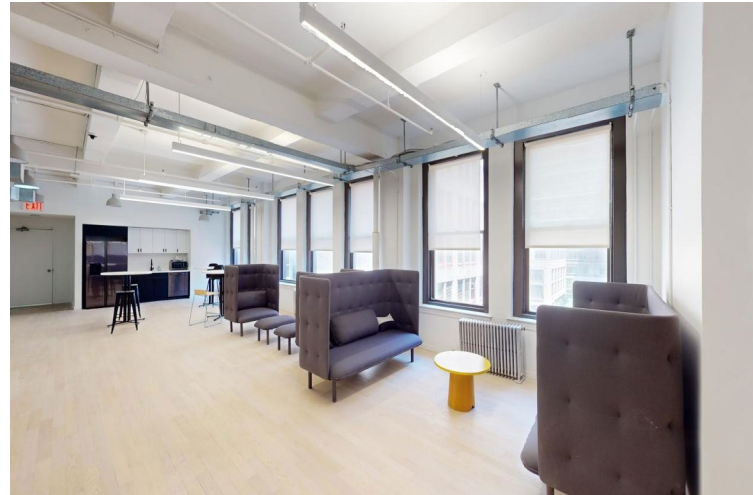
Lease Term

Negotiable



Space Description

Perfect plug and play space for a team of 40 - 50 employees. The space has hardwood floors, exposed ceilings, LED light fixtures and gets great natural light throughout. The space comes fully furnished and wired and ownership is open to providing modifications per tenant's request.



Floor Plan

\$20,700 / month

115 West 30th Street

Partial 6th Floor

5,649 SF

Open Seating

Workstations	40
Reception Area	1

Collaboration Space

Office/Meeting Rooms	3
Conference Rooms	1

Support

Café / Lounge Area	1
Phone Rooms	4

