

OFFICE
SUBLEASE

5,681 SF

PLUG & PLAY
OPPORTUNITY

286 MADISON AVENUE

Corner of Madison Avenue and 40th Street



Availability:

- 3rd Floor: 5,681 SF
- Possession: Immediate
- Rent: Upon Request
- Term: Thru November 2026

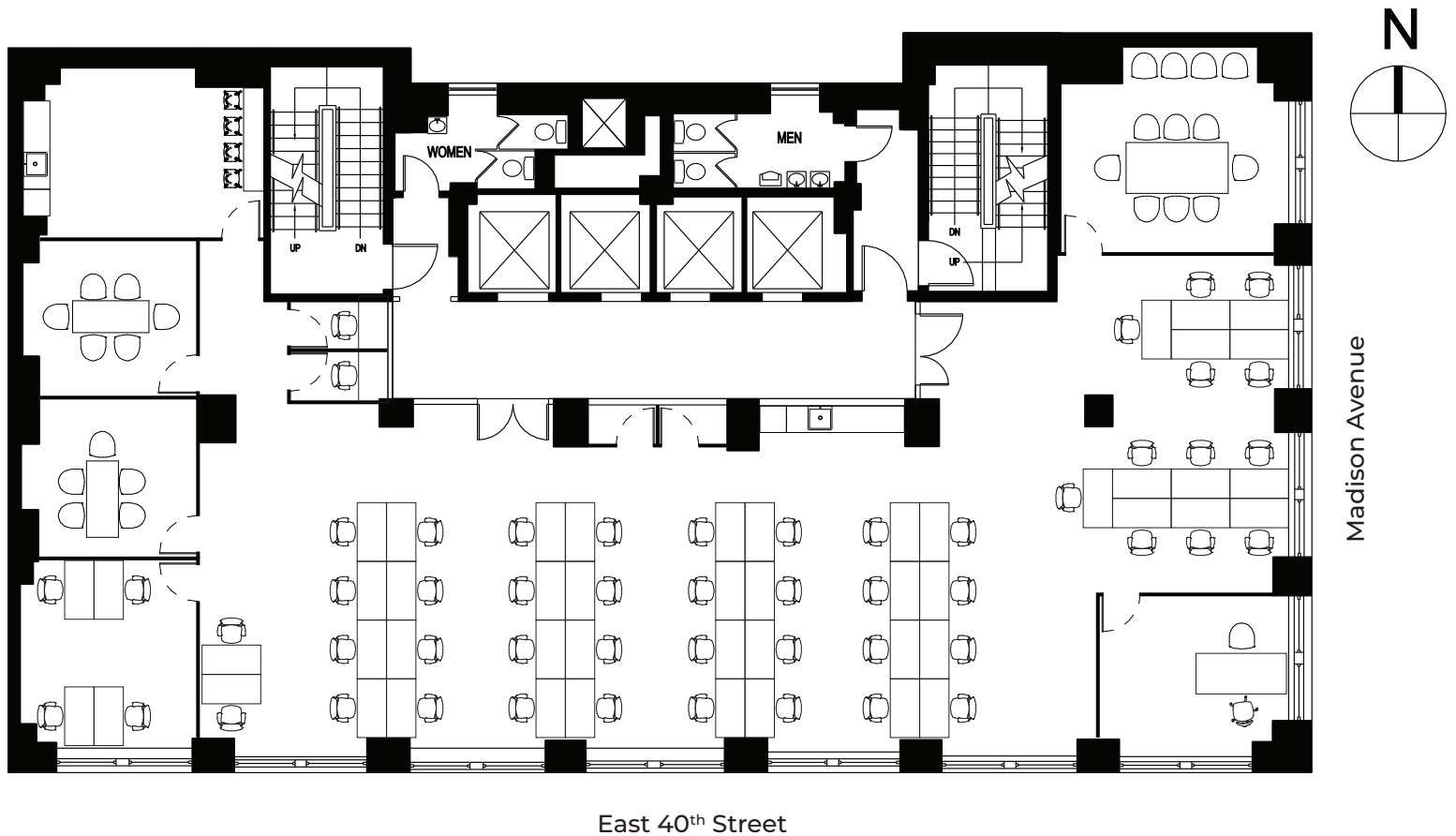
Space Features:

- Full floor, plug & play opportunity
- Space features a mix of glass fronted offices/conference rooms, 2 phone rooms, pantry and open area for 40+.
- Abundance of natural light

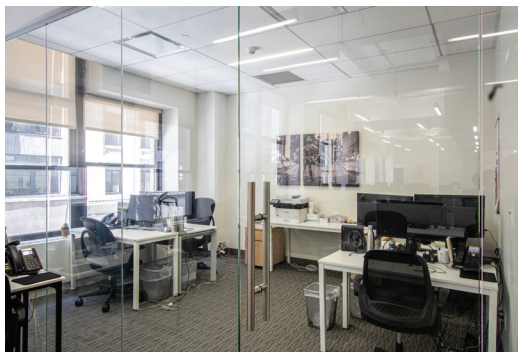


286 MADISON AVENUE

Corner of Madison Avenue and 40th Street



3rd Floor: 5,681 SF



Building Features:

- Steps away from Bryant Park and Grand Central
- Recent renovations of lobby and elevators