



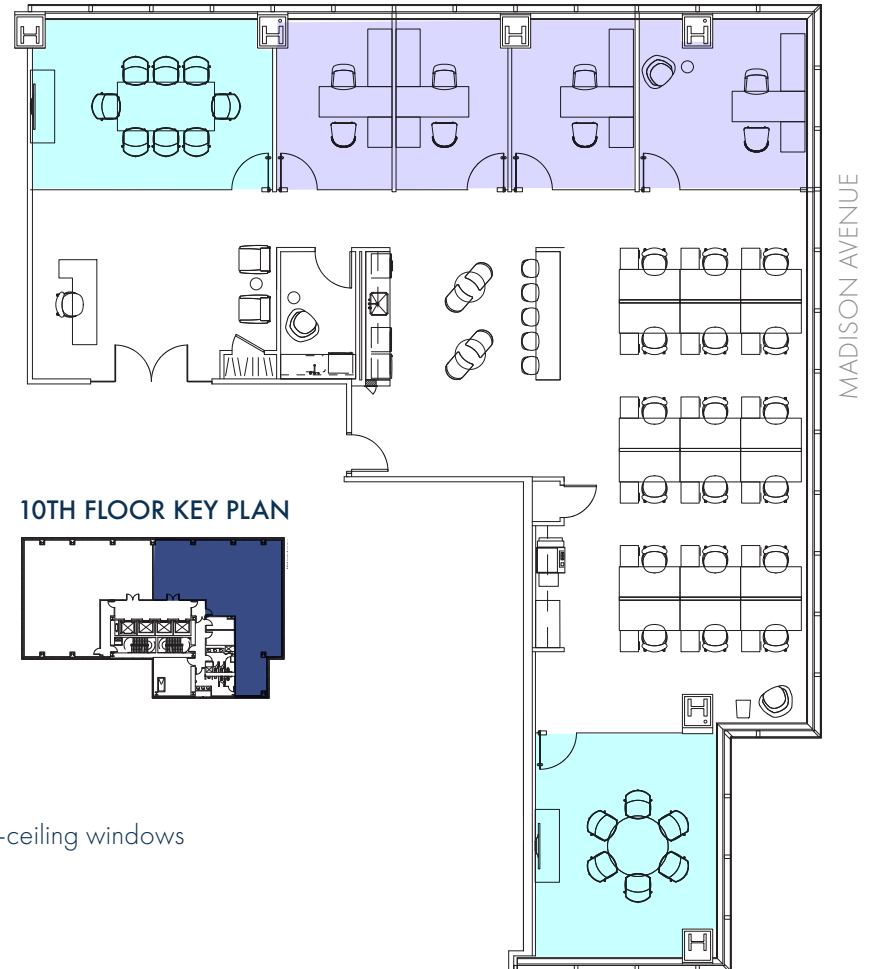
510  
MA  
DIS  
ON  
avenue

# PARTIAL FLOOR OPPORTUNITIES

## PARTIAL 10TH FLOOR

SIZE	5,763 RSF
POSSESSION	5/2023
CONDITION	BRAND NEW PRE-BUILT ESTIMATED TO DELIVER AROUND 5/2023

EAST 53RD STREET



10TH FLOOR KEY PLAN

## SPACE FEATURES

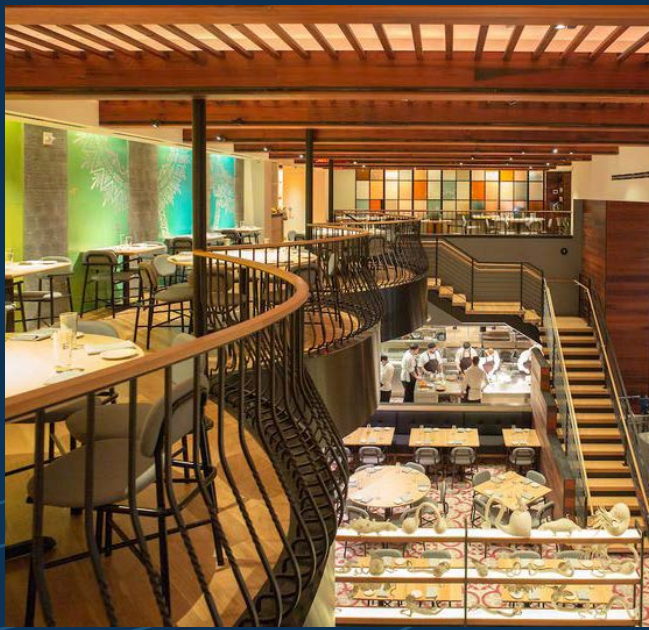
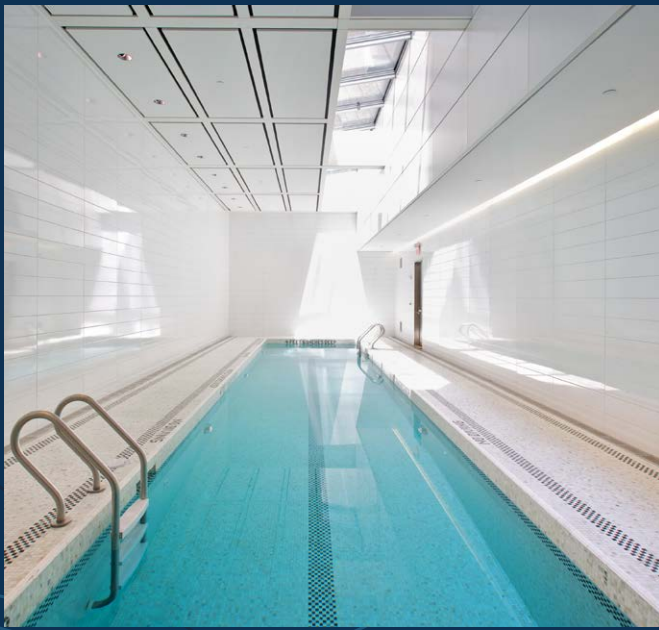
- 10-foot finished ceilings with floor-to-ceiling windows
- Tremendous light and air
- Column-free floor plate



# BUILDING STANDARD FINISHES







## BUILDING FEATURES

- Elite financial services tenant roster
- 6,500 square-foot garden and furnished terrace shared amenity
- Tenant-exclusive health club with a lap pool powered by **THE WRIGHT FIT**
- World-class retail including the brand new *Empellén* restaurant by Chef Alex Stupak