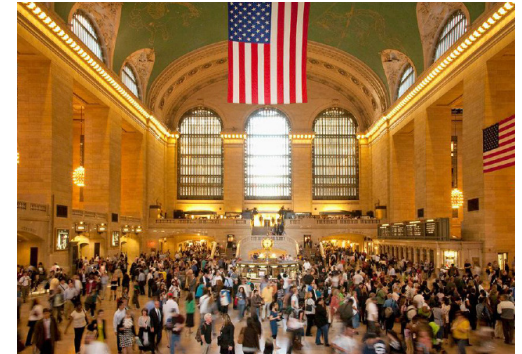


16w36.com: OWNERSHIP & FEATURES...

16 West 36th Street is a 13 Story 67,272 SF office building in Midtown right off the corner of 5th Avenue. One of Manhattan's most convenient locations. Positioned perfectly for all transportation hubs including subway lines, bus lines, Penn Station and Grand Central Station. 16W36 ground-floor tenant is Clinton Hall, no better place to unwind after a long day making for a perfect work/play location.

Noteworthy Neighbors:

Long Island Railroad
Grand Central Station
Port Authority Bus Terminal
Keens Chophouse
Madison Square Garden
Bryant Park
The Empire State Building
Macy's Herald Square
Herald Square Subway Station



16w36.com: FULL-FLOOR IDENTITY - 5,320 RSF

SPECIFICATIONS:

OWNERSHIP: Kiamie Industries, Inc.

MANAGEMENT: HSP / Windsor Management Corp.

LOCATION: 36th between Fifth and Sixth

HISTORY: Built in 1920

STORIES: 13

FLOOR SIZES: Full Floors up to 5,320 RSF

CEILING HEIGHT: 11 Feet

WINDOWS: Crystal 5500 double-hung, 4'x8'

COLUMN SPACING: Typically 21'

HEAT: Building steam and HVAC heat pumps

HVAC: Individual tenant controlled air cooled units

PLUMBING: City water service pumped to house tank

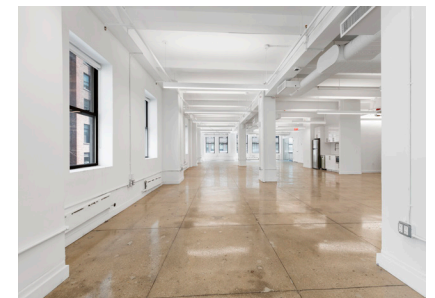
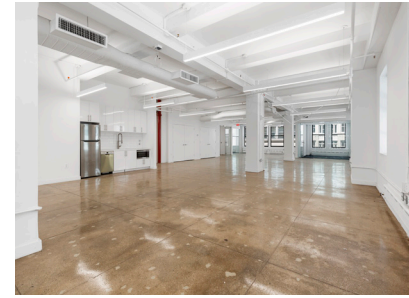
SPRINKLER: Building fully sprinklered

LIFE SAFETY: Class "E" fire alarm system

ELECTRICAL: Direct metered floors at 300 amps each

ELEVATORS: 2 serving all floors

TELECOM: Verizon FIOS, Spectrum and Pilot Fiber



AVAILABLE IMMEDIATELY
FLEXIBLE TERMS
CALL FOR PRICING



16w36.com: ENTIRE 4TH FLOOR - 5,320 RSF

