



1881 Broadway

1881 Broadway at a glance

4

TOTAL BUILDING FLOORS

19,653

TOTAL BUILDING SQ FT

2

WEWORK FLOORS +
FULL FLOOR OPPORTUNITIES

12,120

TOTAL WEWORK SQ FT

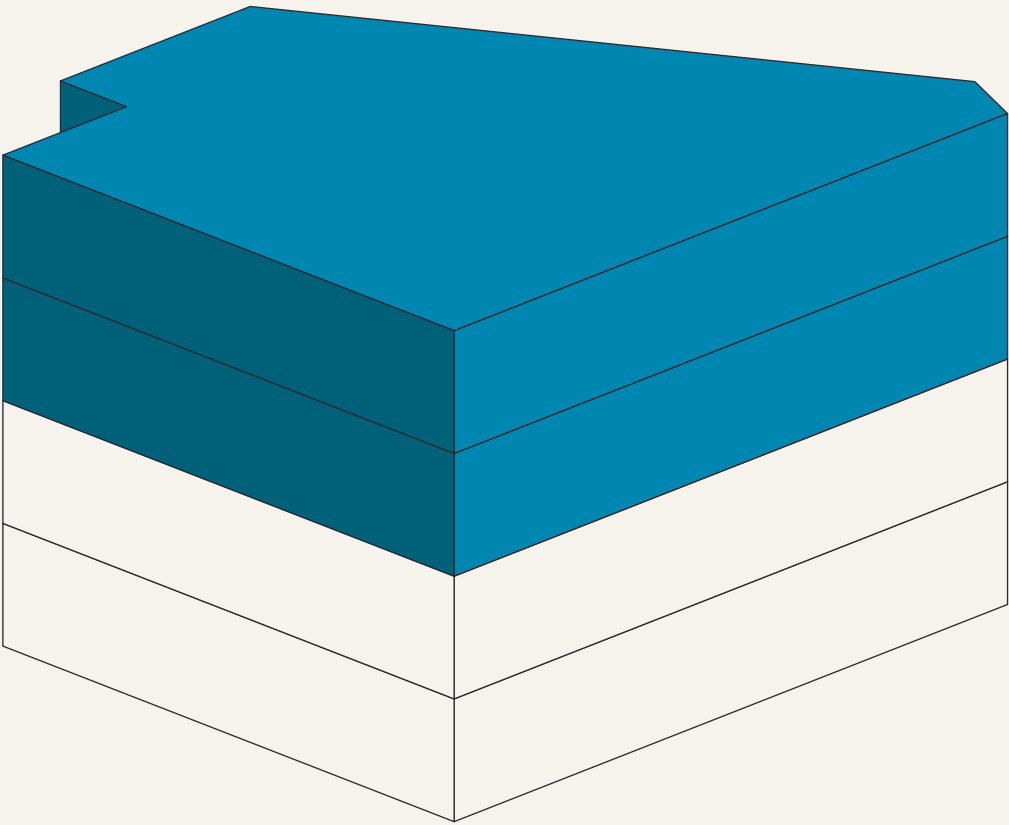


Recently Renovated Office Building Near Central Park on the Upper West Side

BUILDING OVERVIEW

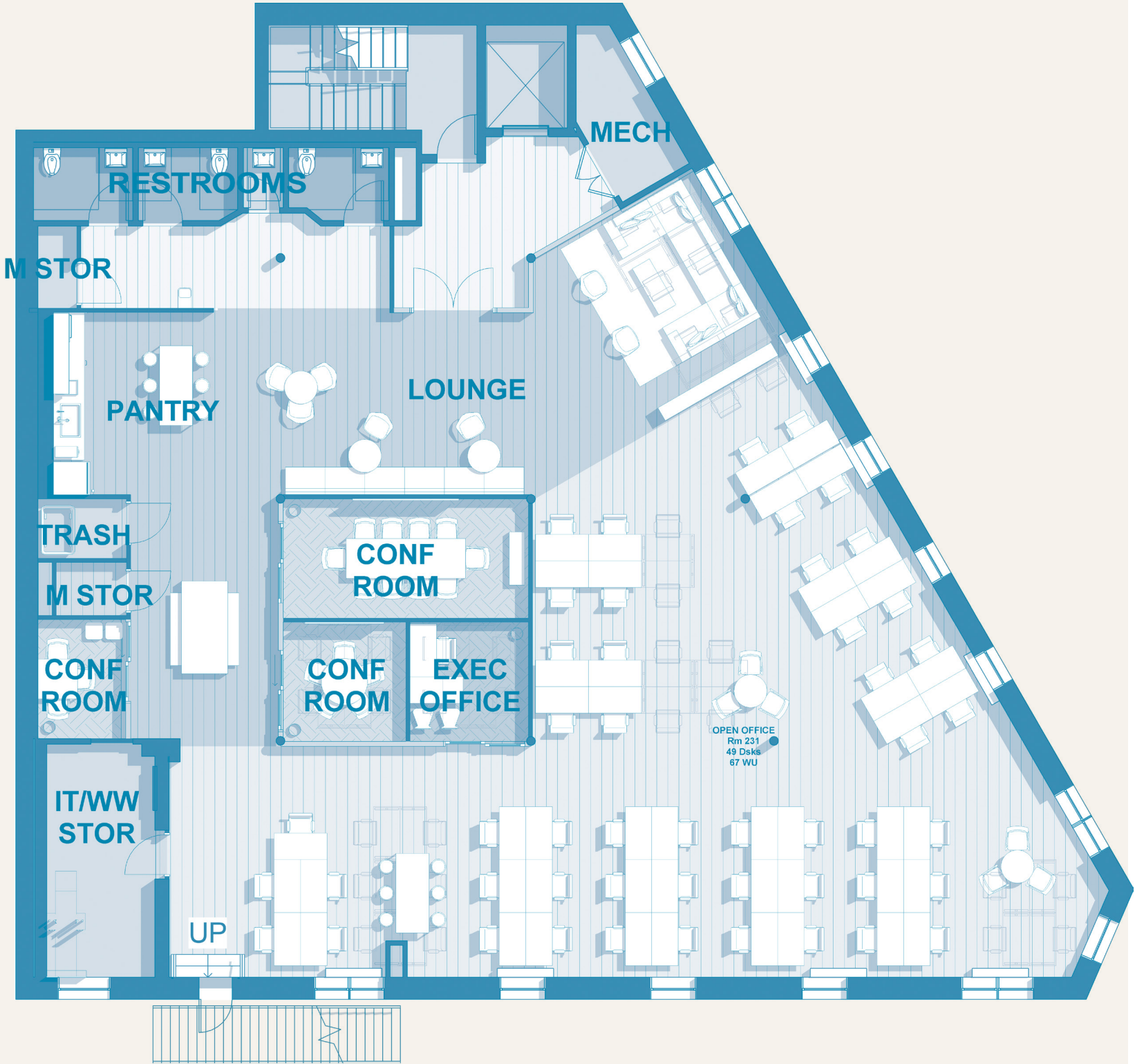
Built in 1930 and renovated with high-end amenities, 1881 Broadway is located in Lincoln Square on NYC's Upper West Side. A central location and light-filled workspaces make this the perfect home for businesses small and large.

Designed
for efficiency,
collaboration,
and productivity



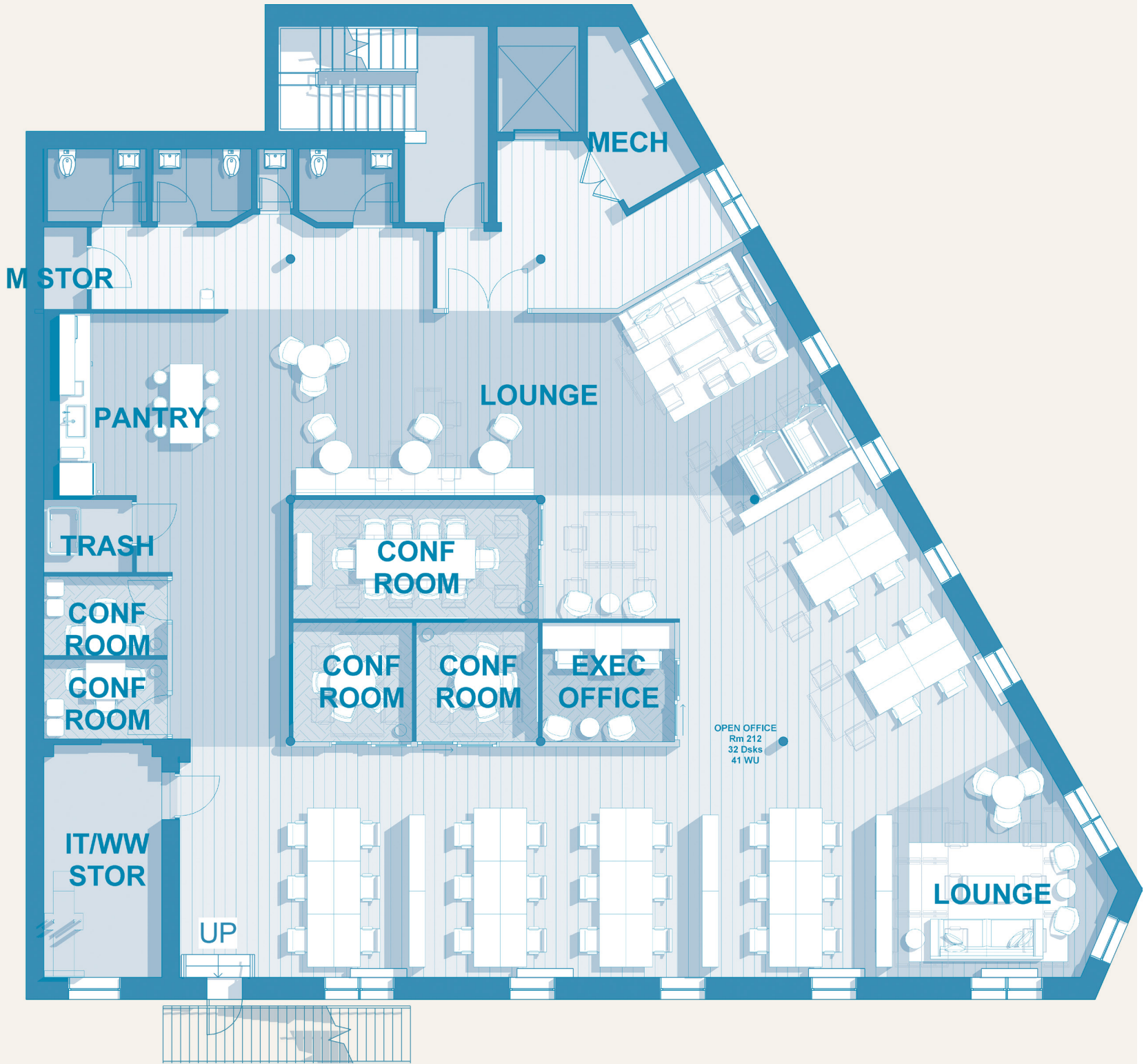
WEWORK FOOTPRINT

FLOOR	RSF
3	6,060
4	6,060



3rd Floor

6,060 RSF



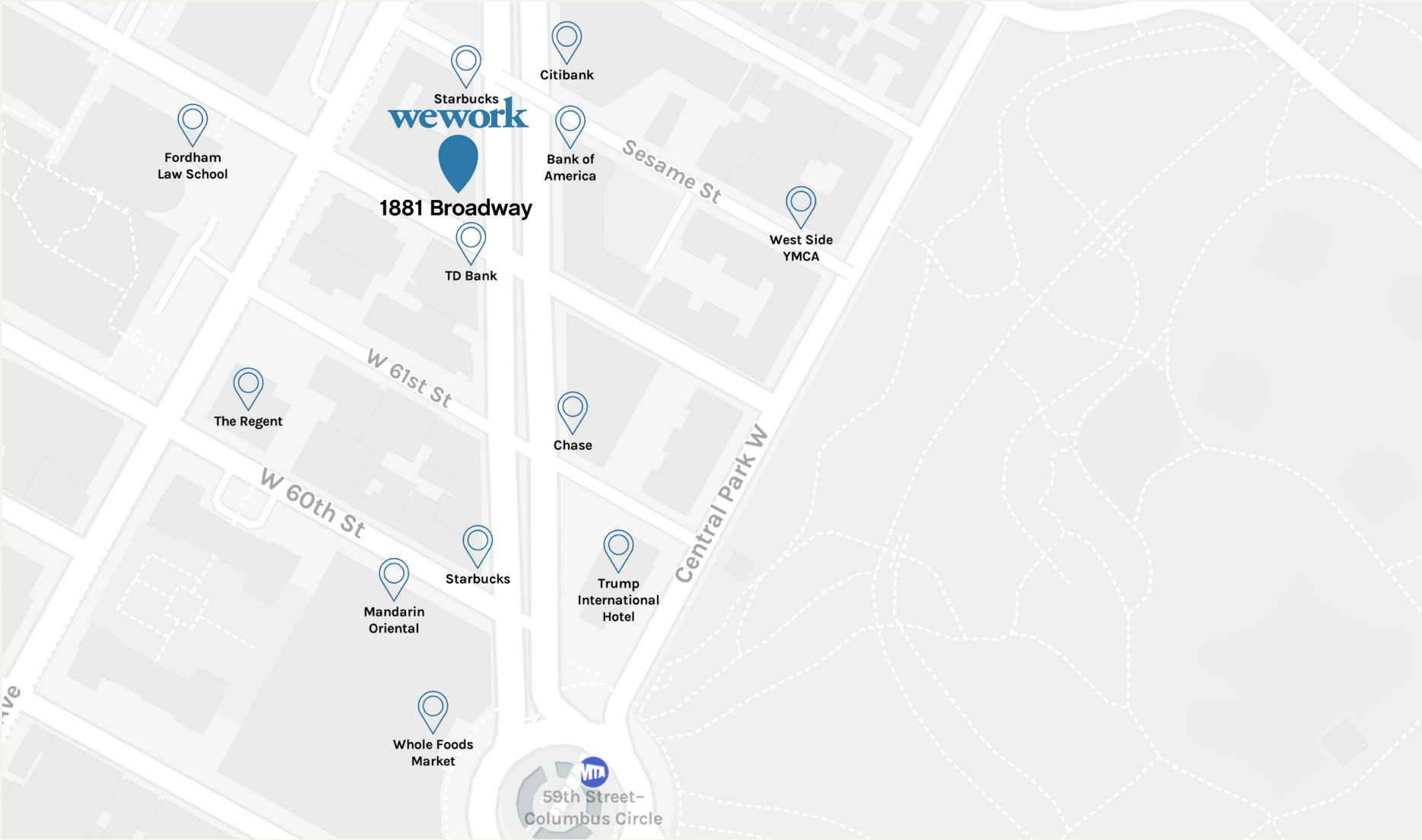
4th Floor

6,060 RSF



The city at your doorstep

Blocks from Central Park, Lincoln Center, and Columbus Circle, 1881 Broadway puts the best of the Upper West Side at your doorstep. Members can grab a drink on the rooftop of the nearby Empire Hotel, catch a show at the Metropolitan Opera, or go shopping at the Time Warner Center. Nearby 1, 2, A, B, C, and D train stops make commuting easy.



NEARBY TRANSPORTATION

66th Street-Lincoln Center Station (Subway, 1, 2 Lines)	0.2 mi	Penn Station (Commuter Rail, New Jersey Transit/LIRR Lines)	1.9 mi
59th Street-Columbus Circle Station (Subway, 1, 2, A, B, C, D Lines)	0.5 mi	Grand Center Station (Commuter Rail, Hudson, Harlem, New Haven Lines)	1.9 mi
57th Street Station (Subway, N, Q, R Lines)	0.6 mi	LaGuardia Airport	7.6 mi
72nd Street Station (Subway, A, B, C Lines)	0.6 mi	Newark Liberty International Airport	16.0 mi
57th Street Station (Subway, 4, 6 Lines)	0.7 mi	John F. Kennedy International Airport	17.6 mi

1881 Broadway
New York, NY
10023

