

635 MADISON AVENUE



635 MADISON AVENUE

- Boutique medical building
- Accessible to major hospitals & public transportation
- Signage & identity can be provided for a large block medical tenant
- Built medical space and whiteboxed full floors available for immediate occupancy

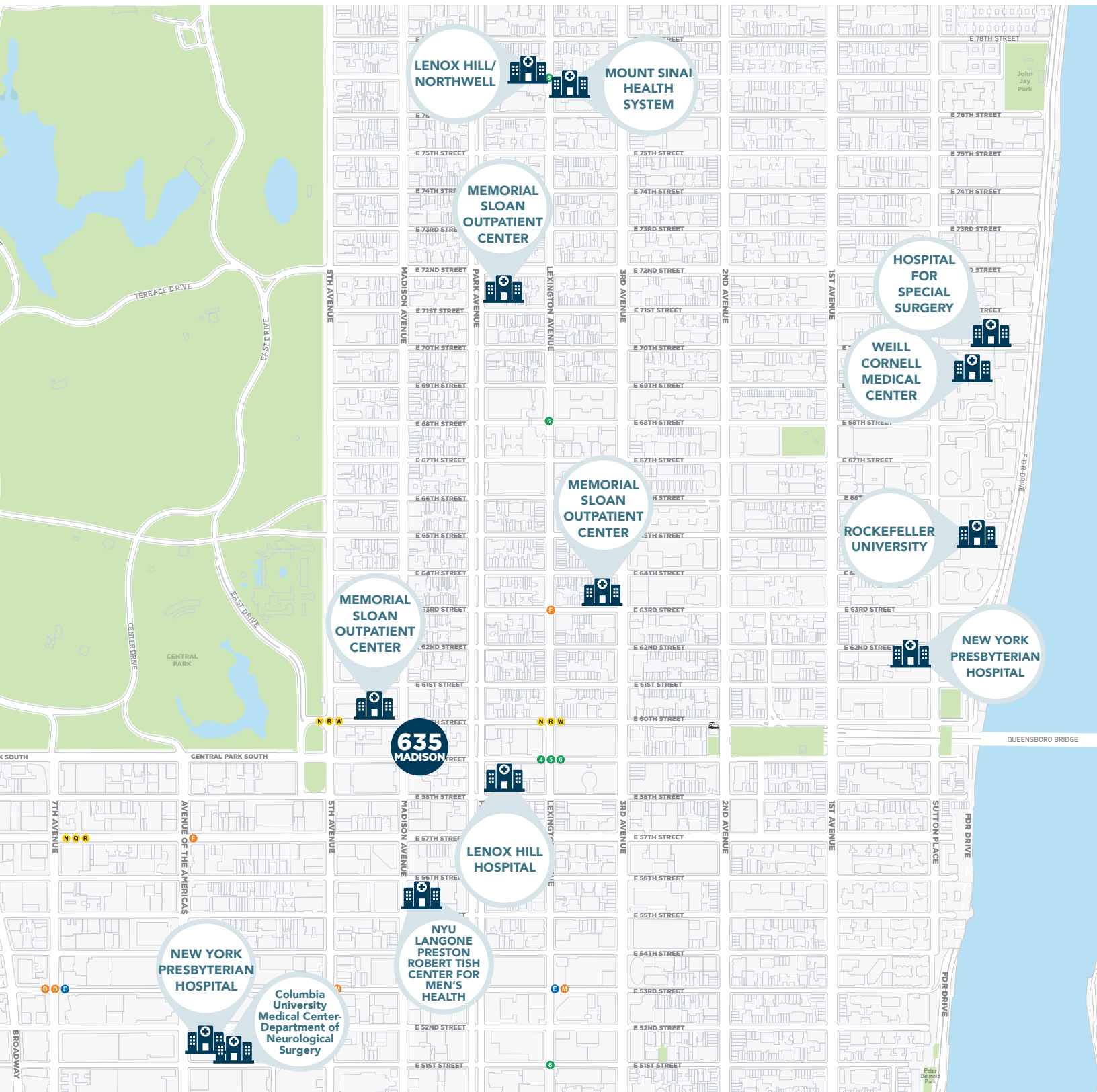


**ENTIRE 16TH
6,217 RSF**

*Built medical space
Immediately Available

635 MADISON AVENUE

Selected Hospitals / Medical Providers



635 MADISON AVENUE

FLOOR 19

ENTIRE 18TH FLOOR | AVAILABLE
4,806 RSF

FLOOR 17

ENTIRE 16TH FLOOR | AVAILABLE
6,217 RSF

ENTIRE 15TH FLOOR | AVAILABLE
6,277 RSF

FLOOR 14

FLOOR 13

PARTIAL 12TH FLOOR | AVAILABLE
3,279 RSF

PARTIAL 11TH FLOOR | AVAILABLE
882 RSF

FLOOR 10

FLOOR 9

FLOOR 8

FLOOR 7

FLOOR 6

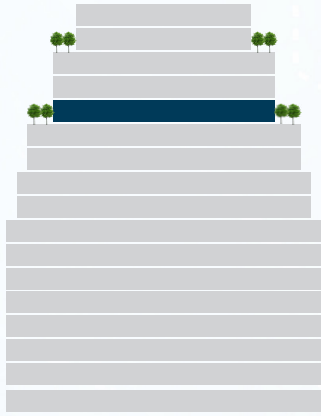
ENTIRE 5TH FLOOR | AVAILABLE
11,303 RSF

FLOOR 4

FLOOR 3

ENTIRE 15th FLOOR

635
MADISON AVENUE



6,277 RSF

- Features unique wrap-around usable terrace
- Abundance of natural light
- Efficient side core floor plate
- Prestigious Madison Avenue address

POSSESSION

Immediate

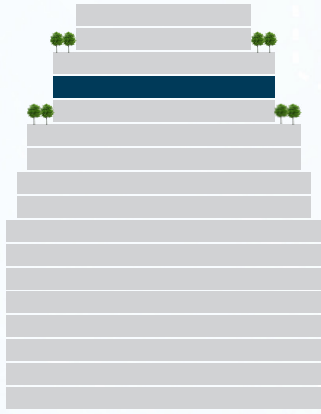
RENT

Upon request

MADISON AVENUE

EAST 59TH STREET





6,217 RSF

BUILT MEDICAL SPACE

- Full floor built medical space

POSSESSION

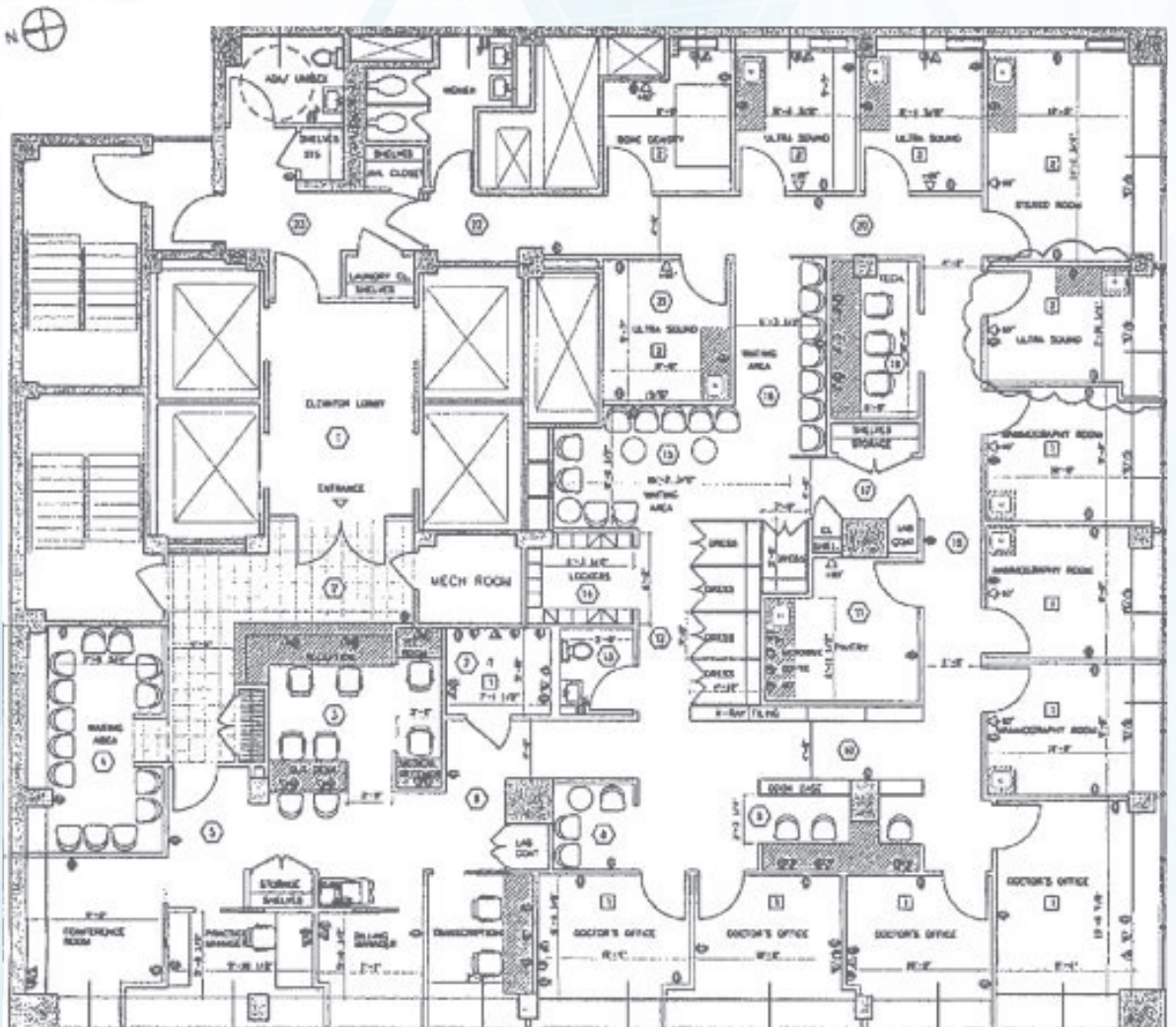
Immediate

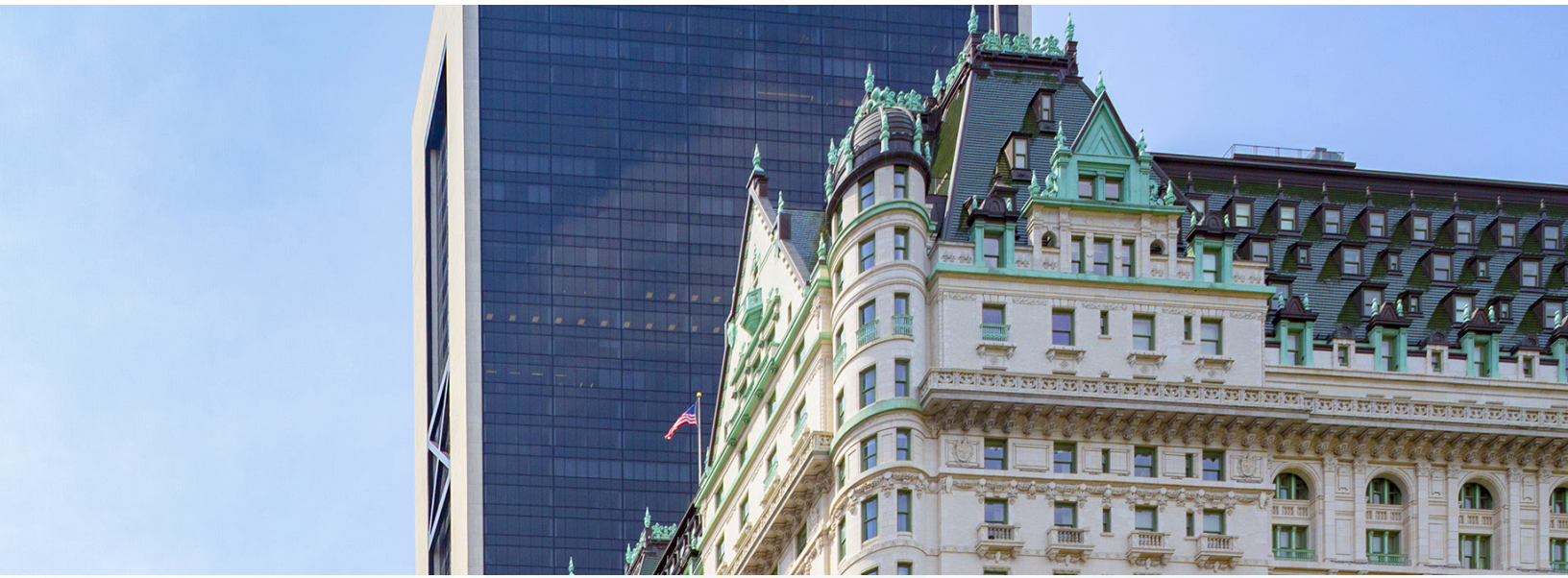
RENT

Upon request

MADISON AVENUE

EAST 59TH STREET





635
MADISON AVENUE

