

# 200

P A R K   A V E N U E   S O U T H





---

# 9TH

PARTIAL FLOOR

---

SIZE:	6,542 SF*
LEASE EXPIRATION:	December 31, 2028
ASKING RENT:	Upon Request
AVAILABLE:	Immediate

\*Adjacent unit in raw condition can be made available - 2,139 SF





## PROPERTY OVERVIEW

- Located at the foot of Union Square Park
- Steps from Union Square Transit hub's subway lines  
**L N Q R W 4 5 6 F M 1 2 3**
- Attended Building Lobby
- Owner-occupied building
- Recently renovated lobby

## FEATURES

- Creative installation with polished concrete floors and exposed ceilings
- Installation features 5 standard offices, 2 executive offices / conference rooms, 18 workstations, eat-in pantry.
- Fantastic light with 3 sides of exposure
- 12'-2" Ceiling heights
- Tenant controlled air conditioning
- Large operable windows



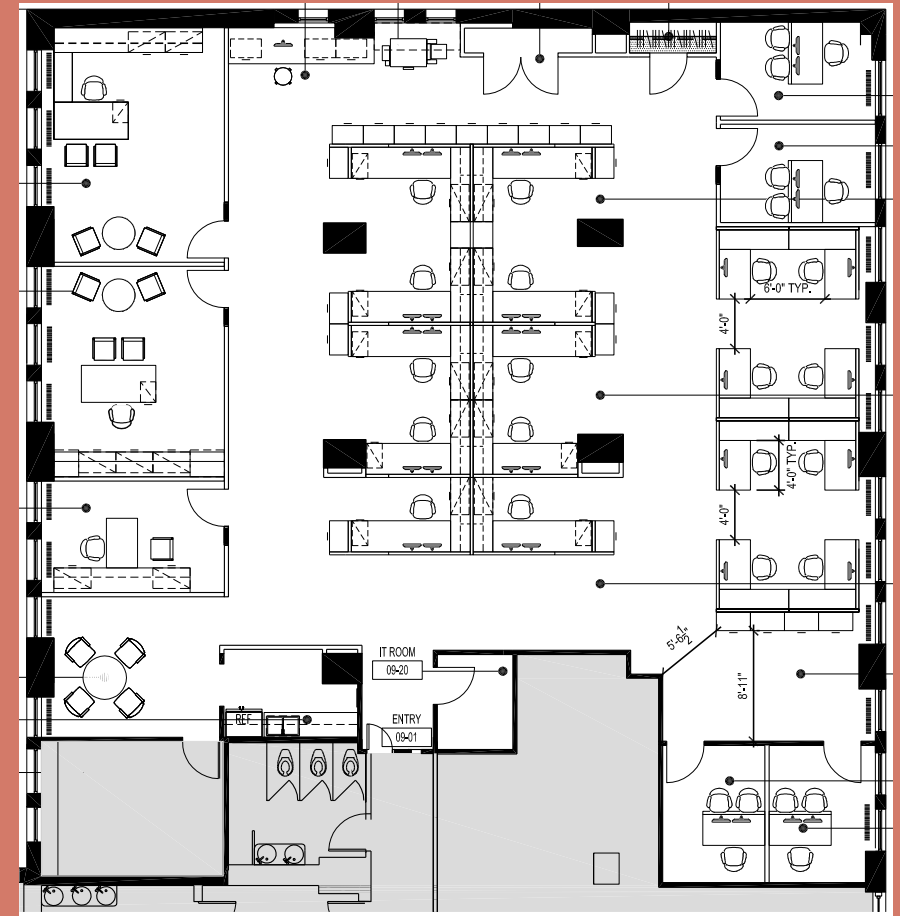




## FLOOR PLAN

NORTH

EAST 18TH STREET



PARK AVENUE SOUTH

EAST 17TH STREET

UNION SQUARE PARK



# 200

PARK AVENUE SOUTH

