

8 West 40th Street

Bryant Park Views
Furnished and ready to go

Between Fifth and Sixth Avenues

Floor/Area

- + Entire 9th - 6,667 RSF
- + Entire 10th - 6,667 RSF
- + **Total** **13,334 RSF**

Division

- + Front of 10th - 2,667 RSF
- + Back of 10th - 4,000 RSF

Possession

- + Immediate

Term

- + 8/30/2026 (shorter term considered)

Rental

- + Upon Request

Electricity

- + Submetered

Escalations

- + 3% + Real Estate Taxes

Building | Space Features

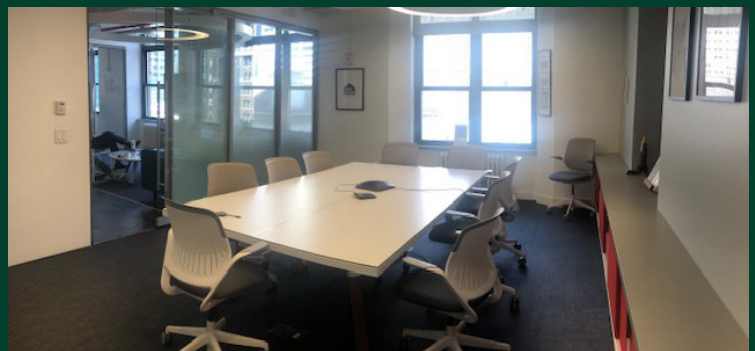
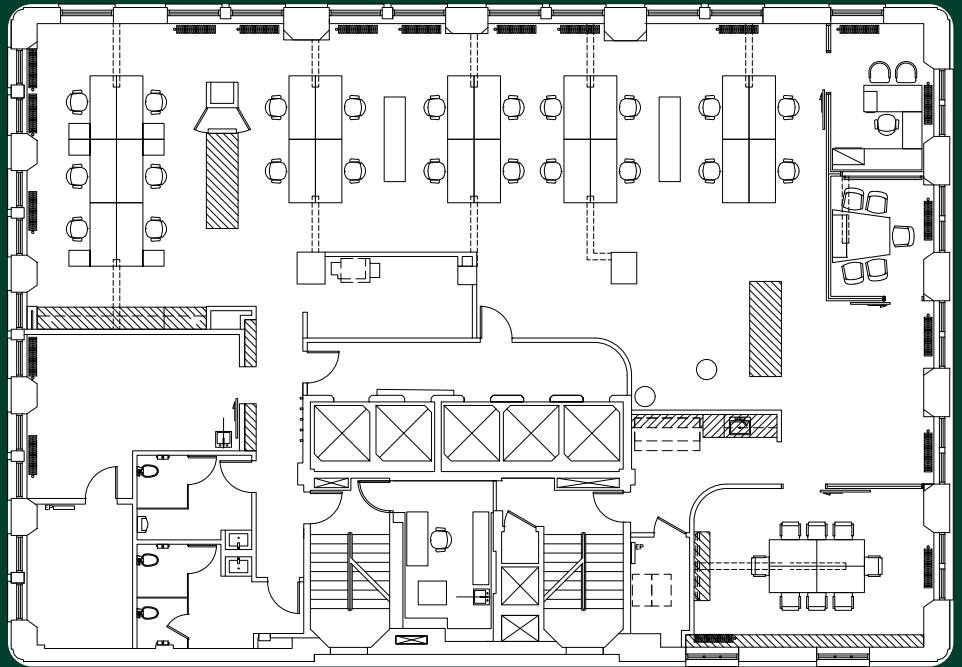
- + Located next to Bryant Park, the building features 24/7 security and LEED Gold certification
- + Walking distance to Grand Central and Penn Station



9th Floor

6,667 RSF

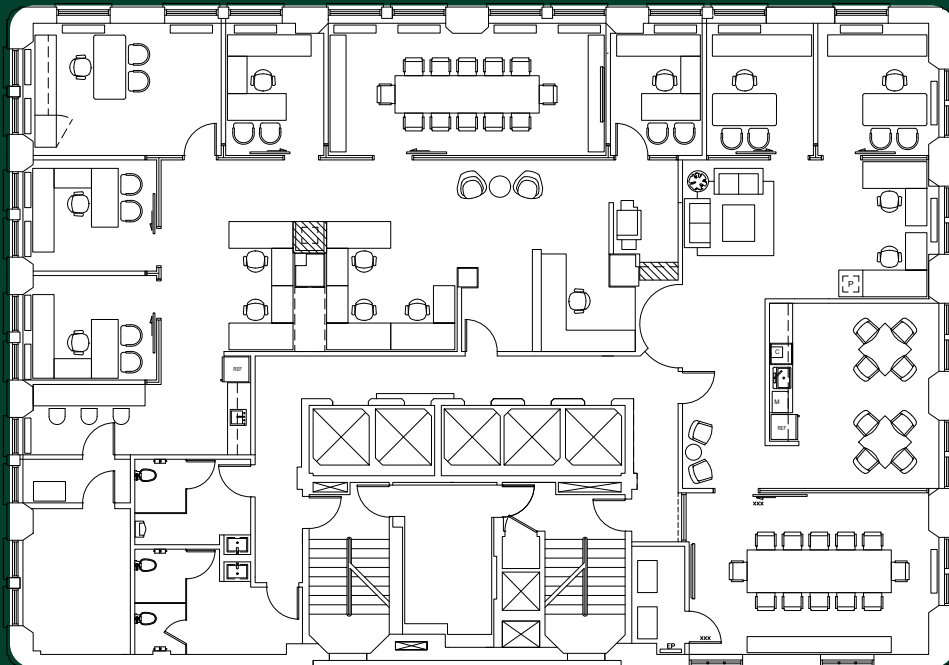
- + 3 windowed offices facing Bryant Park
- + Windowed conference room
- + Lunch area
- + Open space
- + Pantry
- + Above-standard fresh and modern finishes
- + Sweeping Bryant Park Views



10th Floor

6,667 RSF

- + Perimeter offices
- + Open space
- + Windowed conference room
- + Large sit-in pantry
- + Above-standard fresh and modern finishes
- + Sweeping Bryant Park views
- + Can be divided to 4,000 sq ft & 2,667 sq ft
- + The 2,667 sq ft is prime front facing space with views of the Bryant Park



Office | For Sublease

Direct Bryant Park Views



Area Amenities

