

521
Fifth



SPACE FOR WORK

LOBBY TRANSFORMATION



A lobby that focuses on anticipating your guests. A coffee bar that gives you a recharge. A gym experience that's always at your fingertips. At 521 Fifth, we've carefully crafted spaces that you can make your own, whenever and however you want. New lobby turnstiles will be installed to accommodate touchless entry and preauthorized guest registration.

THE NEIGHBORHOOD



Just steps away from Grand Central and Bryant Park, 521 5th Ave. sits at the intersection of New York City commerce and culture. The hustle and bustle along this midtown corridor reflects the city's endless energy and diversity, providing inspiration to a new way of working.



Building Exterior



Entrance



Lobby



Coffee Bar



24th Floor Terrace

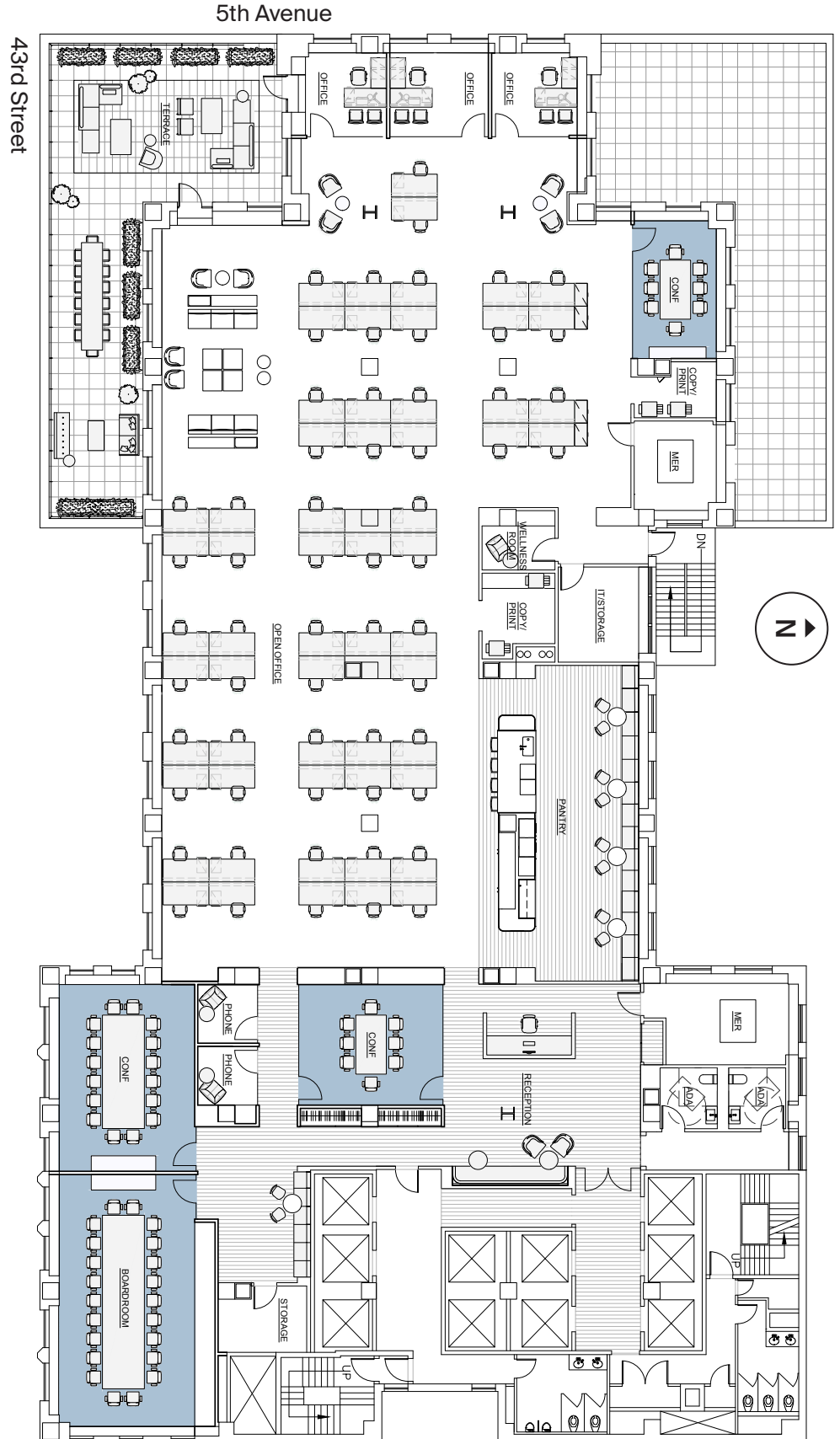


24th Floor Open Office

14TH FLOOR

NEWLY
CONSTRUCTED
PREBUILT
17,796 RSF

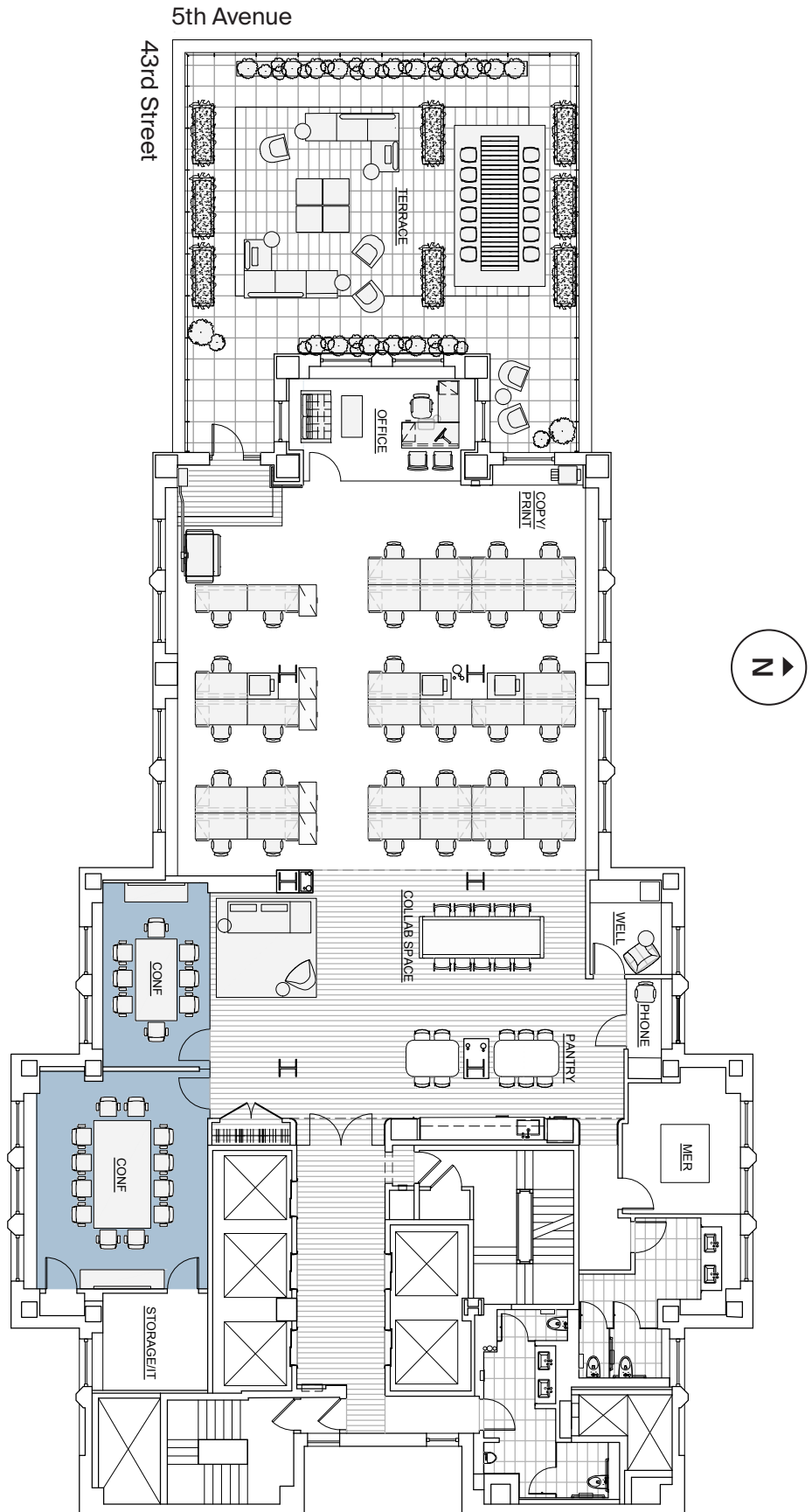
Workstations	60
Headcount	64
● Conference room	3
● Boardroom	1



24TH FLOOR

NEWLY
CONSTRUCTED
PREBUILT
6,725 RSF

Workstations	31
Headcount	32
● Conference room	2



WELLNESS UPGRADES



BUILDING

MERV-13 filters have been installed in all base building air handlers to enhance filtration efficiency and eliminate lower micron particles while maintaining acceptable airflow

Frequent disinfection of lobby common areas and high touchpoint surfaces



LOBBY

New lobby turnstiles will be installed to accommodate touchless entry and preauthorized guest registration

Bipolar Ionization technology installed in ductwork to deactivate viruses and bacteria



RESTROOMS

New automatic faucets and soap dispensers will be installed

Antimicrobial Coatings and door hardware will be installed

Touchless hardware including foot pulls and antimicrobial kick/push plates and push bars will replace standard door handles and keypad locks



PREBUILTS

Architects have studied circulation paths, egress, conference room and office sizes, and overall programs for prebuilts to minimize occupant contact and maximize personal space

New automatic faucets and soap dispensers will be installed at prebuilt pantries

Bipolar Ionization technology will be introduced to supply ductwork for the AC units in order to deactivate viruses and bacteria

521 Fifth

