

# 20 WEST 37<sup>TH</sup> STREET

BETWEEN 5<sup>TH</sup> & 6<sup>TH</sup> AVENUES



Floor: 6<sup>th</sup> Floor  
Area: 6,750 RSF  
Term: 2-10 Years

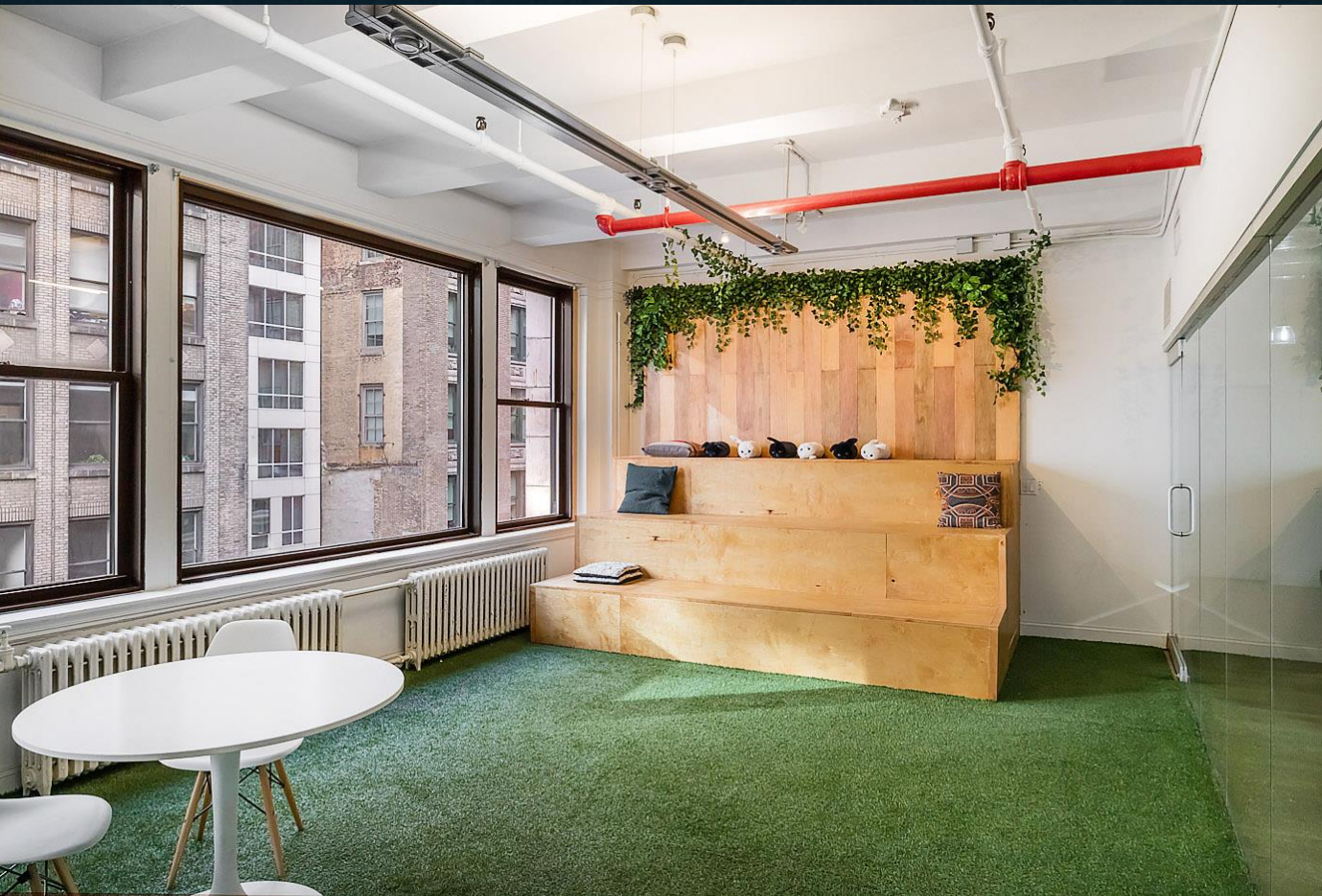
- ☐ Furniture is Included
- ☐ Plug N' Play
- ☐ Beautiful light wood floors
- ☐ Light on 4 sides
- ☐ Landlord will modify installation



**DETAILS:** Entire 6<sup>th</sup> Floor | 6,750 RSF

**Possession** | Immediate

**Term** | 2-10 Years





# OUTSIDE INDOORS:

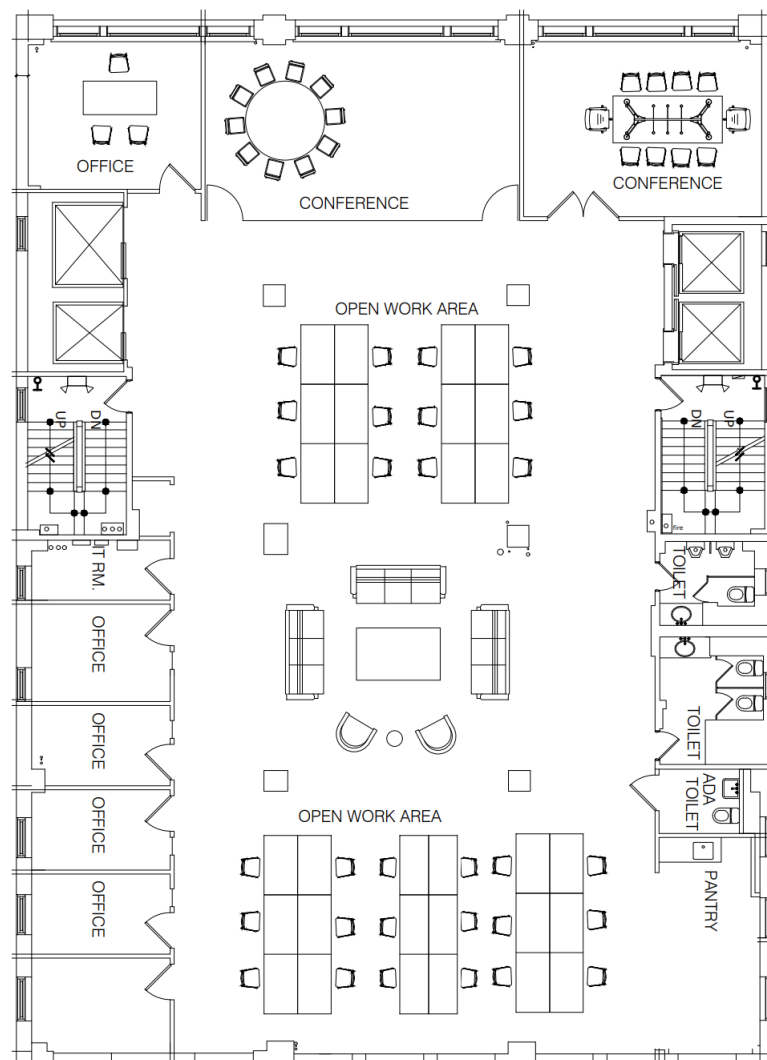
*Bring the Outside  
Indoors!*

“With the ever-growing focus on sustainability and the importance of living green, it’s no surprise that there’s an increased interest in making our offices reflect the outdoors”



# FLOOR PLAN

ENTIRE 6TH FLOOR | 6,750 RSF





Floor: 6<sup>th</sup>

Area: 6,750 RSF

Term: 2-10 Years

- ❑ Furniture is Included
- ❑ Plug N' Play
- ❑ Exposed Ceilings
- ❑ Light on 4 sides
- ❑ Highly Central Location

