



600 LEX



ENTIRE 35TH FLOOR — 6,780 SF



BUILDING FEATURES:

- Modern construction with floor-to-ceiling windows and efficient building systems (DX Water cooled units on each floor)
- Artwork from the William Louis-Dreyfus Foundation on display in lobby
- New market-leading tenant-only amenities including:
 - **Fitness Facility:** Open 24/7 with Peloton bikes, yoga studio, free weights, cardio equipment, and strength training equipment. Men's and women's locker rooms include saunas and towel service.
 - **Conferencing Center:** Large 22-person boardroom, extra perimeter seating, serving pantry, and soft seating area.
- Accessible location with 3 subway lines (6, E, M) within 1 block, walking distance to Grand Central and LIRR East Side Access

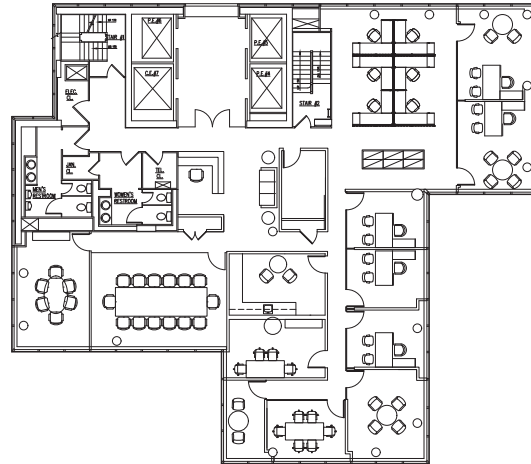
SPACE FEATURES

600
LEX

FLOOR PLANS

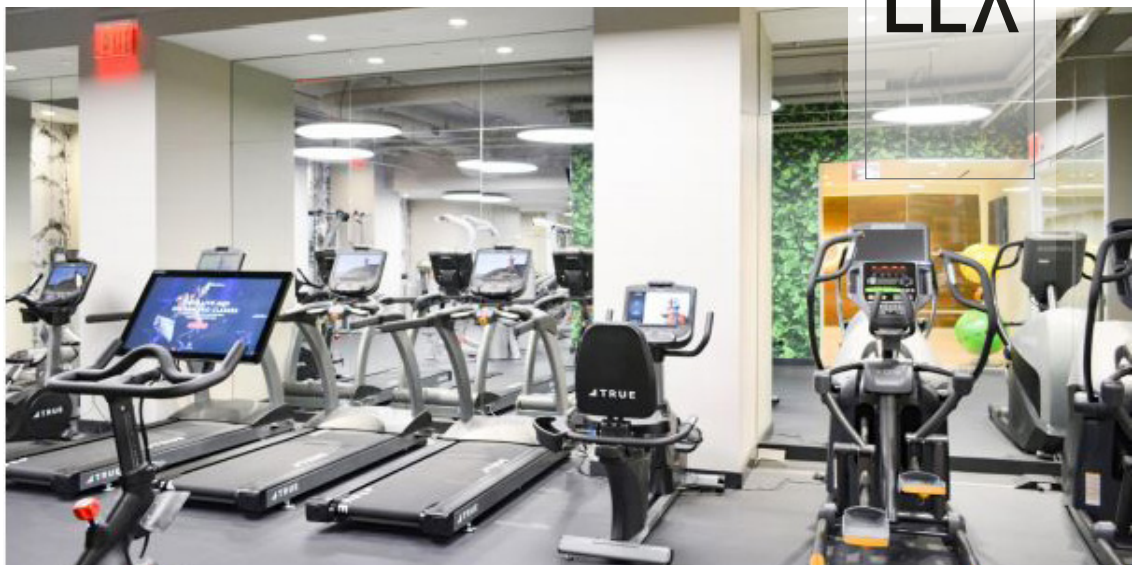
ENTIRE 35TH FLOOR - 6,780 SF

- Skyline views in all four directions
- Boutique, full floor opportunity
- Floor-to-ceiling windows
- Efficient side core floor plate with ability to create five corner offices
- New prebuilt pending



AMENITIES

600
LEX



NEIGHBORHOOD MAP

600 LEX

