

29  
30<sup>th</sup>

West  
Street

Located in  
NoMad  
Newly Built & Furnished for Lease

---

Entire 5<sup>th</sup> Floor 6,800 RSF

29  
30<sup>th</sup>

West  
Street

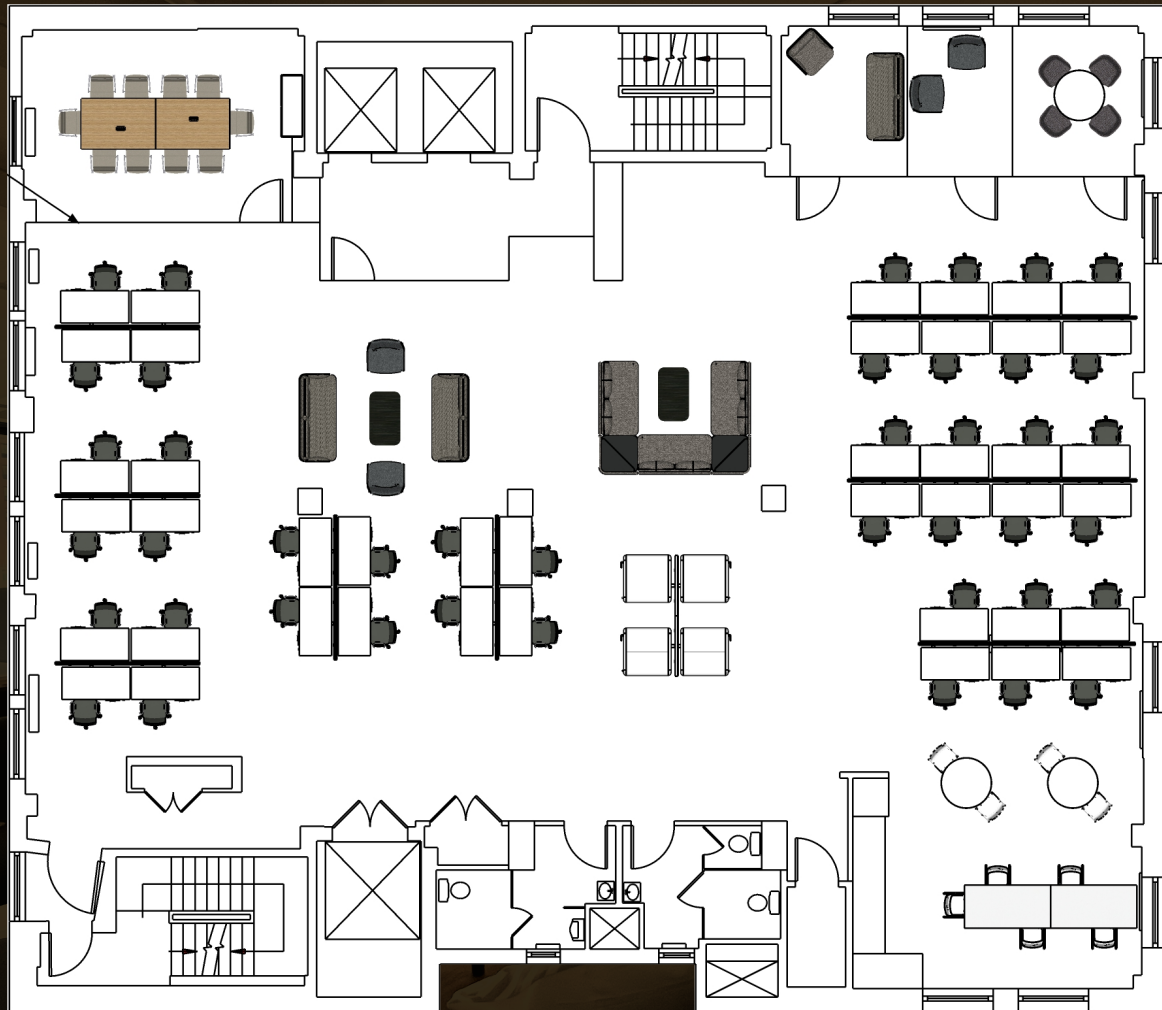
## High-End Identity Suites

- Sundrenched floors with great natural light on three sides
- Brand new creative installations with high ceilings, new wood flooring, all new bathrooms, pantries, operable windows, LED lighting, and new tenant-controlled ductless HVAC
- Sub-metered electric
- Two over-sized passenger elevators/One freight
- Attended lobby with 24 hour card key access
- Key tenants: Core Power Yoga, WeWork, Heartwork, and Rottet Studios

## NOMAD Location

- Conveniently located within a five minute walking distance from Penn Station with easy connections to the LIRR, New Jersey Transit, The PATH train, and six subway lines.
- NOMAD has become a hotspot for Manhattan's luxury boutique hotels, new developments and several critically acclaimed restaurants, chic nightlife, and world-class entertainment sites.

## Floor Plans



**Entire 5<sup>th</sup> floor: 6,800 RSF**

**Includes furniture:**

- Open plan with Forty-two (42) adjustable desks with room to add additional desks
- Six (6) huddle conference areas with (4) being enclosed
- Four (4) Brand new bathrooms 2 stalls each
- Open plan for 42 adjustable desks with room to grow
- Open pantry with Cafe seating
- Four (4) Phone booths

**29  
30<sup>th</sup>**

**West  
Street**

# The Space



29  
30<sup>th</sup>

West  
Street

