

20 EAST 46TH STREET

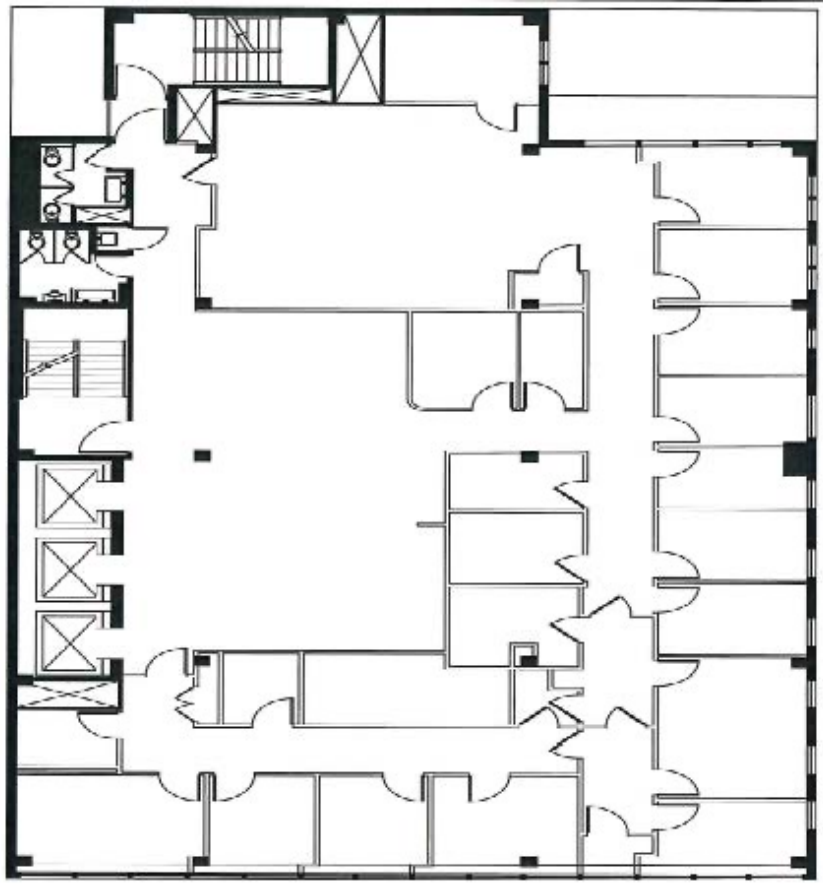
Between Fifth And Madison Avenues



Unit	SF	Space Features
E 7	6,856	Fully built, furnished and equipped medical office space
<div><div>Building Features<ul style="list-style-type: none">• 24/7 Access with attended lobby• Central Air Conditioning• New lobby, new elevators, new air conditioning system• Upgraded bathrooms and hallways• Diverse Tenant roster including many medical specialties</div><div>Ideal for Medical / Dental Offices</div></div>		

20 EAST 46TH STREET

Between Fifth And Madison Avenues



ENTIRE 7TH – 6,856 RSF

- Fully built medical offices in absolute move in condition
- 12 exam rooms with full millwork, 7 with sinks
- 3 Executive offices
- Procedure room
- Lab & utility room
- Staff lounge
- 4 new bathrooms
- Large waiting and office area
- Large Physical Therapy area
- Tenant Controlled HVAC