



600 LEX



PARTIAL 4TH FLOOR — 6,856 SF



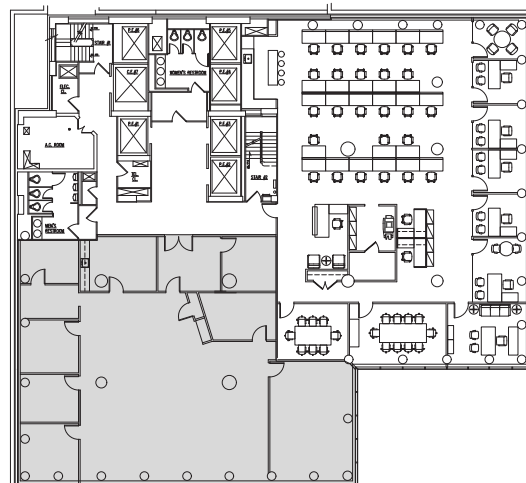
BUILDING FEATURES:

- Modern construction with floor-to-ceiling windows and efficient building systems (DX Water cooled units on each floor)
- Artwork from the William Louis-Dreyfus Foundation on display in lobby
- New market-leading tenant-only amenities including:
 - **Fitness Facility:** Open 24/7 with Peloton bikes, yoga studio, free weights, cardio equipment, and strength training equipment. Men's and women's locker rooms include saunas and towel service.
 - **Conferencing Center:** Large 22-person boardroom, extra perimeter seating, serving pantry, and soft seating area.
- Accessible location with 3 subway lines (6, E, M) within 1 block, walking distance to Grand Central and LIRR East Side Access

FLOOR PLAN

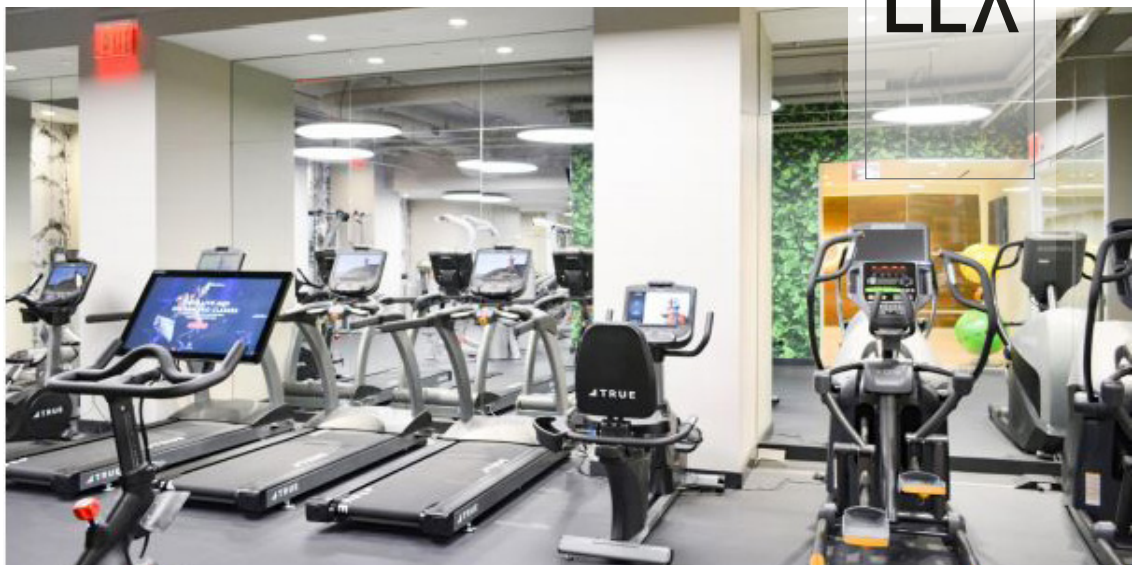
PARTIAL 4TH FLOOR - 6,856 SF

- New prebuilt pending
- Floor-to-ceiling windows



AMENITIES

600
LEX



NEIGHBORHOOD MAP

600 LEX

