

FOR SUBLEASE

2 GRAND

CENTRAL TOWER

PARTIAL 11TH FLOOR
6,943 RSF



POSSESSION
Immediate



ASKING RENT
Upon Request



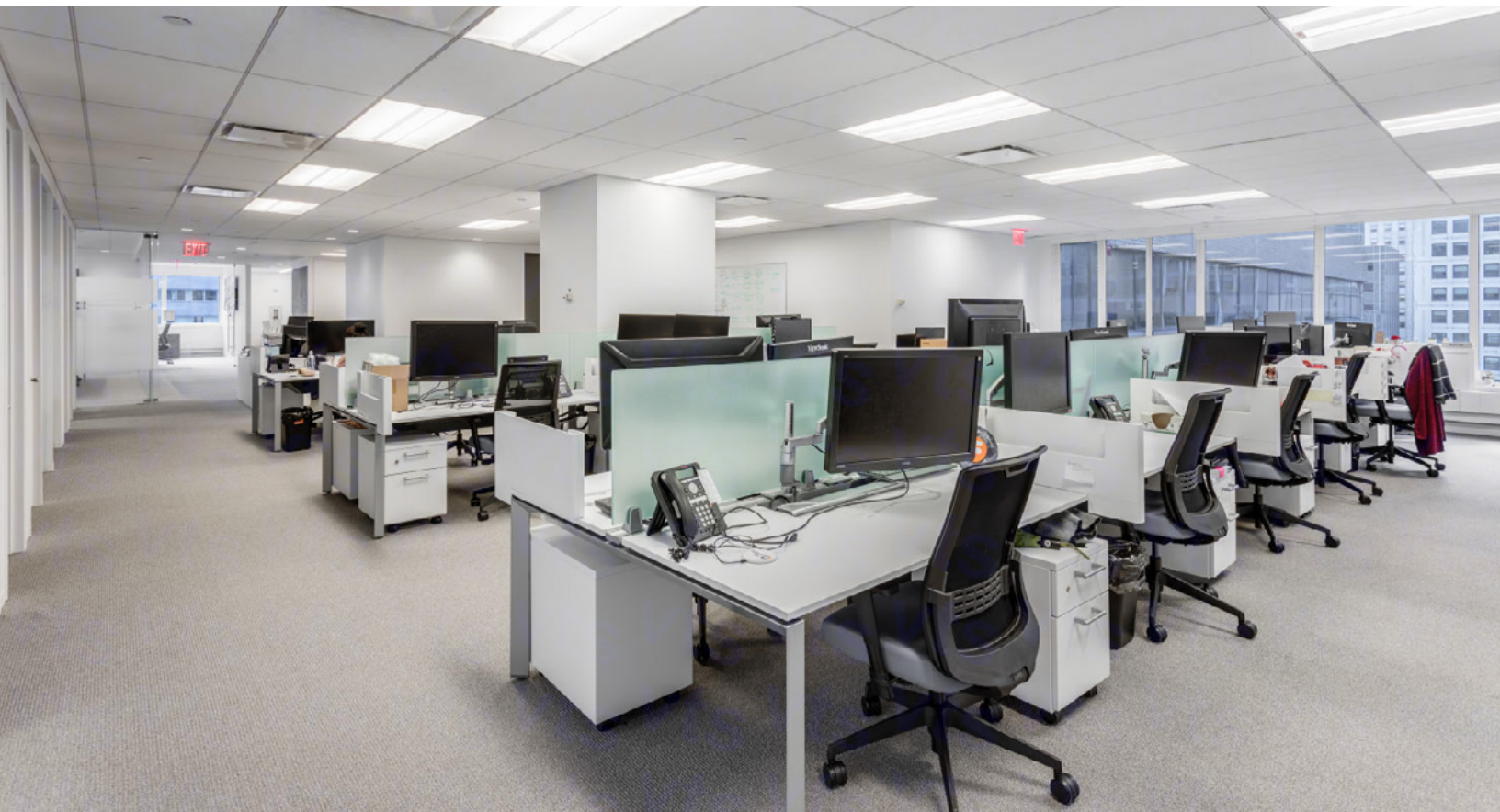
TERM
MAY 2024

2 GRAND

CENTRAL TOWER

SPACE FEATURES

- Partial 11th Floor
6,943 RSF
- Built, furnished and wired with four sides of windows
- High end build out currently with:
 - Reception
 - Boardroom
 - Conference room
 - 30 workstations in the open area
 - 5 offices
 - Pantry
 - IT room



2 GRAND

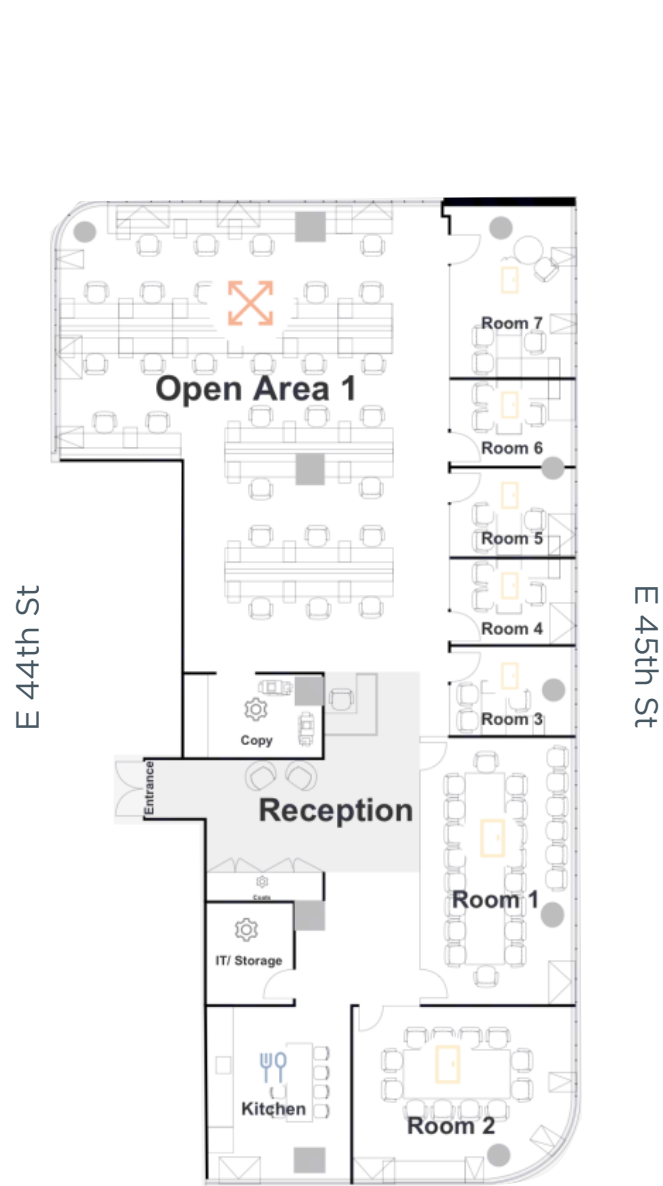
CENTRAL TOWER








2 GRAND

CENTRAL TOWER

PARTIAL 11TH FLOOR 6,943 RSF



BUILDING FEATURES

- Entrances on 44th & 45th Streets
- Steps from Grand Central Terminal & retail hub with access to     subways,  Metro-North Railroad, and M101, M102, M103, M1, M3, M4, Q32, and M42 buses

2 GRAND

CENTRAL TOWER

