

11

PENN PLAZA

LAST REMAINING FLOOR

ENTIRE FOURTH FLOOR

61,139 RSF

ASKING RENT

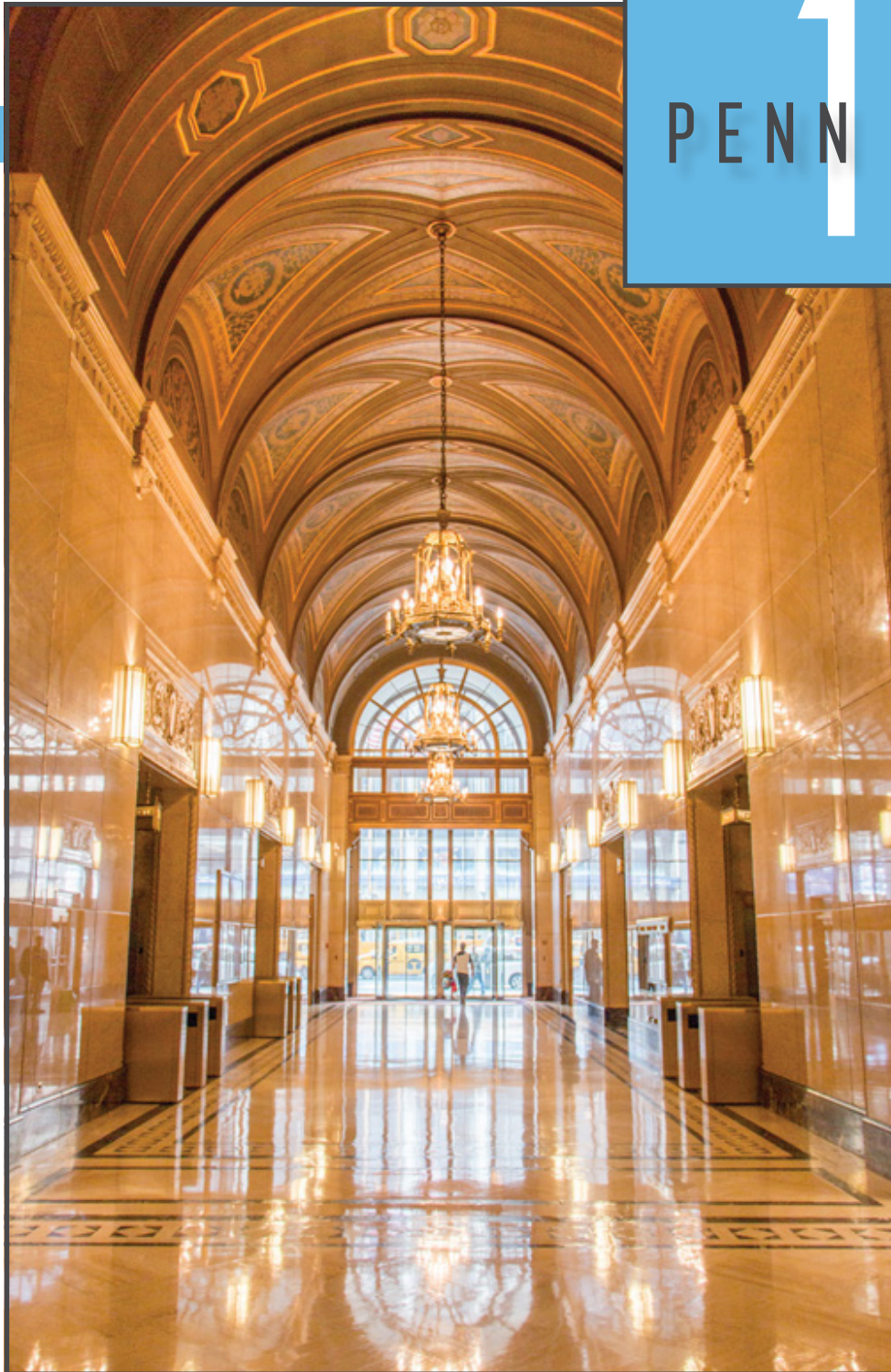
Upon Request

TERM

Through April 30th, 2035

COMMENTS

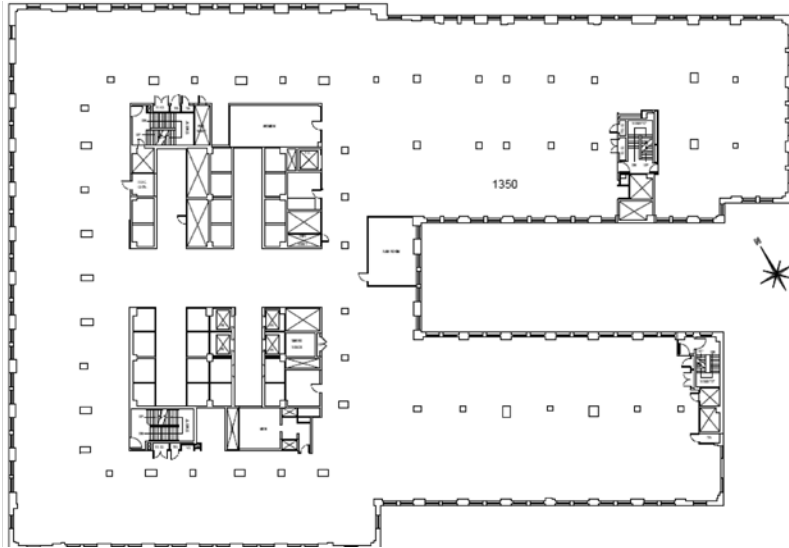
- Floor features 5 sides of windows and approximately 14' ceiling heights
- Steps from Penn Station (A C E 1 2 3) NJ TRANSIT MTA Long Island Rail Road and Herald Square (N Q R W B D F M) PATH
- Major office tenants include: Madison Square Garden, AMC Networks and Macy's
- Telecom: Verizon/ XO Communications, Cogent, MCI/ Verizon Business, Everest Broadband, Time Warner Cable, Light Tower, Cablevision
- On-site messenger center



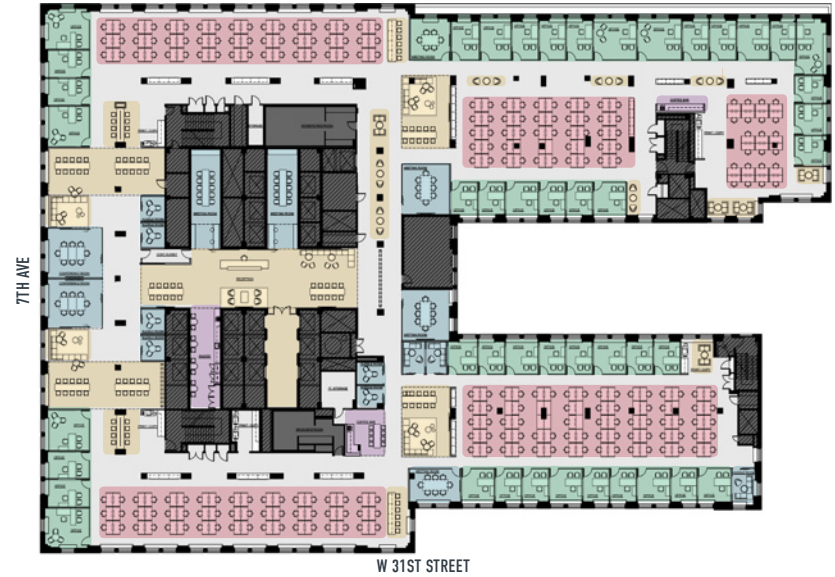
ENTIRE 4TH FLOOR | 61,139 RSF CORE & SHELL PLAN + TEST FITS*

[*REPRESENTATIVE FULL-FLOOR MARKETING TEST FITS]

CORE AND SHELL PLAN | 61,139 RSF



ADVERTISING AGENCY | HEADCOUNT 293+



PROFESSIONAL SERVICES FIRM | HEADCOUNT 322+



TECH COMPANY | HEADCOUNT 390+



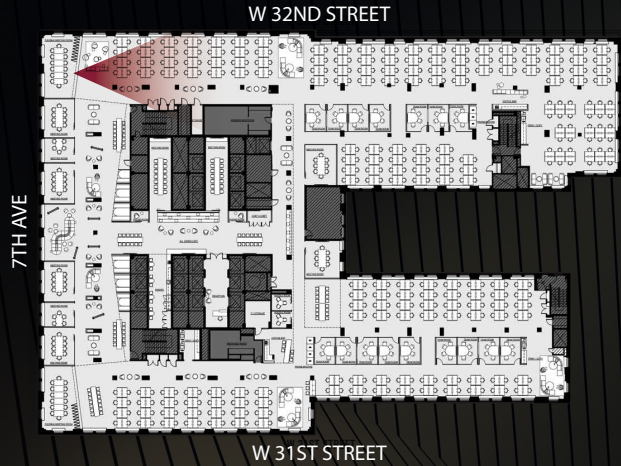
RENDERING | RECEPTION



RENDERING | MEETING + COLLABORATION



RENDERING | OPEN WORKSPACE



11 PENN PLAZA

