

256 West 38th Street | Penn Plaza



Location

Between Seventh and Eighth Avenues

Premises

Entire 12th Floor **7,500 RSF**

Availability

Immediate

Term

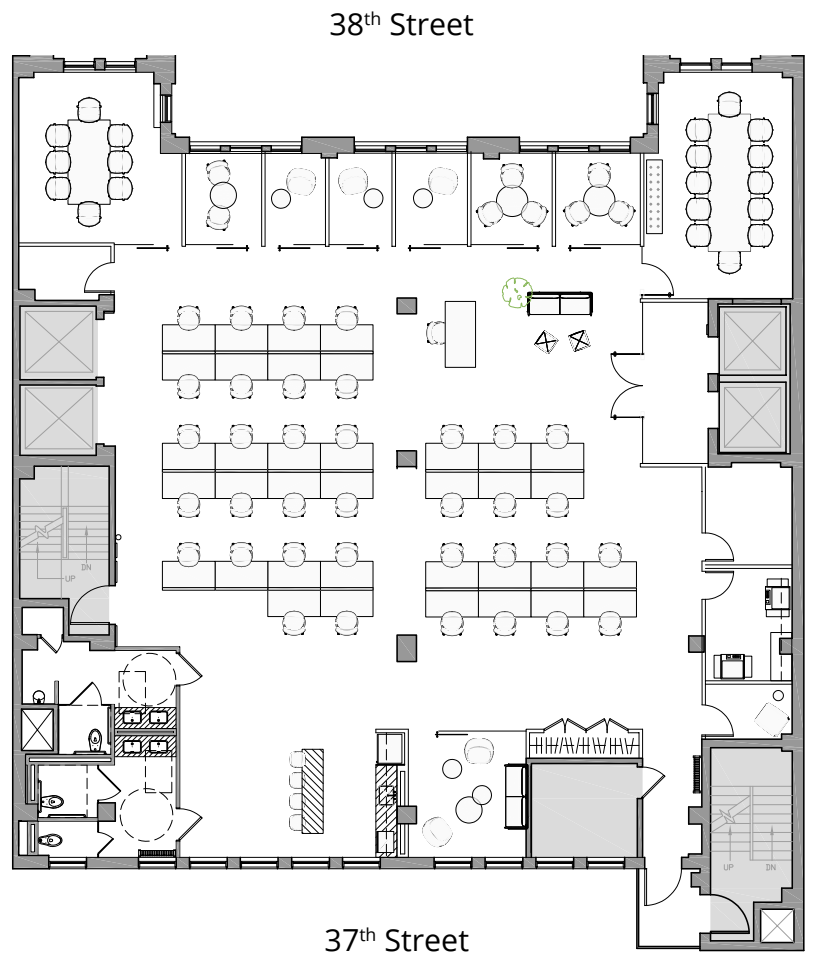
Negotiable

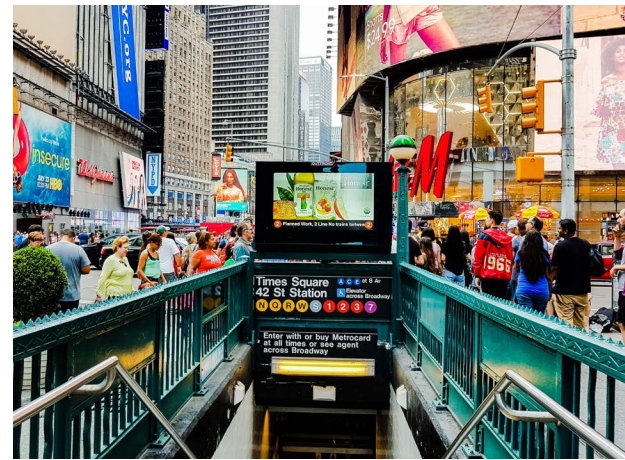
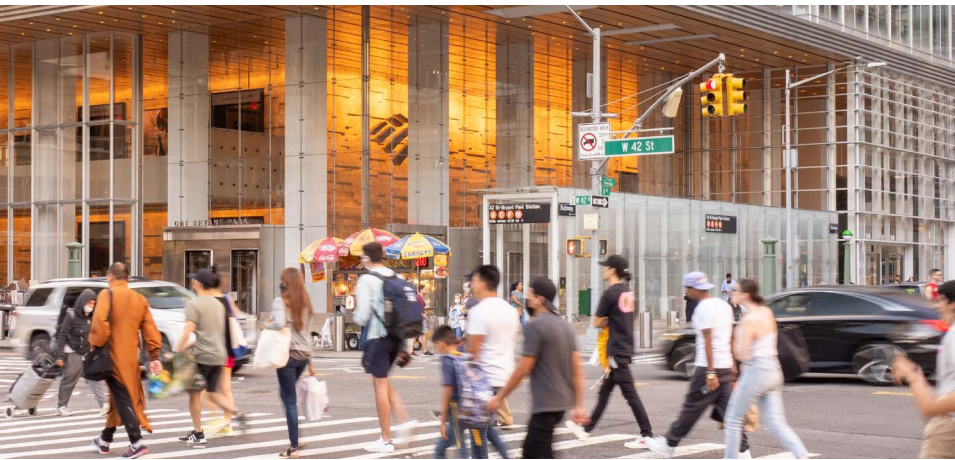
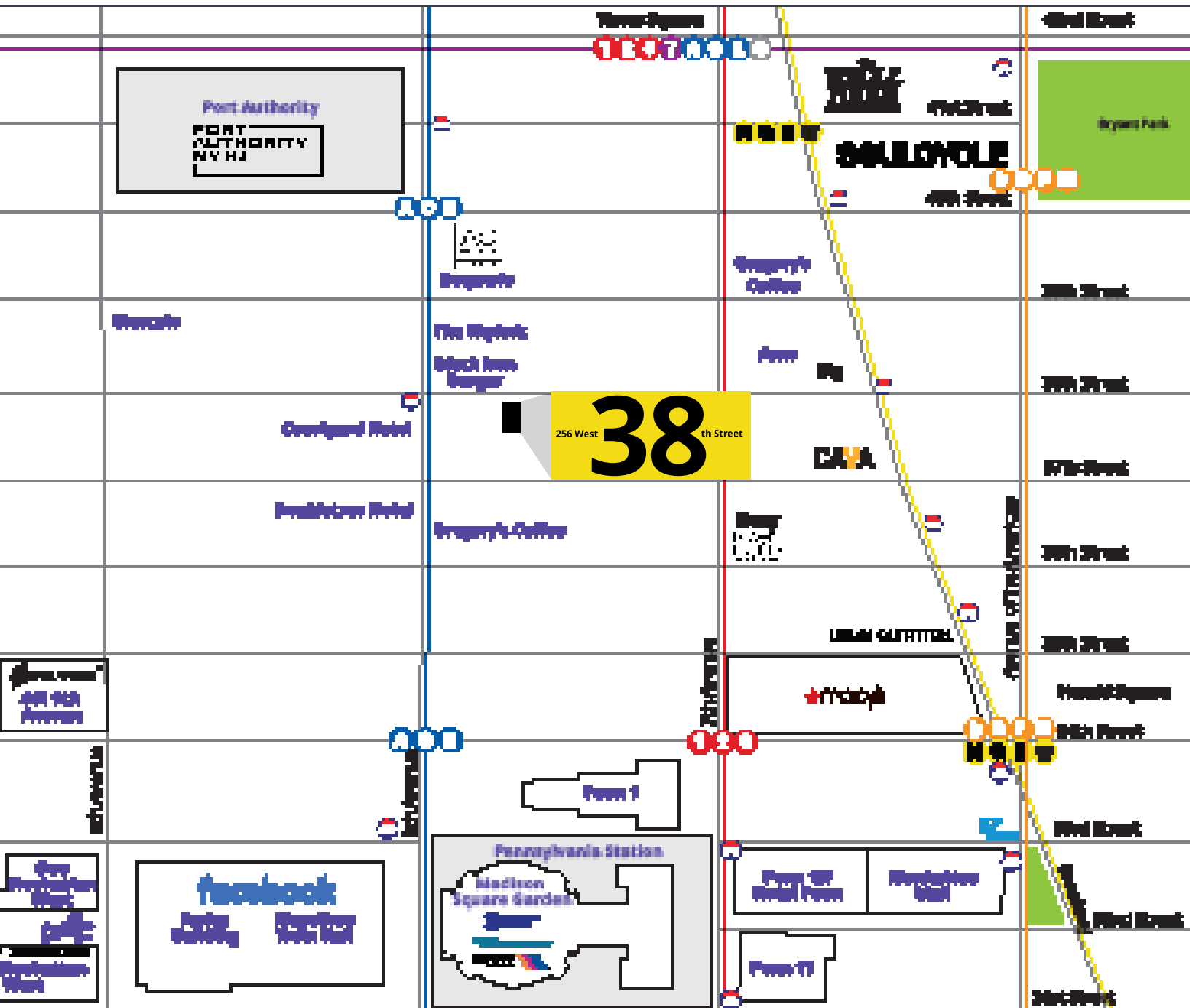


12th floor | 7,500 RSF

- Brand new white-box space
- Polished concrete floors
- Exposed ceilings
- High-end prebuilds will include:
 - Polished concrete floors
 - Glass office fronts
 - New, modern wet pantries
 - LED lighting
- New ADA compliant restrooms

Test fit





256 West **38**th Street | Penn Plaza

Building highlights

- Newly renovated entry and lobby with 24-hour access
- Upgraded elevators and bathrooms on all floors
- Full-floor presence with operable windows
- Tenant controlled AC

Furniture can be made available upon request

