

# 645

---

## FIFTH AVENUE

---

Partial 3rd Floor | 7,560 SF  
Term: Through Sept. 30, 2029  
Will consider a 6,502 RSF division

---







645

FIFTH  
AVENUE

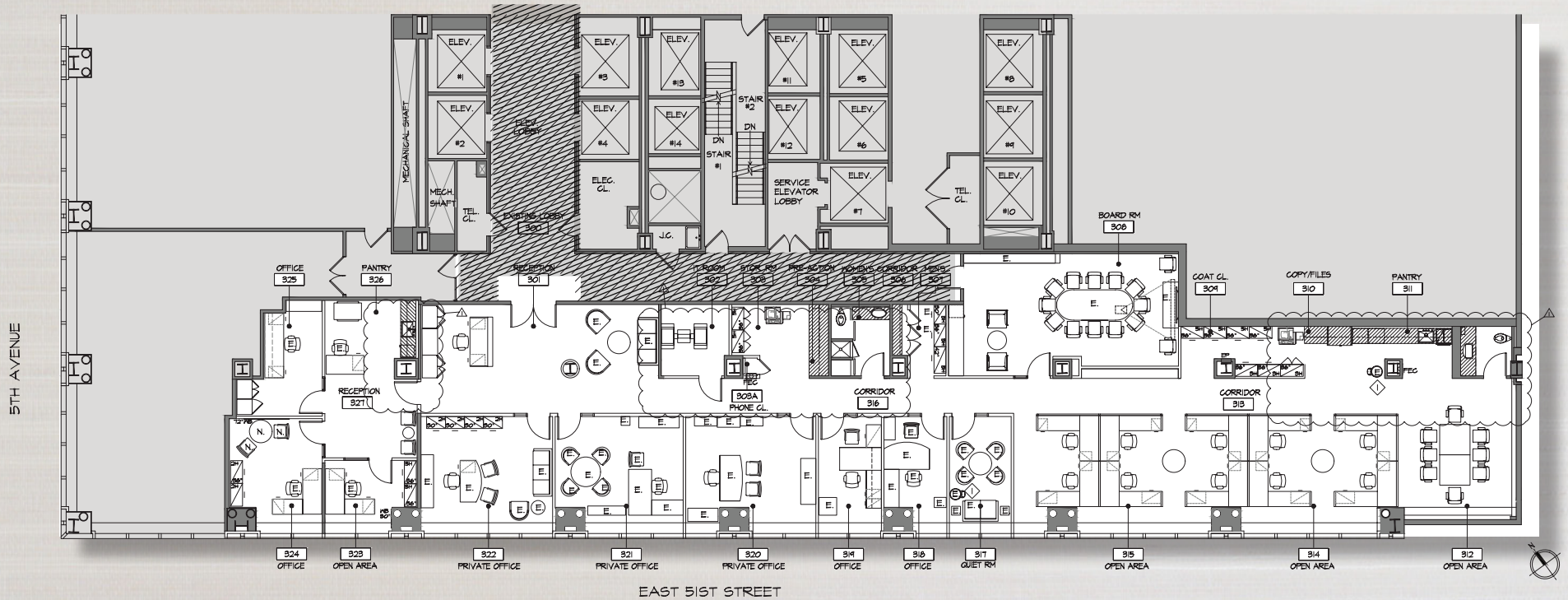
## SPACE FEATURES

- Newly Built Space
- Wired space; furniture can be made available
- Amazing Views of St. Patrick's Cathedral and Fifth Avenue
- 4 Large, Windowed Executive Offices
- 4 Small, Windowed Associate Offices
- Large Internal Conference Room
- 10 Large Workstations
- 2 Private internal offices
- Large reception, storage & IT/Copy rooms
- In-unit restroom & in-unit shower

# 645

## FIFTH AVENUE

Partial 3rd Floor | 7,560 SF  
Term: Sept. 30, 2029

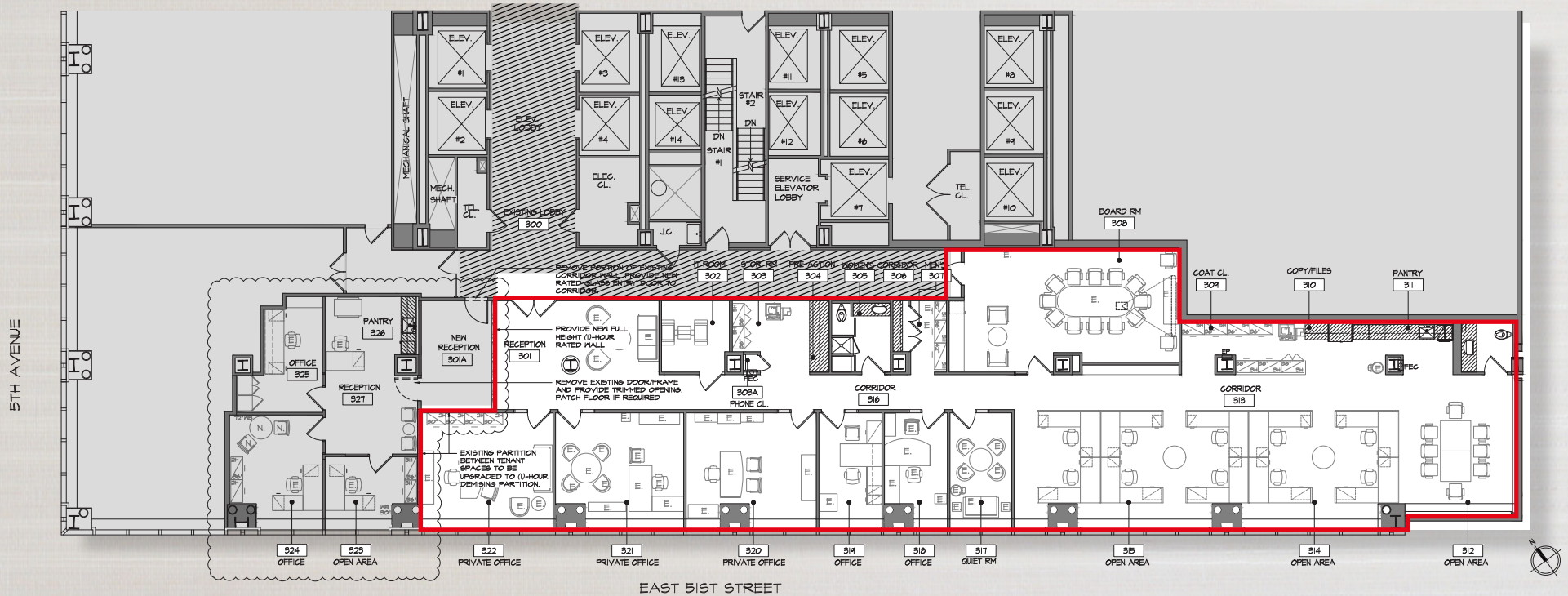




# 645

## FIFTH AVENUE

Division Scenario | 6,502 SF  
Term: Sept. 30, 2029



# 645

---

FIFTH  
AVENUE

Partial 3rd Floor | 7,560 SF  
Term: Sept. 30, 2029

