

Existing Conditions

1001 Avenue of the Americas

Northwest corner of West 37th Street

Move-In Ready – For Immediate Occupancy
New Prebuild – Entire 7,566 RSF Tower Floor
Private Terrace – Exceptional Light and Views

Short Walk to Times Square, Penn Station, Grand Central and
Bryant Park **A C E 1 2 3 B D F M 7 N Q R W** subway lines and 



Northeasterly View

Full floor presence on tower floor - 3-Sides of operable windows and terrace offering incredible natural light and views

Entire 23rd Fl: 7,566 rsf

Possession: Immediate

Rent: Call or email for info

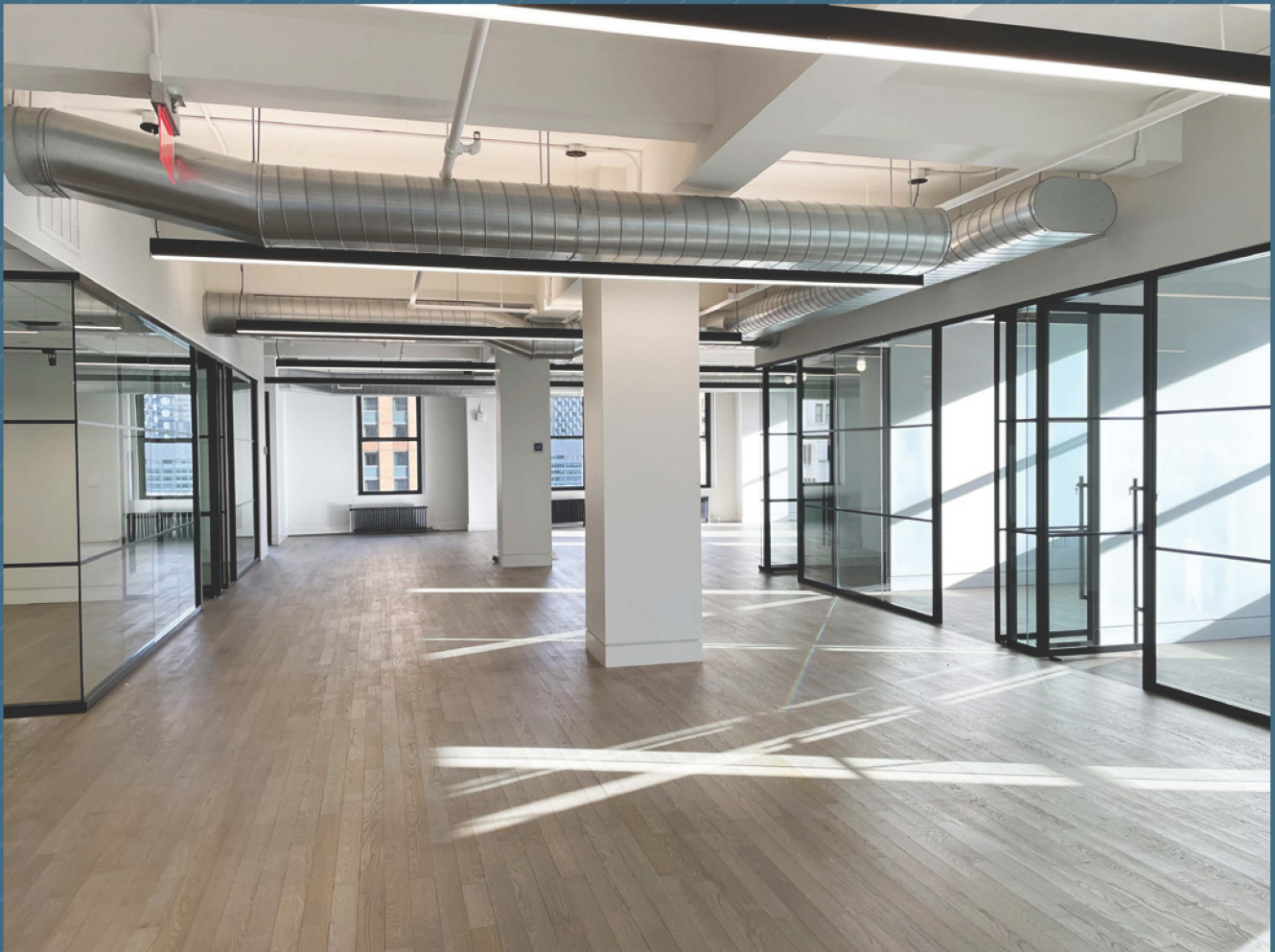
Brand new, move-in ready prebuild on entire tower floor featuring private terrace, hardwood floors throughout, and three sides of operable windows offering exceptional light and views

Features:

- Windowed glass-front conference room, multiple offices, three breakout rooms, as well as a glass-front interior meeting room
- Bright open area, full pantry with seating/lounge area, reception area, and private men's and women's bathrooms plus one ADA bathroom
- Reasonable rents, flexible terms, stable long-term ownership
- Corner building with multiple fiber providers, tenant-controlled A/C, and 24/7/365 access
- Fantastic transportation access — walk to Times Square, Penn Station, Grand Central Terminal, Bryant Park, Port Authority Bus Terminal, and Moynihan Train Hall transportation hubs

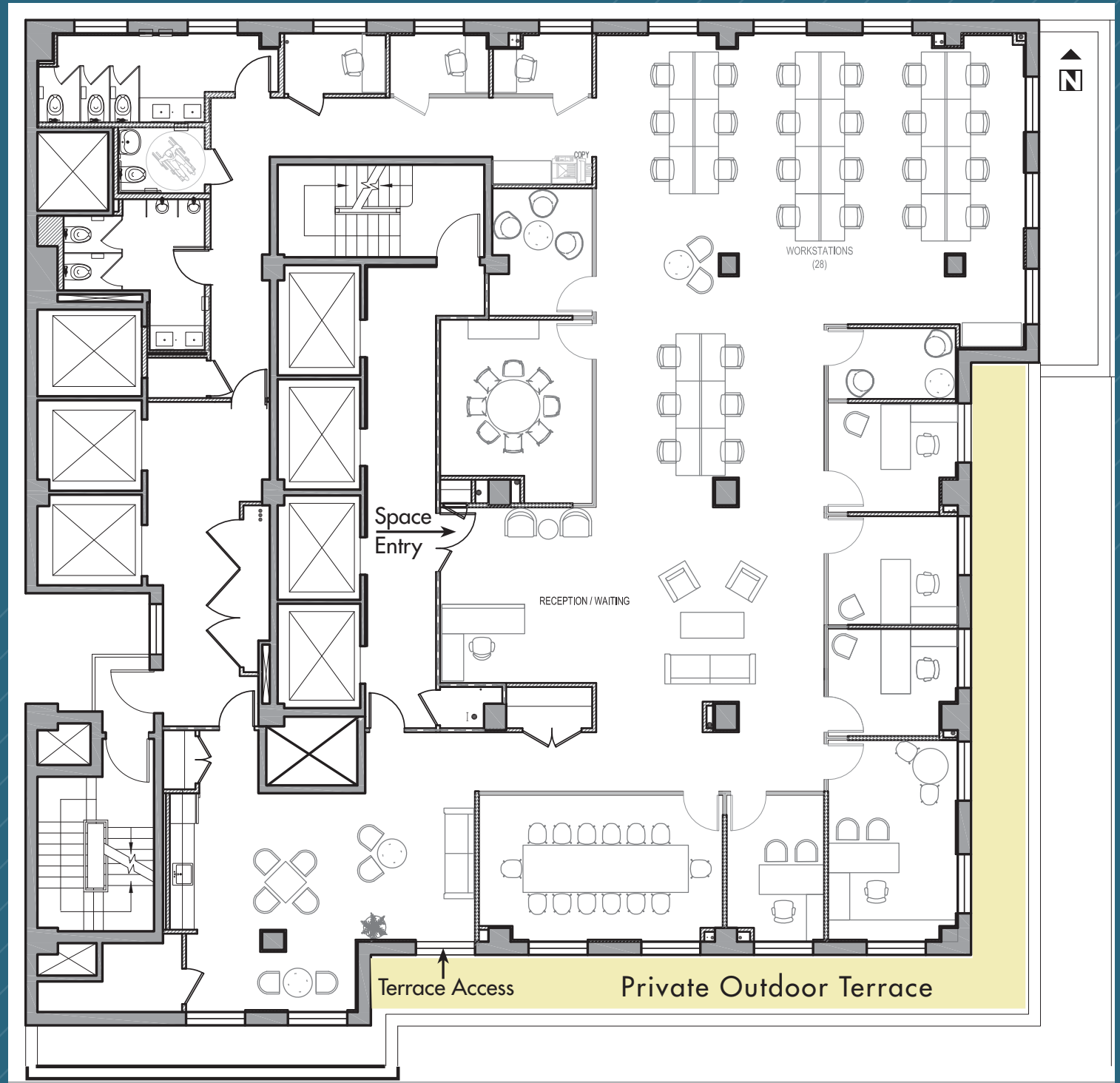








ENTIRE 23RD FLOOR - 7,566 RSF
(AS-BUILT)



(for descriptive purposes only; not to scale.)

