

# 8<sup>TH</sup> AVENUE

LONG-TERM TURN-KEY  
SUBLEASE 2 BLOCKS  
FROM PENN STATION





**LOUNGE / EVENT AREA**



**OFFICES**



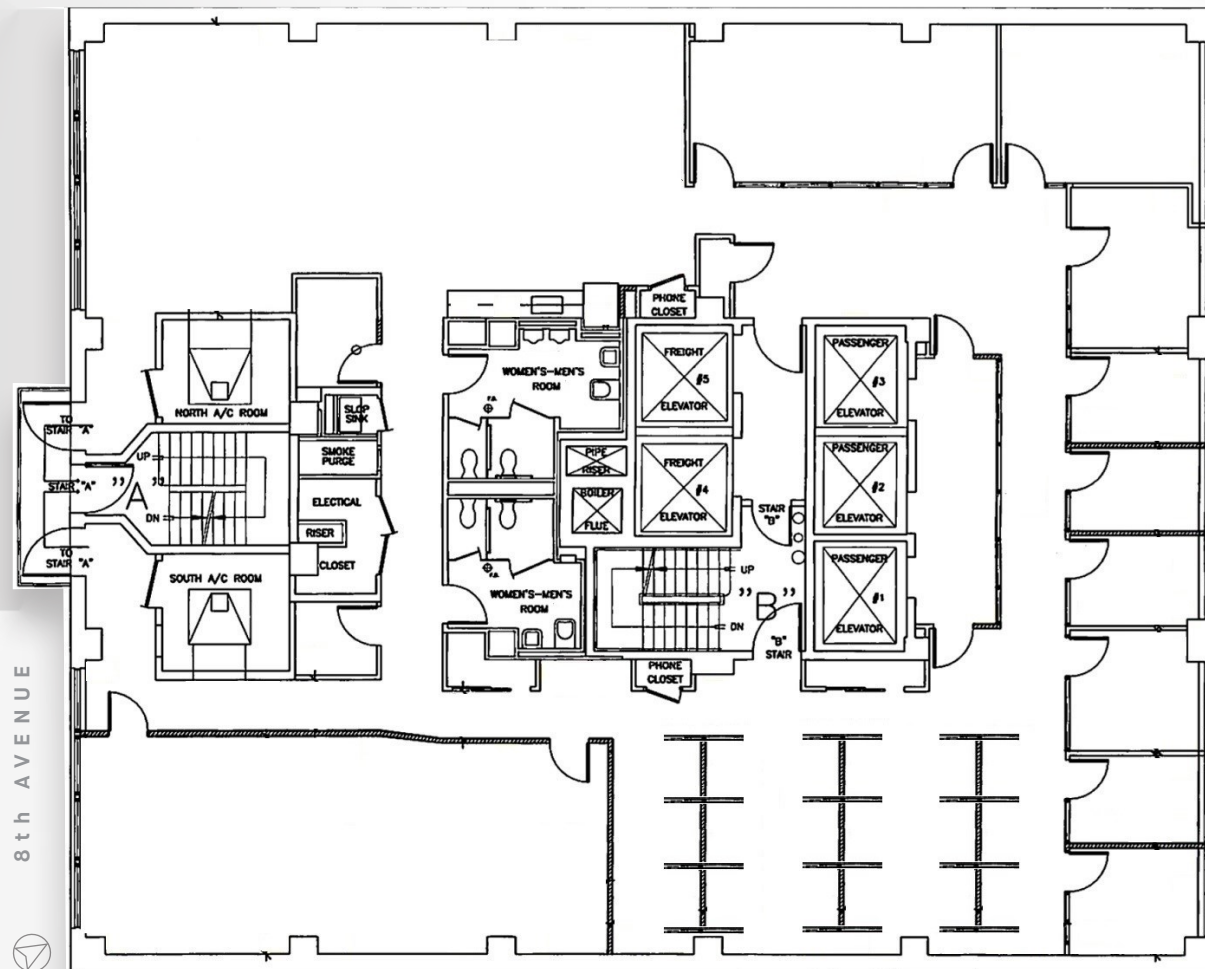
CONFERENCE ROOM

ENTIRE 3RD FLOOR

# 7,882 RSF

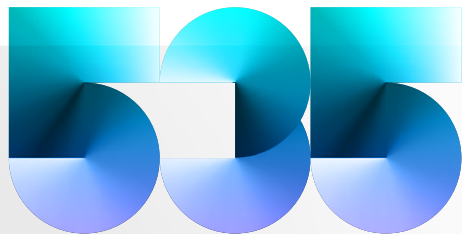
Possession: Dec 1, 2022

Sublease Term: Oct 31, 2029



## COMMENTS:

- Newly constructed installation
- Credit sublandlord
- Spacious lounge/event area
- Key pad security and elevator lock-off
- Eight private offices
- Two conference rooms
- Full floor presence



**8TH AVENUE**