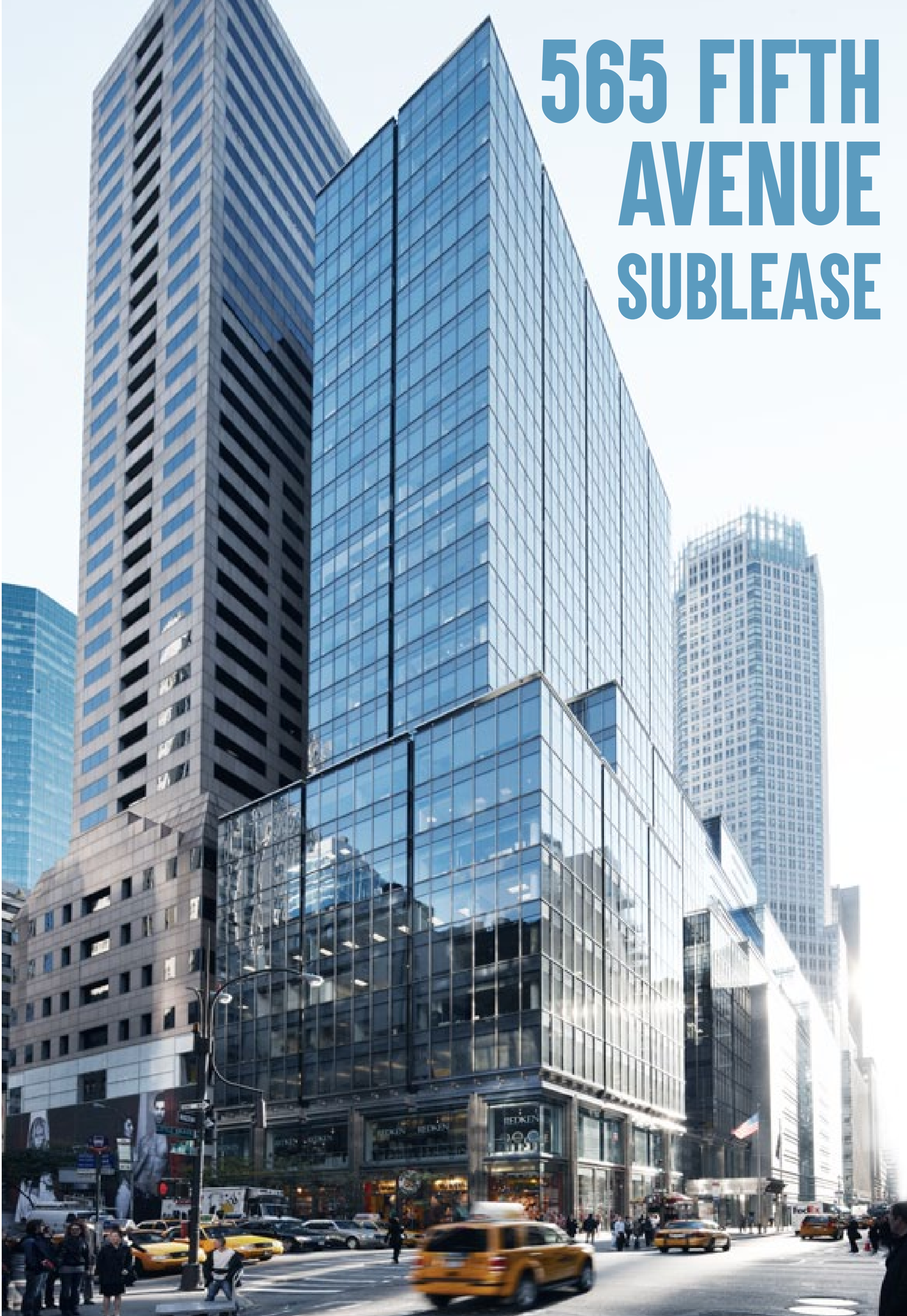


565 FIFTH AVENUE SUBLEASE



PREMISES.

Partial 21st Floor
7,074 RSF

TERM.

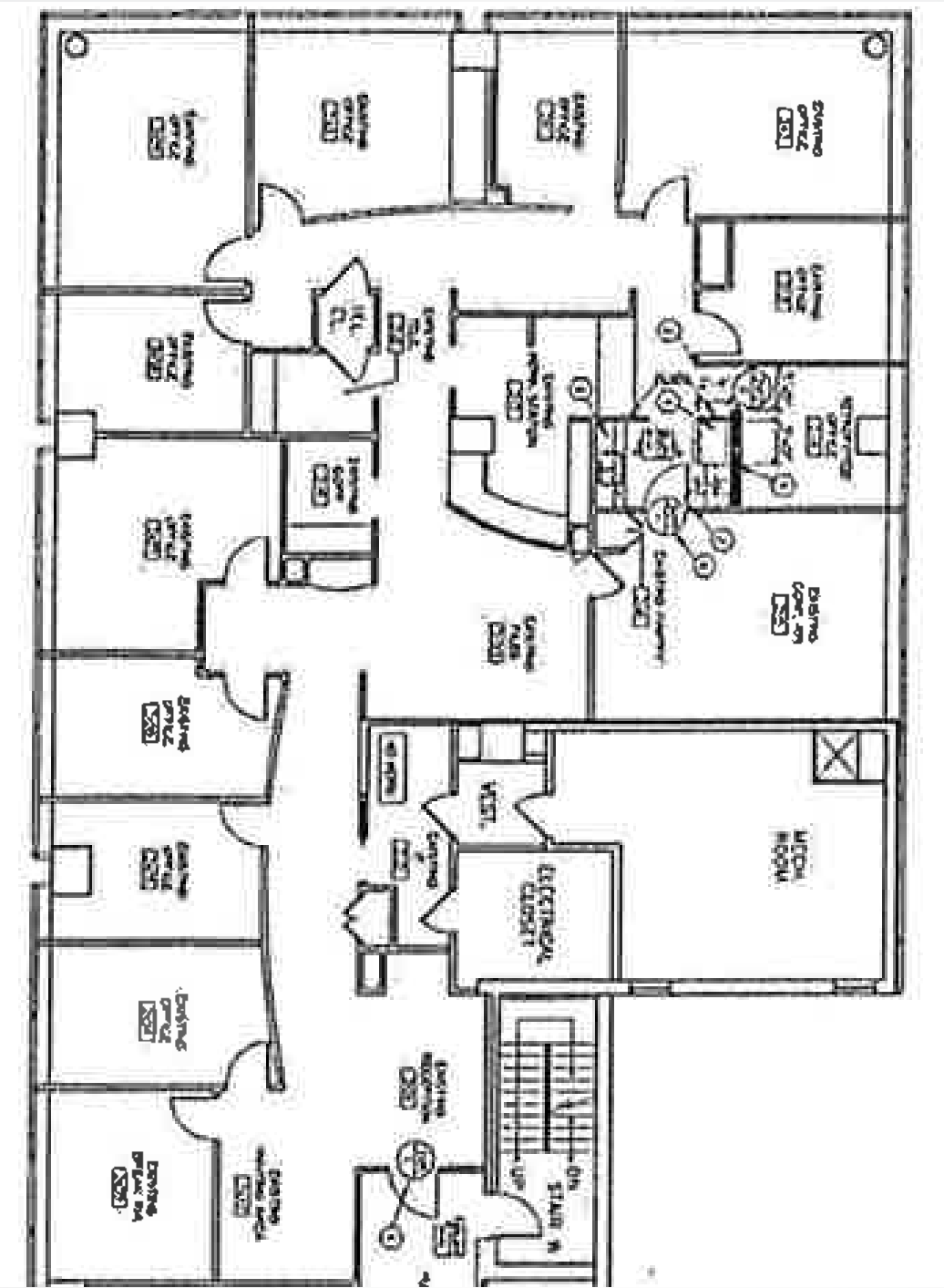
Thru 6/29/2024

POSSESSION.

Immediate

ASKING RENT.

Upon Request



FEATURES

- + Outstanding light and views
- + Mix of offices and conference rooms
- + All furniture and fixtures are available
- + Great location steps away from Bryant Park, Rockefeller Center and Grand Central Terminal



