



## PARTIAL FLOOR 10 7,324 SF



SOUTHWEST VIEW



OPEN WORK AREA WITH PANTRY

### AVAILABILITY

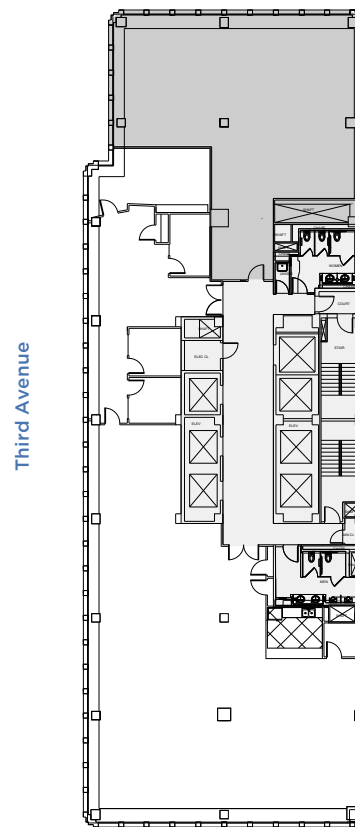
- Built Space
- Corner Unit

### PROPERTY FEATURES

- Building-wide window and perimeter induction unit replacement program completed in 2019
- Green roofs and exclusive outdoor terraces
- Outdoor plaza featuring a zinc green wall
- Renovated lobby
- LEED Silver certified under LEED v4 Existing Buildings: Operations + Maintenance

### AS-BUILT PLAN

East 43<sup>rd</sup> Street



East 42<sup>nd</sup> Street