

PRIME LOCATION • PREMIER ADDRESS



Space Profile

Size: **7,536 SF**

Floor(s): **Partial 9th**

Rate: **Upon request**

Availability: **Immediate**

Term: **Through January 2026**

Key Highlights

- Contains 12 perimeter offices, 4 interior offices, 1 conference room, 1 pantry and reception.
- Furniture can potentially be available.
- Ideal for law firms and accounting partnerships.

SUBLEASE 1251 Avenue of the Americas - Mitsui Building | Between 49th & 50th Sts

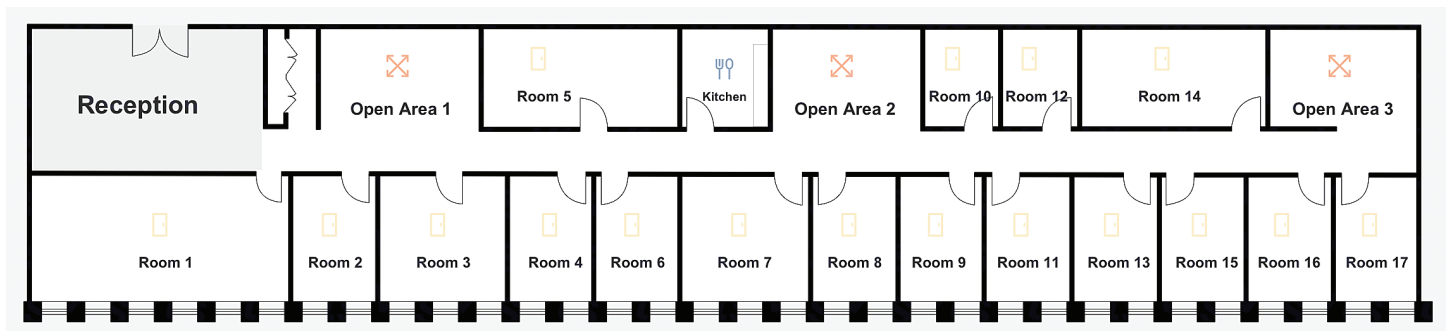


SUBLEASE 1251 Avenue of the Americas - Mitsui Building | Between 49th & 50th Sts



SUBLEASE 1251 Avenue of the Americas - Mitsui Building | Between 49th & 50th Sts





Space Overview

- 12** perimeter offices
- 4** interior offices
- 1** conference room
- 1** pantry and reception

