



TURNKEY SOHO OFFICE SPACE

LOCATION: 625 Broadway

PREMISES: 12th Floor

SIZE: 8,085 RSF

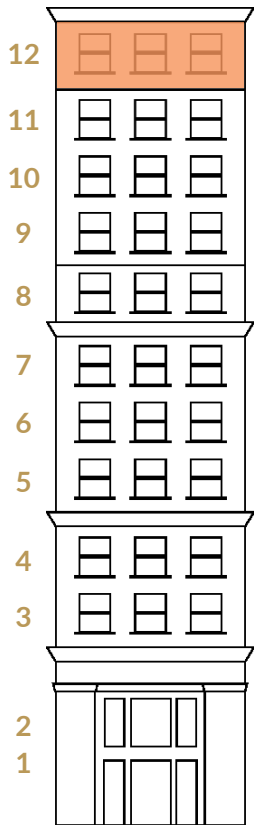
TERM: Flexible

POSSESSION: Arranged

RENT: Negotiable

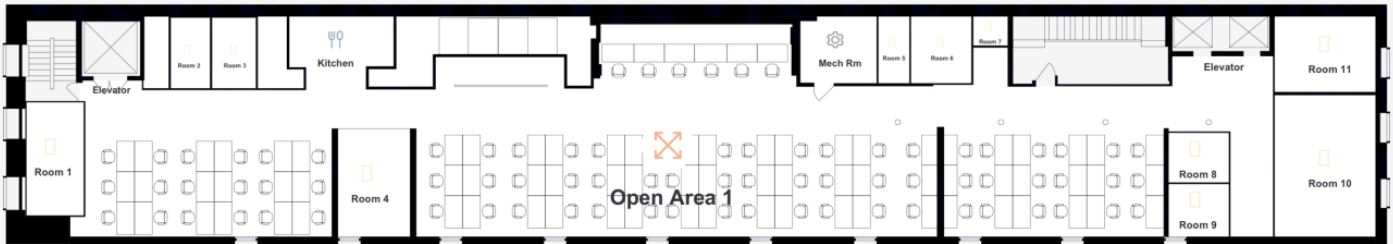
SPACE NOTES

- Existing office installations with multiple meeting rooms, breakout areas, private phone booths and soft lounge seating
- Open space to accommodate flexible headcounts
- Fully equipped kitchen with appliances and private restrooms (ADA compliant)



COVID-19 SAFETY PROVISIONS

- Operable windows with cross-ventilation
- New HVAC air-cleansing ionizer unit to eliminate dust, bacteria, pollen and other allergens
- Ease of access with multiple paths due to 2 separate entry and exits
- Secure stairwell access for added ingress/egress
- Landlord will modify the existing installation to comply with safety protocols for tenants
- Continuous cleaning of all high-touch common areas in the building
- Enhanced lobby air filtration



625 Broadway

625 Broadway
12th Floor, Suite 1200
New York, NY
8,085 RSF



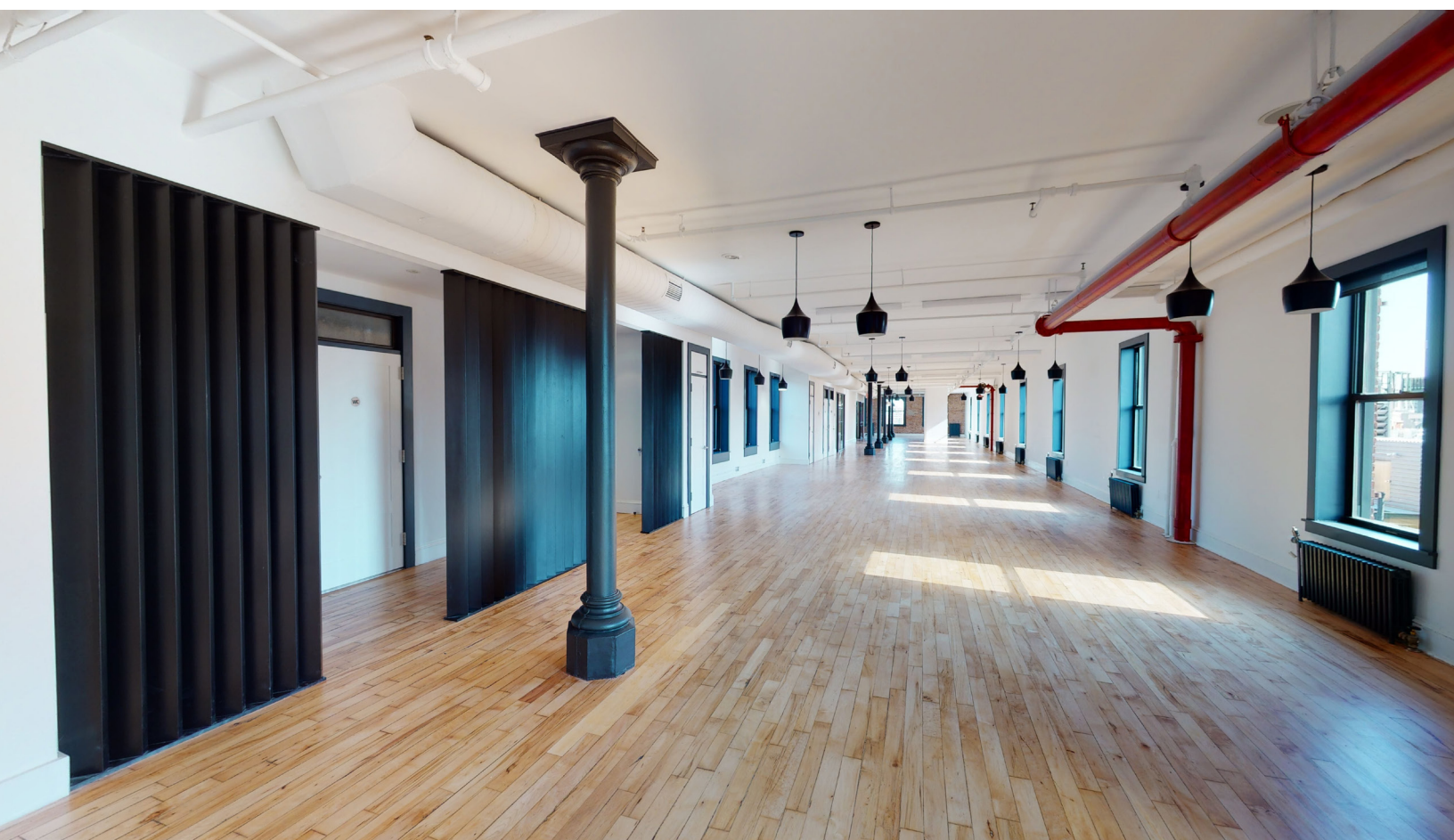
Space
✂ 8,085 RSF

Work Areas	QTY
✂ Open Area	1
📄 Rooms	11

Common Areas	QTY
🍴 Kitchen	1
⚙ Utility Areas	1

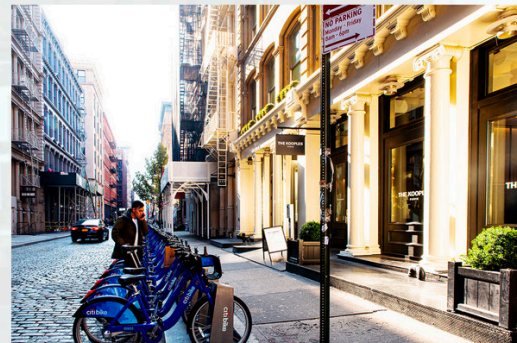
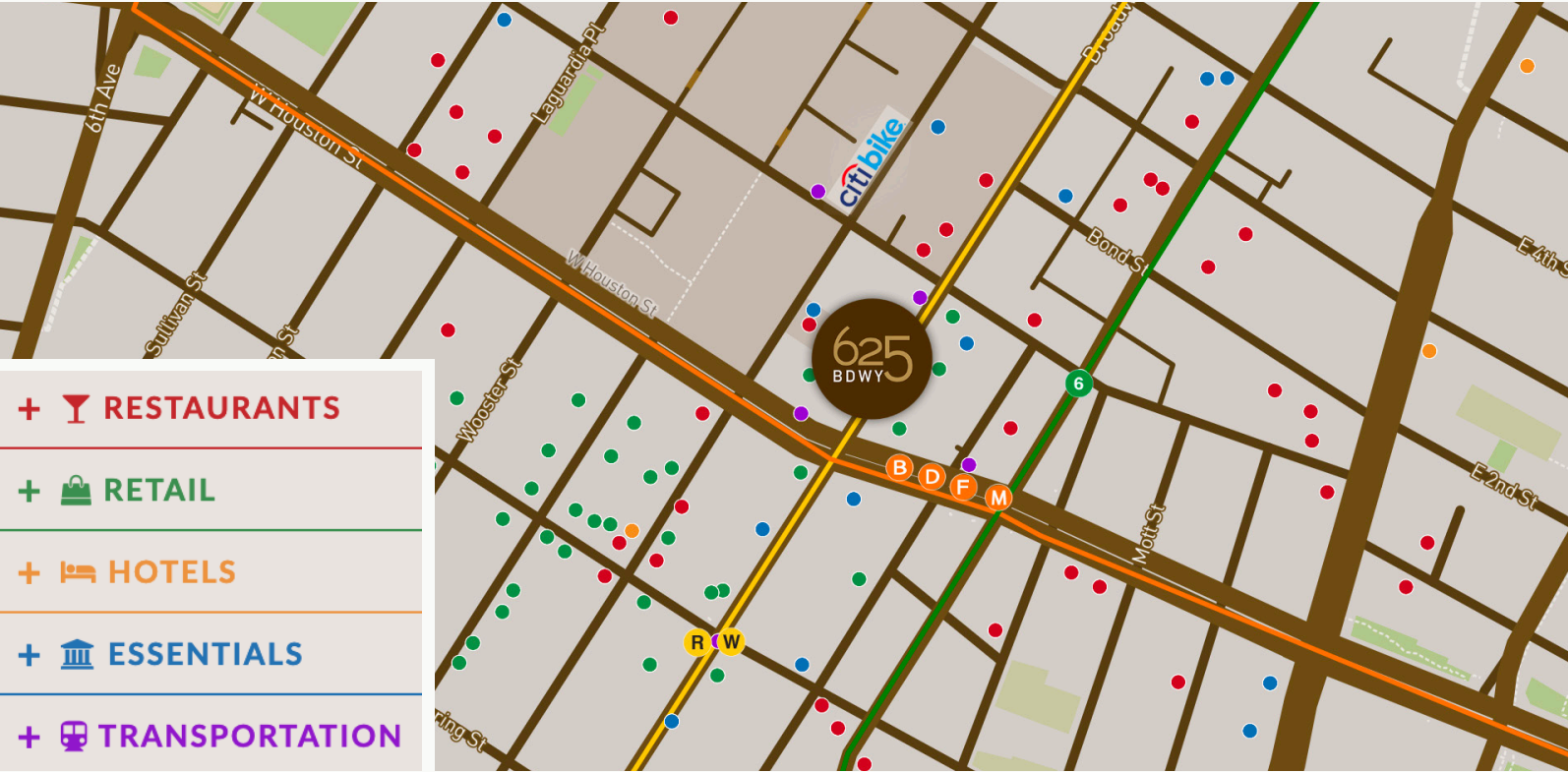






625 BDWY

NEIGHBORHOOD



NEWLY RENOVATED LOBBY

