



7

## BRYANT PARK

---

New Construction  
on the Park





# AVAILABILITY

**PARTIAL 15TH FLOOR:** 8,109 RSF

Condition: Built

Possession: Arranged

---

## SPACE + BUILDING FEATURES

- ◆ Column-free tower floors
- ◆ Floor-to-ceiling, 10-foot wide windows
- ◆ Slab heights of 14'–15'
- ◆ Efficient side-core floor plates
- ◆ Direct access to the B/D/F/M/7 and close proximity to 1/2/3/A/C/E subway stations. 10-minute walk from Grand Central and Penn Station, and 7-minute walk to Port Authority





# PARTIAL 15TH FLOOR

8,109 RSF — Existing Installation





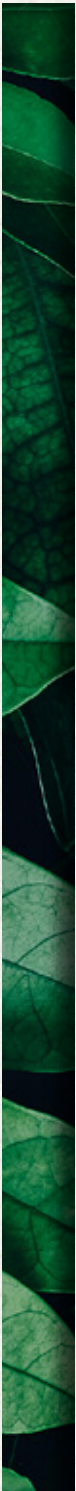
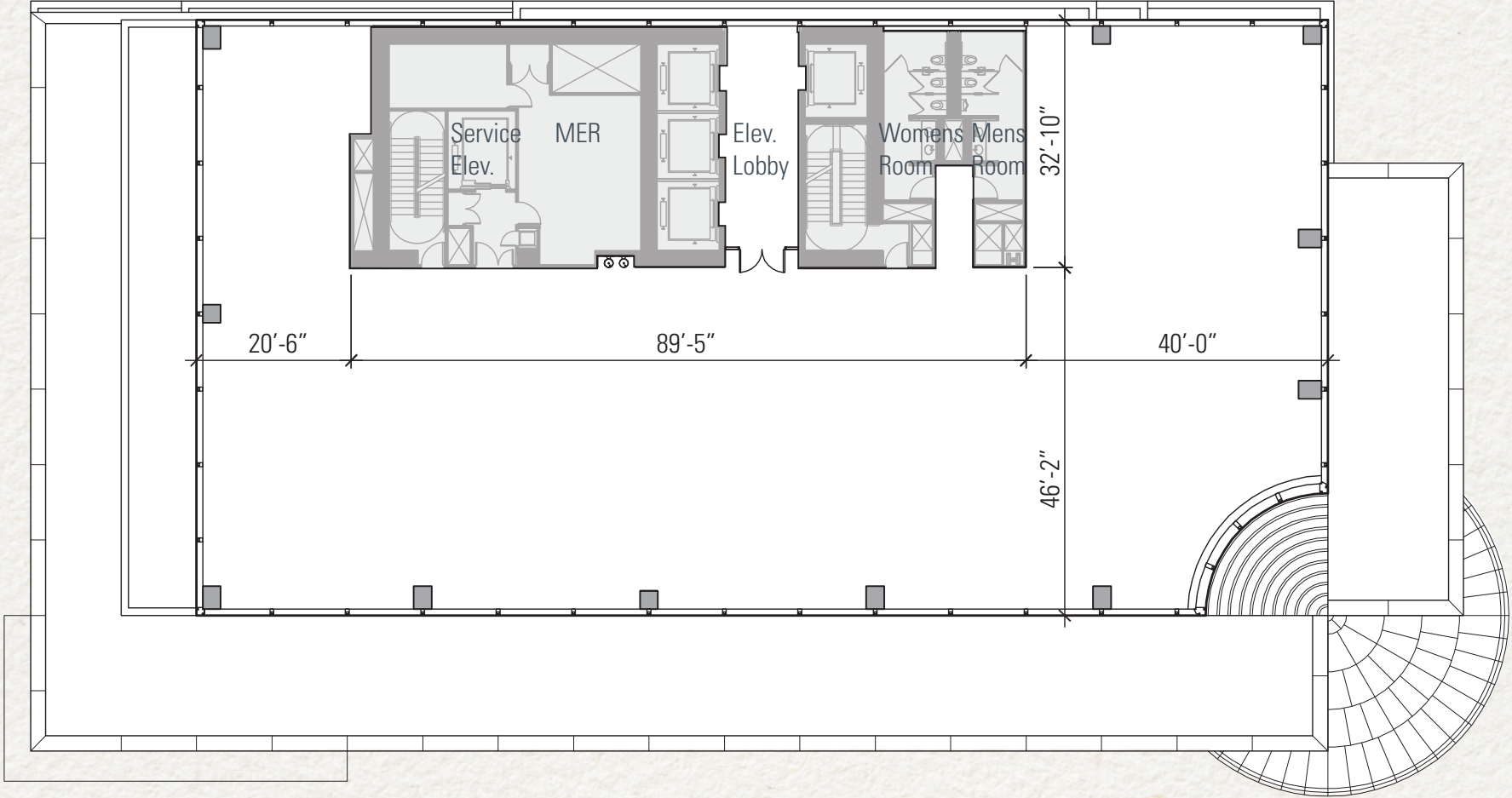
# UNOBSTRUCTED PANORAMIC VIEWS

---





# TYPICAL HIGH RISE CORE + SHELL PLAN





# TYPICAL HIGH RISE - FULL FLOOR SAMPLE TEST FITS

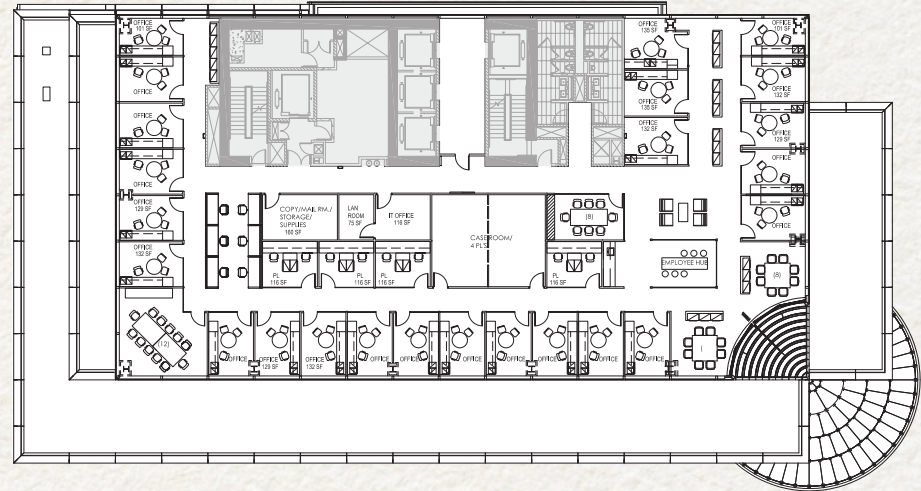
---

## OFFICE/LEGAL

**Offices:** 28

**Workstations:** 6

**Conference Rooms:** one, 12-person; one, 8-person

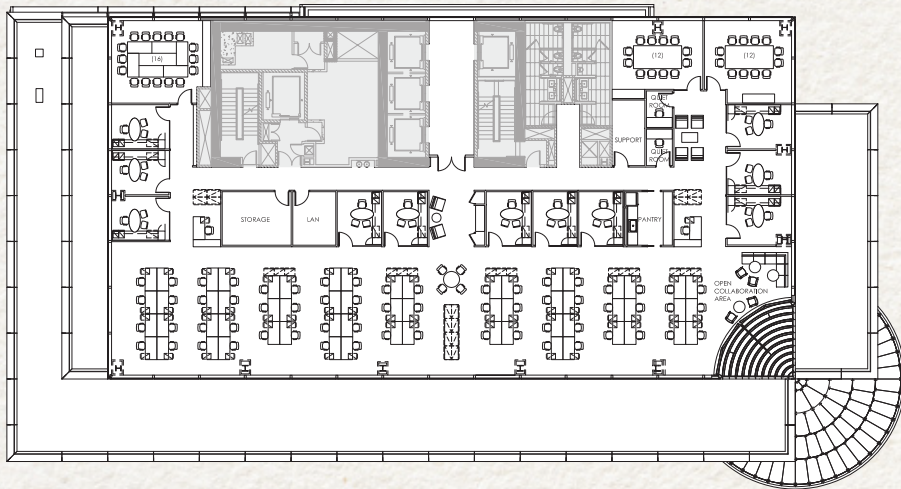


## HEDGE FUND

**Offices:** 11

**Workstations:** 70

**Conference Rooms:** one, 16-person; two, 12-person

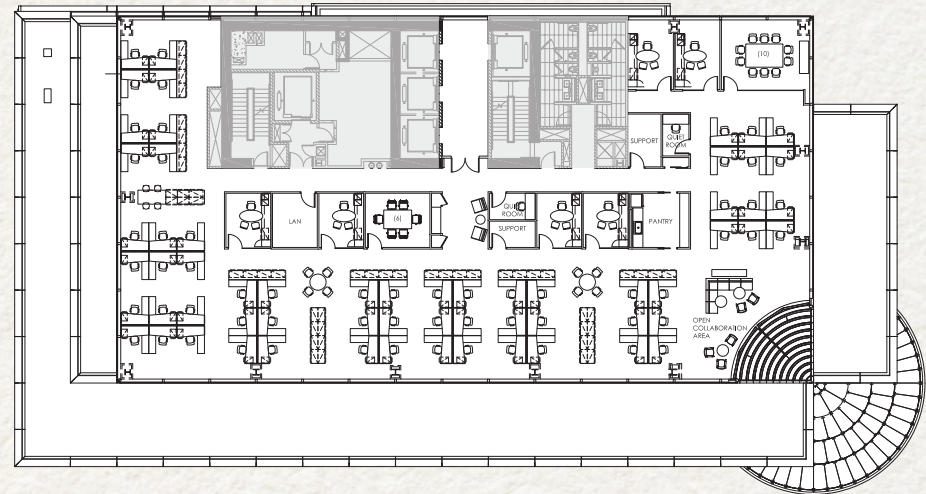


## OPEN PLAN

**Offices:** 6

**Workstations:** 62

**Conference Rooms:** one, 10-person; one, 6-person





# PARTIAL 15TH FLOOR

8,109 RSF — Existing Installation

**Offices:** 4

**Workstations:** 33

**Conference Rooms:** two, 4-person; one, 16-person

