

**ENTIRE 17<sup>TH</sup> FLOOR 8,577 RSF**

Prebuilt & Build-to-Suit Availabilities





## BUILDING FEATURES

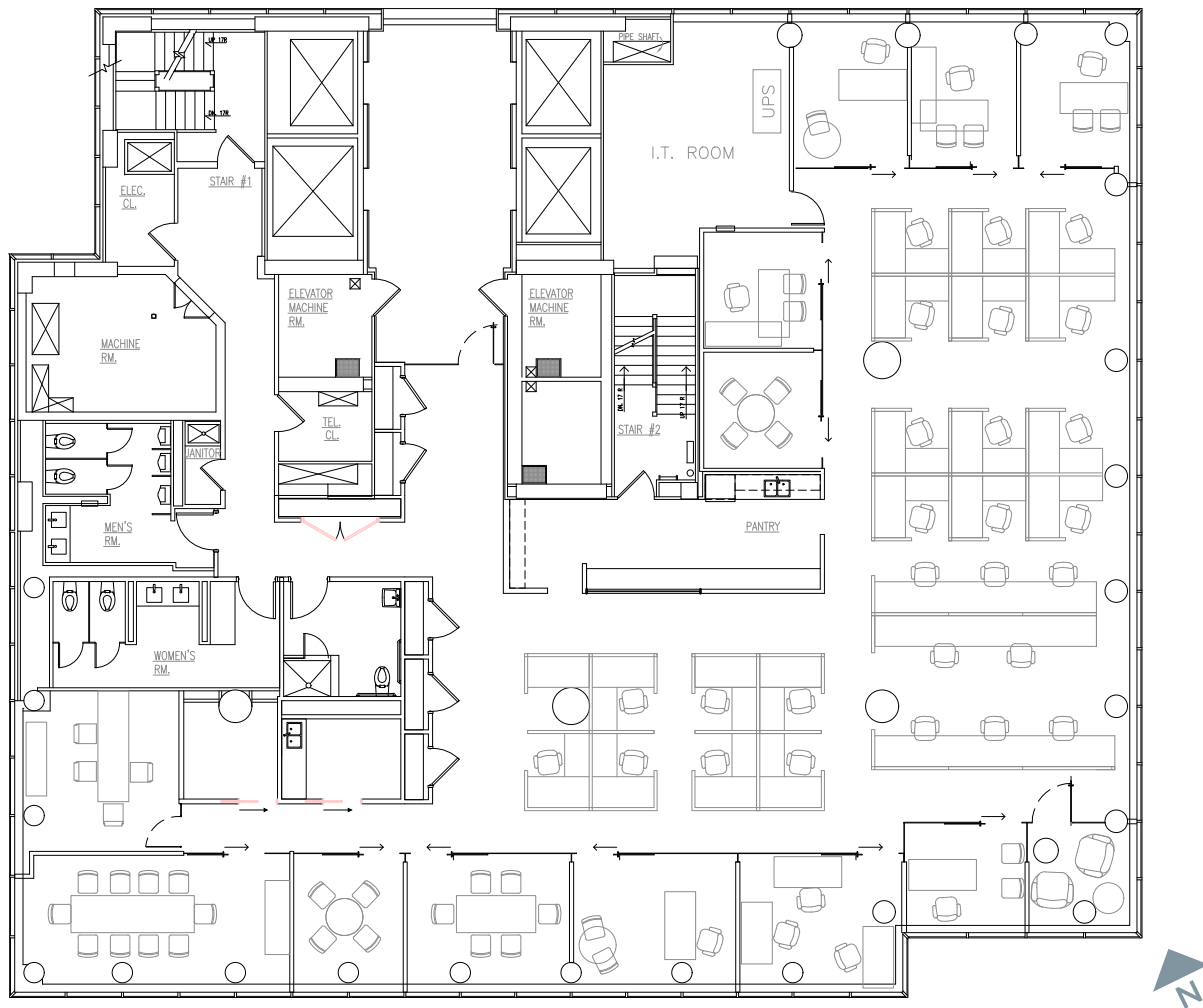
- New market-leading tenant-only amenities including:
  - **Fitness Facility:** Open 24/7 with Peloton bikes, yoga studio, free weights, cardio equipment, and strength training equipment. Men's and women's locker rooms include showers and towel service.
  - **Conferencing Center:** Large 22-person boardroom, extra perimeter seating, serving pantry, and soft seating area
- Accessible location with 3 subway lines **6** **E** **M** adjacent to property
- Walking distance to



- Artwork from the William Louis-Dreyfus Foundation on display in lobby
- Modern construction and efficient building systems
- WiredScore GOLD certification

# ENTIRE 17<sup>TH</sup> FLOOR

## 8,577 RSF



### SPACE FEATURES

- Available 6/1/2022
- Full floor opportunity
- Move-in condition that can be modified
- Furniture can be made available

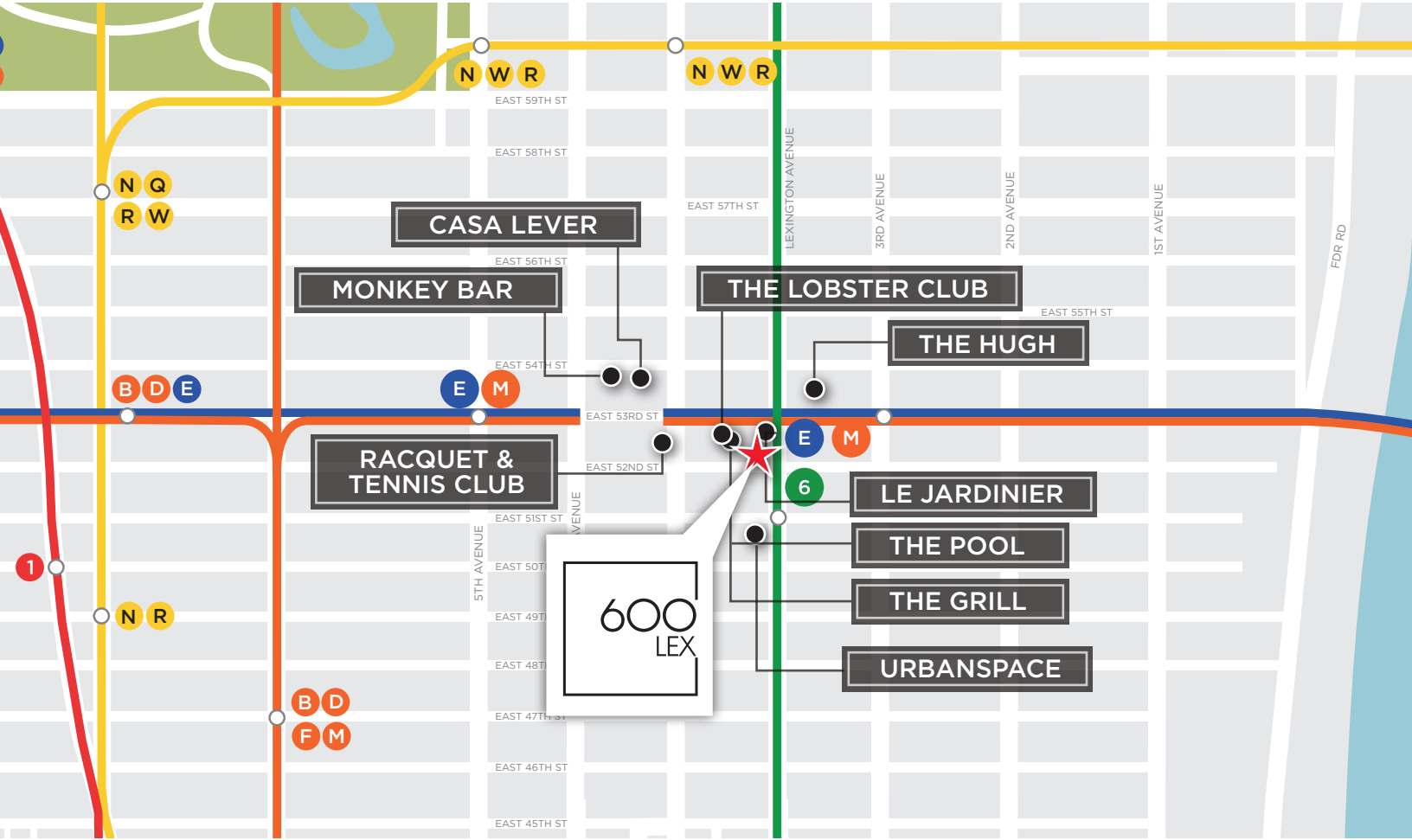


# 17<sup>TH</sup> FLOOR





# NEIGHBORHOOD MAP





600  
LEX

