

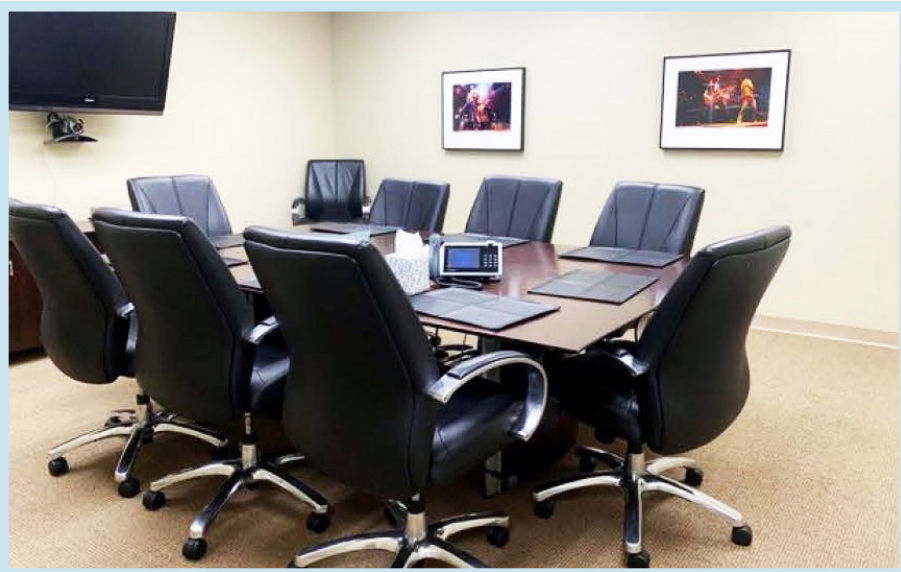
810 Seventh Avenue



NEW Below Market Sublease Opportunity

Suite 1701

8,747 RSF



17th Floor

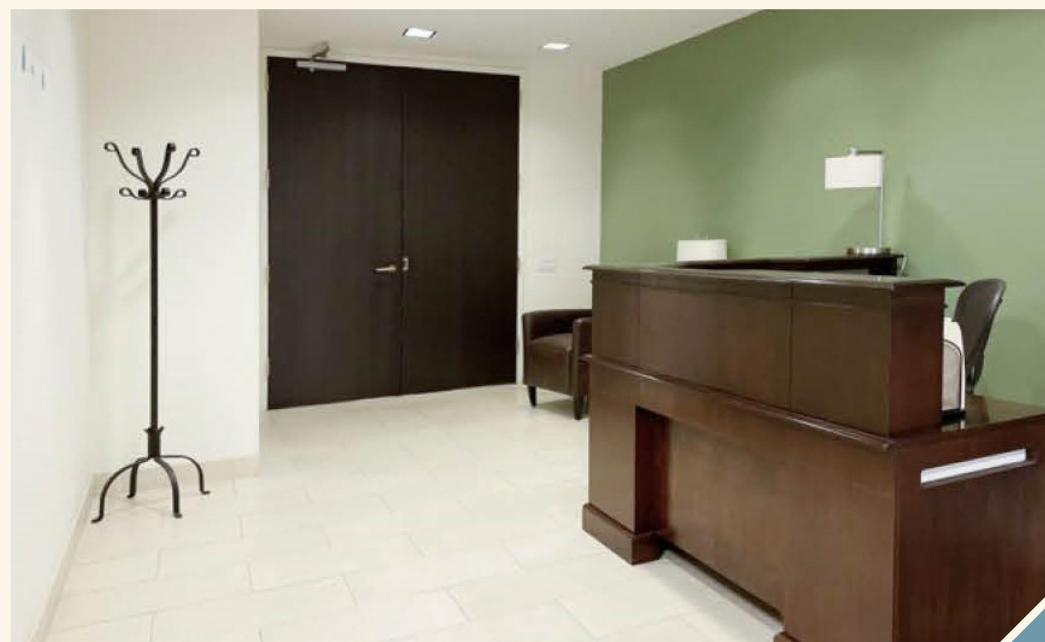
Immediate Possession

Sublease Term until January 2025

Details

- Space comprises of 12 offices (including 1 large corner office), 17 workstations, 1 small conference room, 1 large conference room, reception area, pantry, server room, and copy/storage room
- Furniture can be made available
- North views of Central Park
- Recently renovated building lobby, common areas, bathrooms, and elevator cabs (12 passenger elevators)
- 200 car on-site parking garage
- 24/7 attended lobby
- Access to several transit lines

Fully Furnished Office Space with Views of Central Park



810 Seventh Avenue

