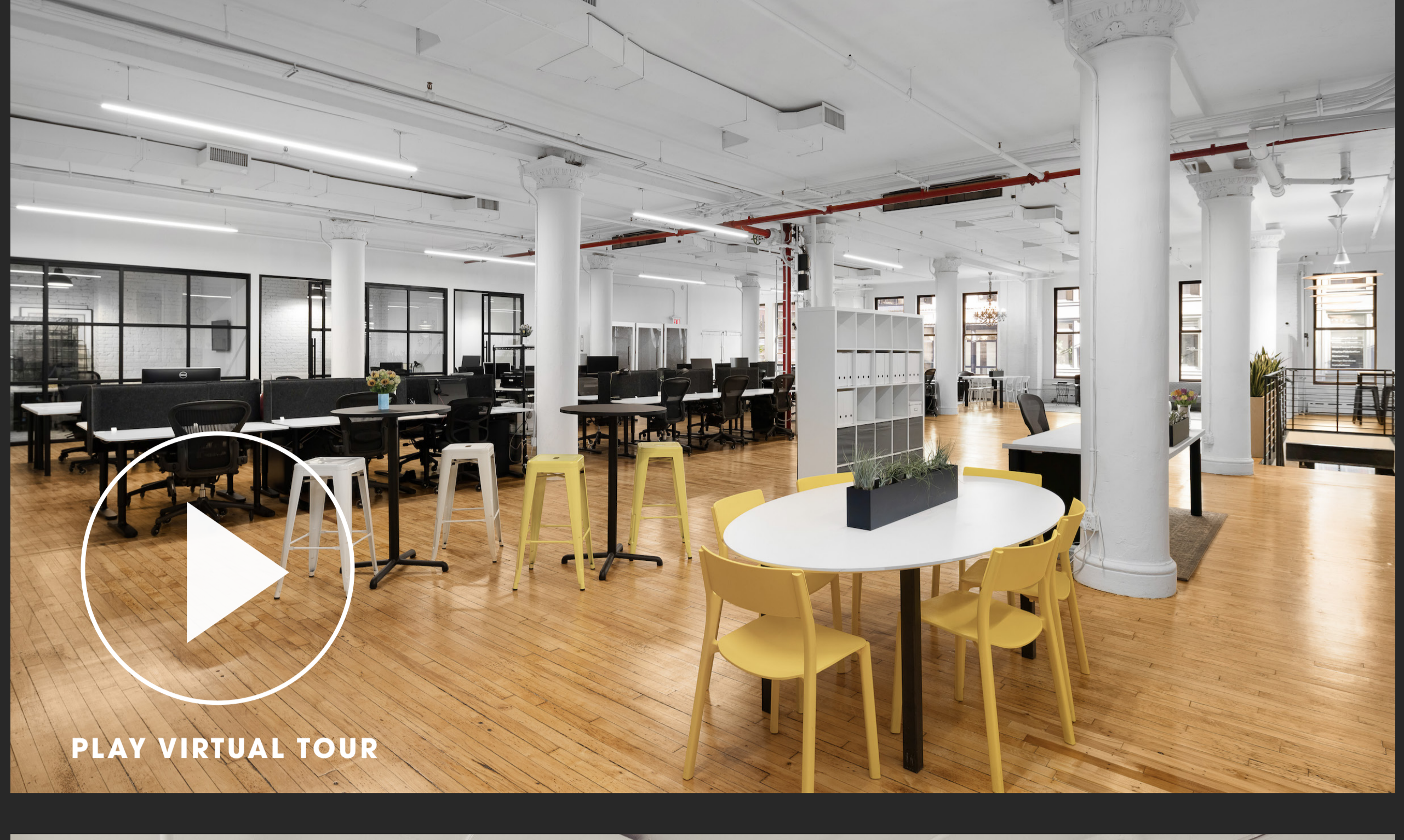




# 4 2 W 2 4

Unique Furnished Opportunity in the **Heart of Nomad**  
**8,771 SF** with Private Entrance and Branding



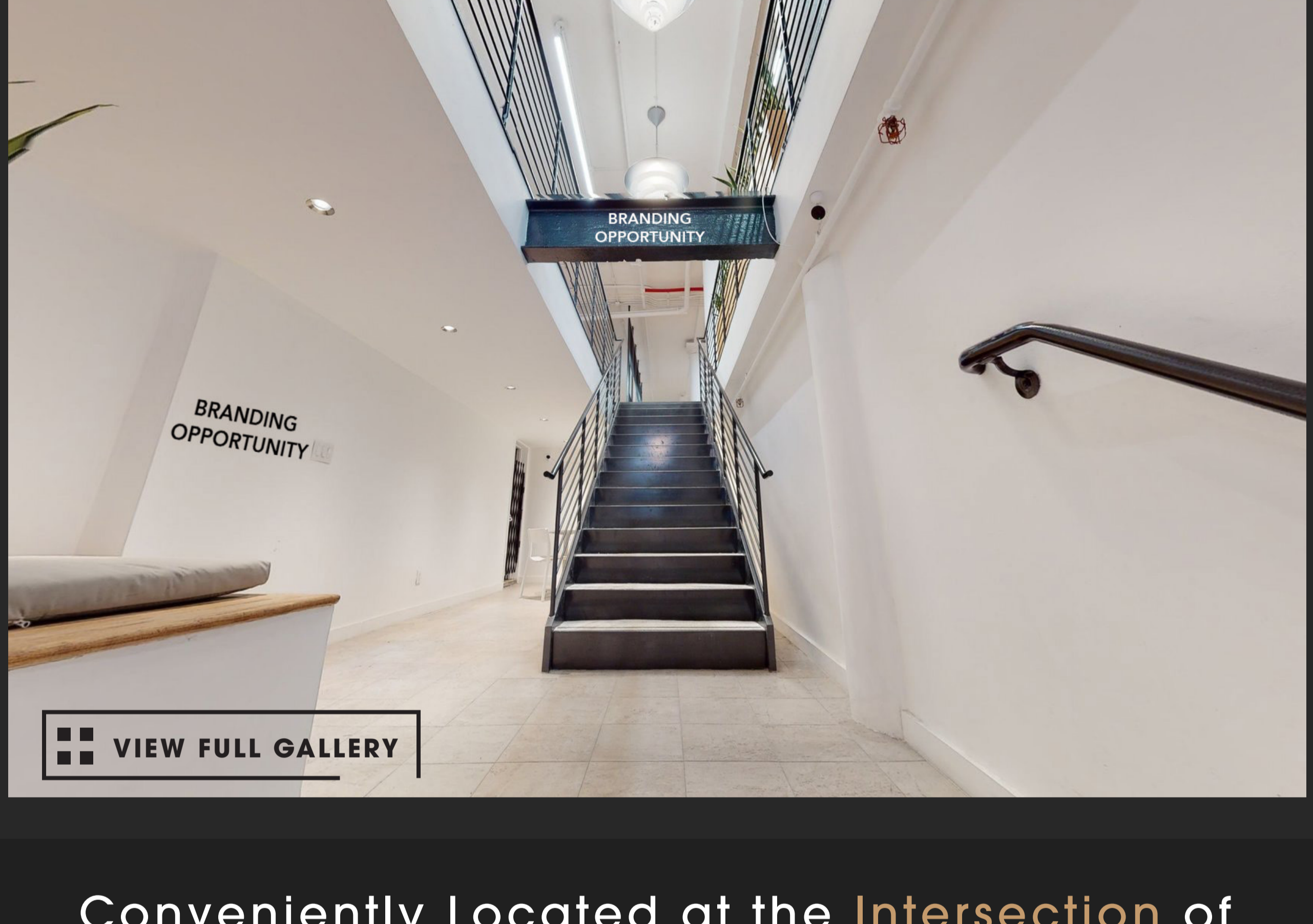
PLAY VIRTUAL TOUR



## HIGHLIGHTS

- Dedicated private entrance with direct street access via stair and elevator
- Exclusive branding opportunity including entrance, lobby and mezzanine
- Move-in ready, fully furnished and wired space
- High-end open installation with full glass-front offices and conference / meeting rooms
- Close proximity to Madison Square Park
- Surrounded by an abundance of Nomad, Flatiron and Chelsea neighborhood amenities
- Conveniently located near multiple subways

C E F M N E R W 1 6 NJ PATH



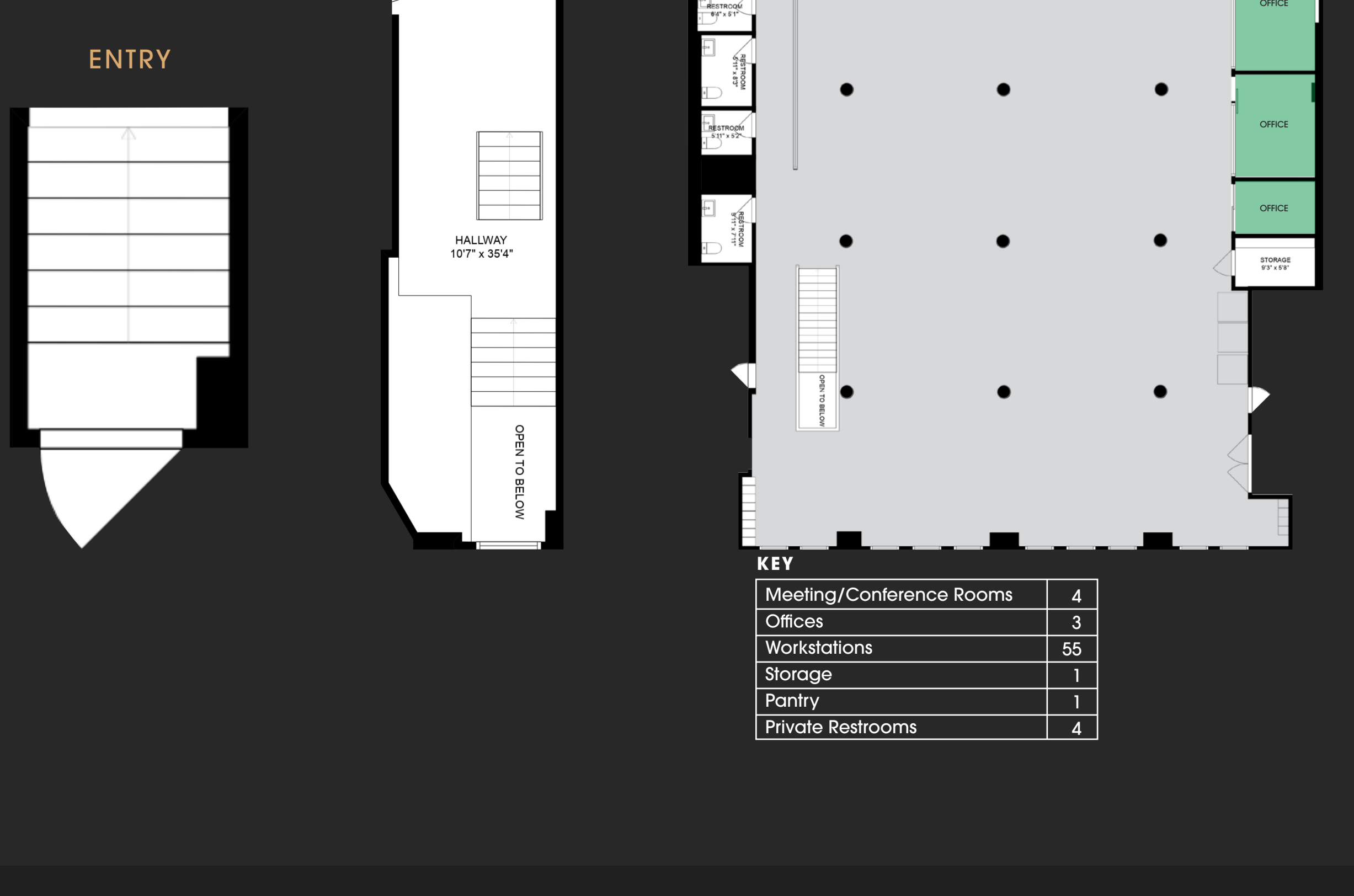
VIEW FULL GALLERY

## Conveniently Located at the Intersection of Nomad, Flatiron and Chelsea



## FLOORPLAN

2ND FLOOR WITH PRIVATE ENTRANCE AND MEZZANINE  
**8,771 SF**



KEY	Count
Meeting/Conference Rooms	4
Offices	3
Workstations	55
Storage	1
Pantry	1
Private Restrooms	4