



280 PARK AVENUE

ENTIRE 27TH FLOOR

8,936 RSF AVAILABLE FOR SUBLEASE

280 PARK AVENUE, NEW YORK, NY 10017

MULTIPLE CONFERENCE ROOMS



ICONIC NEW YORK VIEWS



BREAKROOM



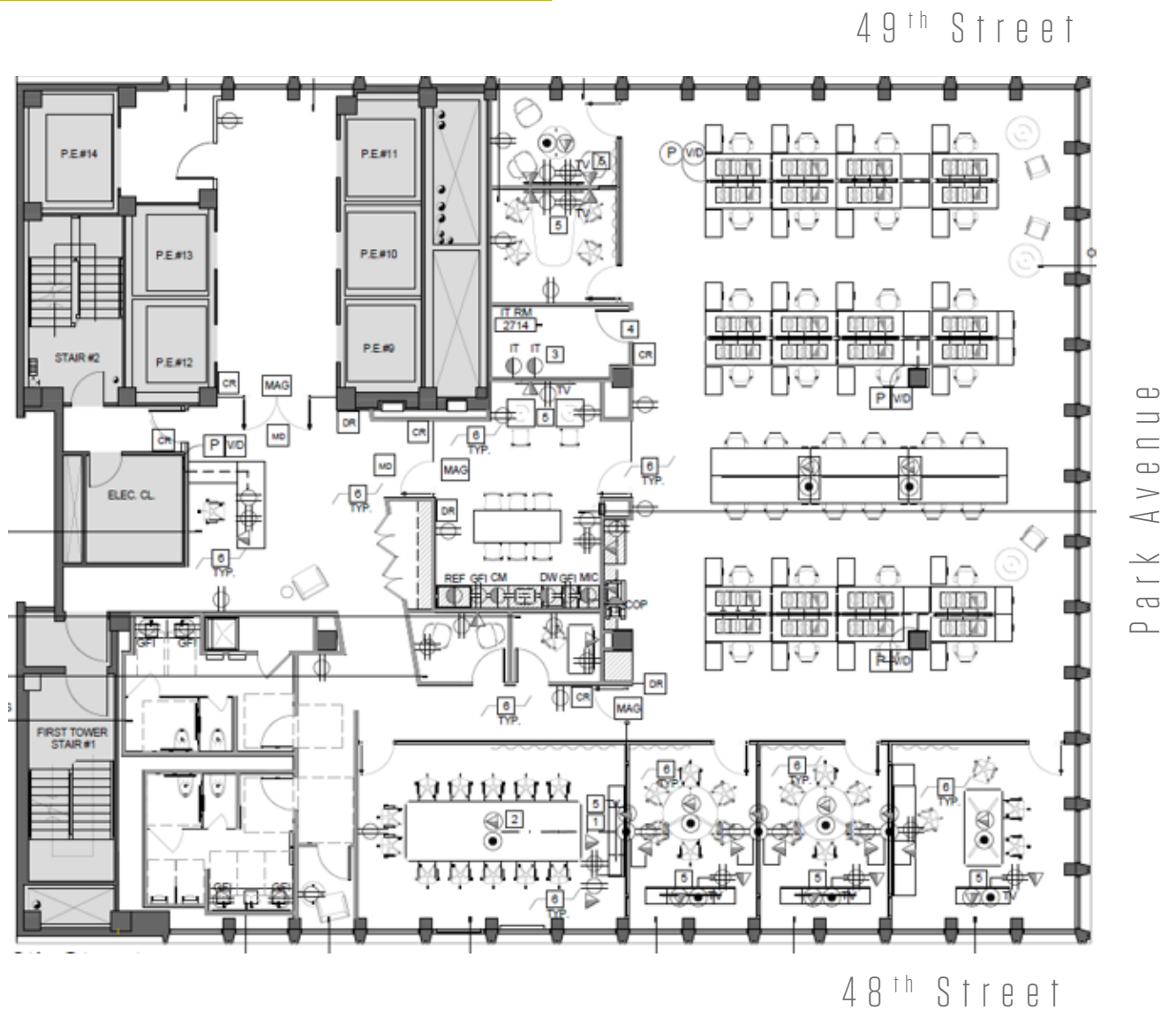
RECEPTION AREA

SPACE HIGHLIGHTS

- Brand new buildout
- High-end engineered / Acoustically rated office front system
- Glass panel clear stories on partitions
- Mother / Wellness room
- Space: Entire 27th Floor - 8,936 RSF
- Possession: TBD
- Term: Through April 30, 2038*

**Potential for cancellation 2033*

FLOOR PLAN

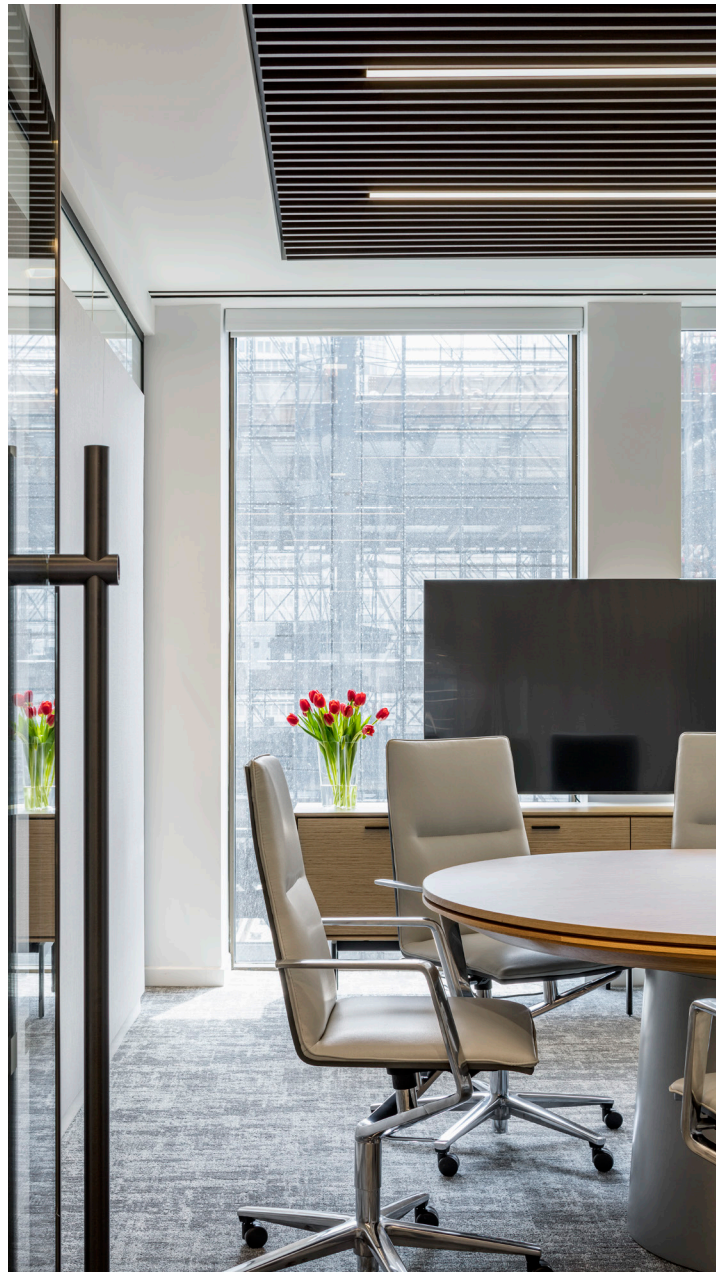


STRATEGICALLY LOCATED

280 Park Avenue is walking distance from The Waldorf Astoria, The Palace Hotel, Intercontinental, W, and Hyatt Hotels, and from such destination restaurants as La Brasserie and Casa Lever, among many others.

With such amenities and immediate access to Grand Central's Northwest passage, **280 Park Avenue** is a standout within its competitive set.

Short walk to the following transit lines:



AREA MAP

