



PRIME SPACE FOR SUBLEASE

1140

A
O
A

High-End Installation,
Move-In Ready

Floor

Entire 19th

Size

8,518 RSF

Term

Through September 30, 2025

Possession

Fall 2021

Newly refurbished lobby
and state-of-the-art
building systems.

Located a short walk
to Bryant Park and
Grand Central Terminal.

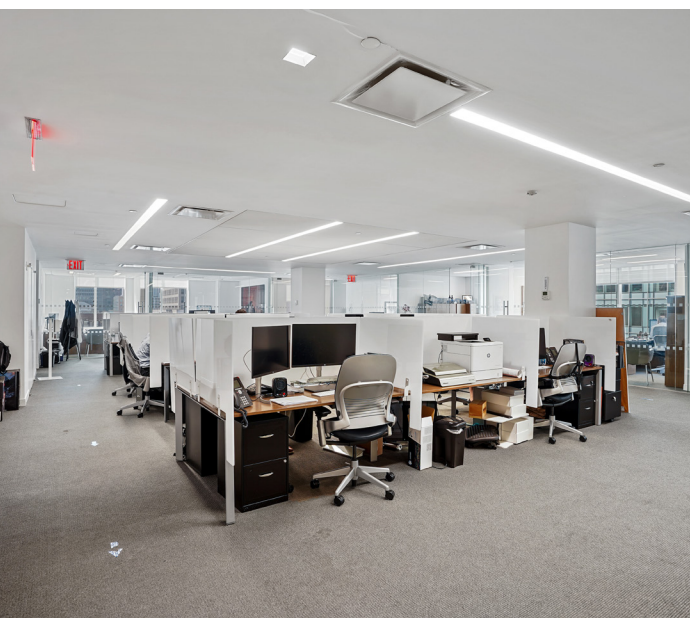
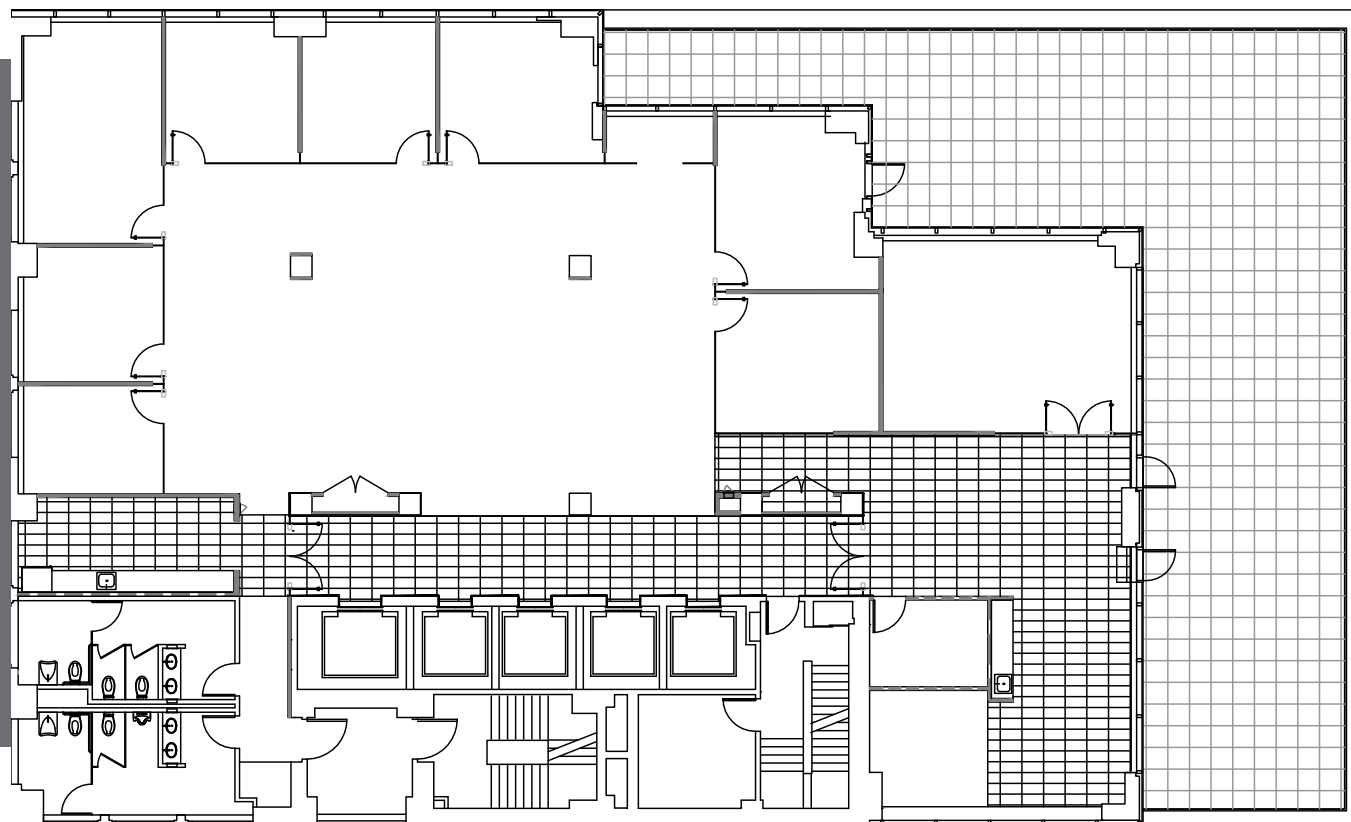
Features expansive
wraparound terrace.

Fully wired and furniture
can possibly stay.



Space Features

- Reception
- Pantry
- 8 private offices
- 1 large conference room
- Open area
- Exclusive terrace





Expansive Wraparound Terrace



Terrace Views