

# 489 FIFTH AVENUE

ENTIRE 14A FLOOR 4,251 RSF  
ENTIRE 14TH FLOOR 4,988 RSF  
TOTAL: 9,239 RSF

**BOUTIQUE  
FULL FLOORS  
AVAILABLE**





## AVAILABLE FLOORS

ENTIRE 14A: **4,251 RSF**  
ENTIRE 14TH: **4,988 RSF**  
**TOTAL: 9,239 RSF**

## POSSESSION

**IMMEDIATE**  
**IMMEDIATE**



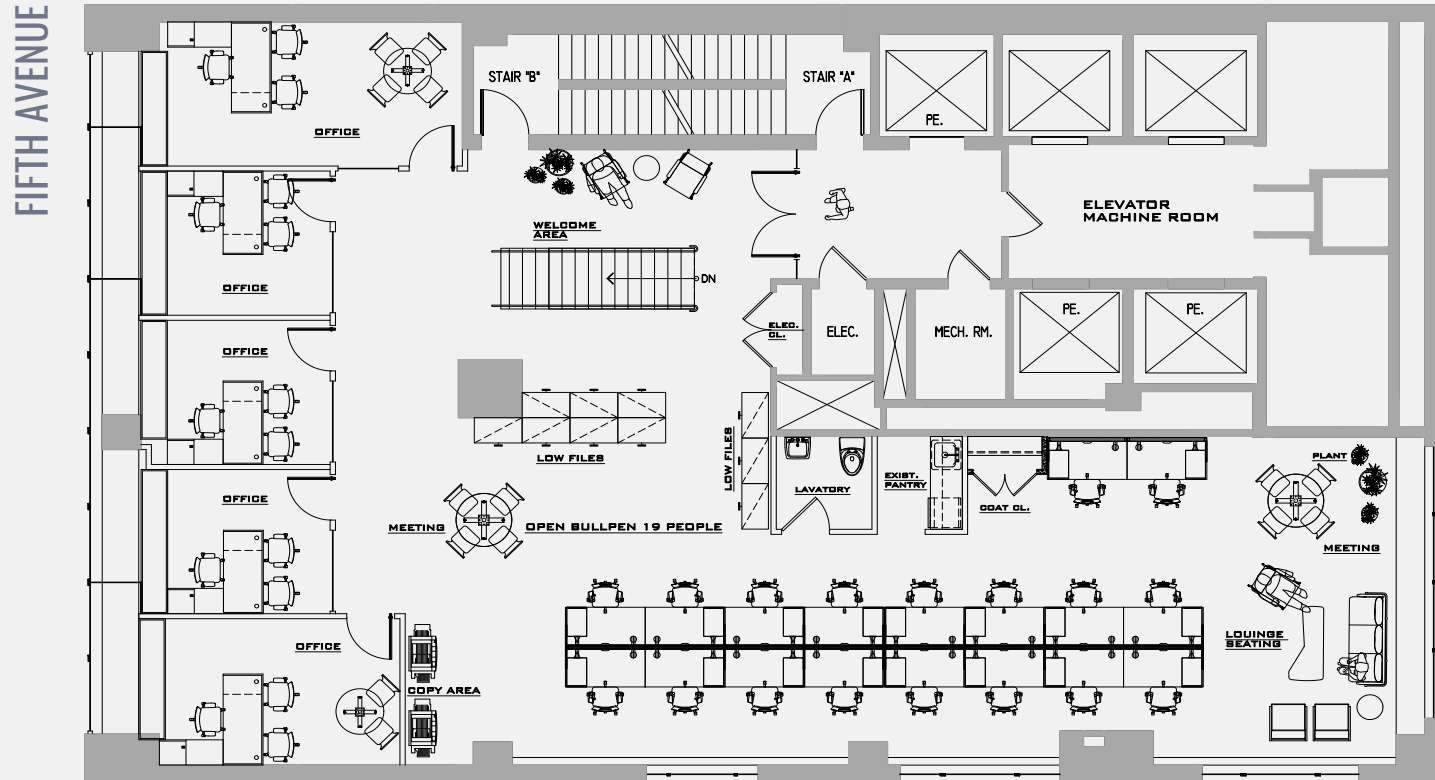
## BUILDING FEATURES:

- Spectacular light and views overlooking Bryant Park and New York Public Library
- Recently upgraded lobby and elevators
- Steps from Bryant Park, New York Public Library, boutique hotels, high-end restaurants, shopping and fitness clubs
- Walking distance to Grand Central, Penn Station and Port Authority
- Multiple Citi Bike docks in close proximity
- Walking distance to subways **4 5 6 S 7 B D F M 1 2 3**

## SPACE FEATURES:

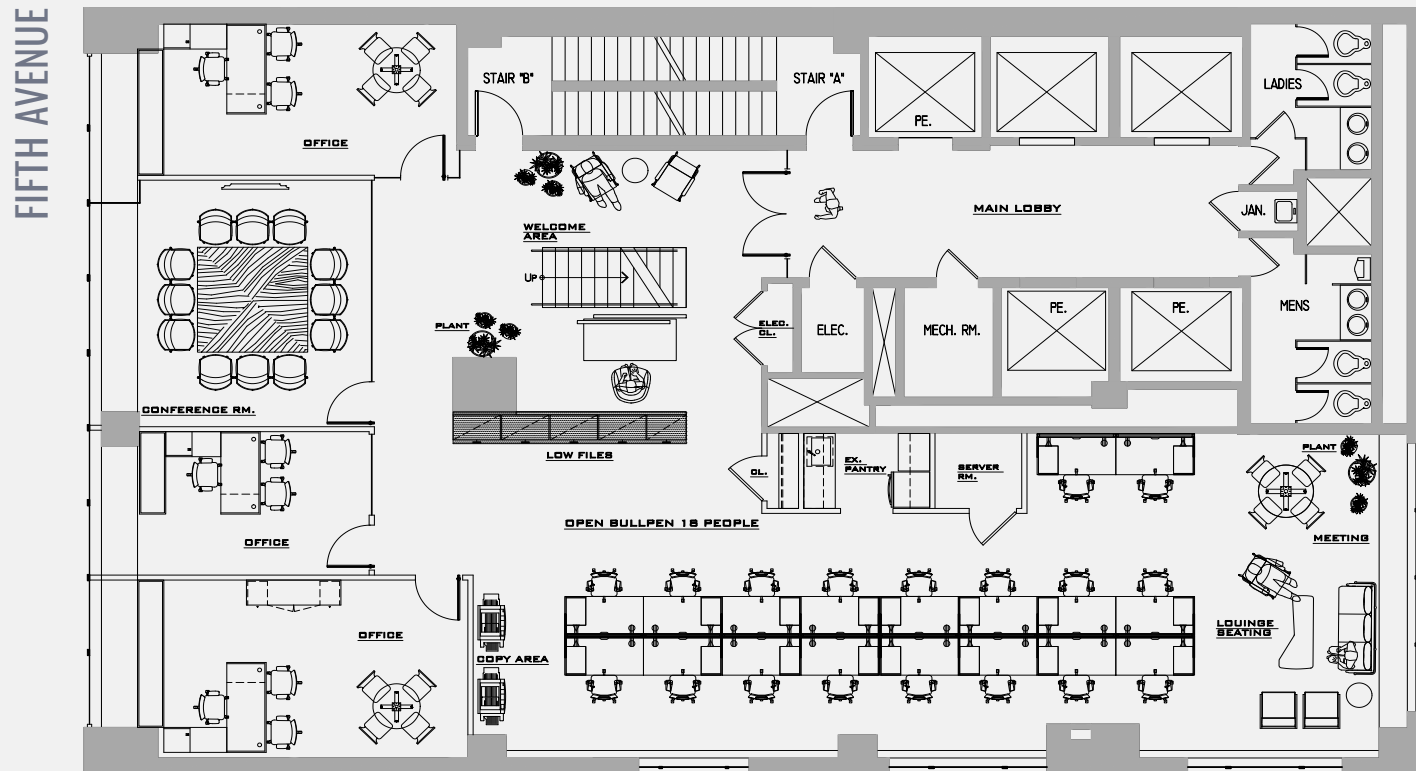
- 14A and 14th Floors - Must be leased together as duplex. Currently in raw condition with internal staircase. Landlord to turnkey for tenant using high-end pre-built standard finishes.

489  
FIFTH  
AVENUE



# ENTIRE 14TH FLOOR - 4,988 RSF

## PROPOSED PLAN



489  
FIFTH  
AVENUE