

590

MADISON

Sublease

Partial 9th | 9,294 RSF
May 2022 Possession
Through January 2024

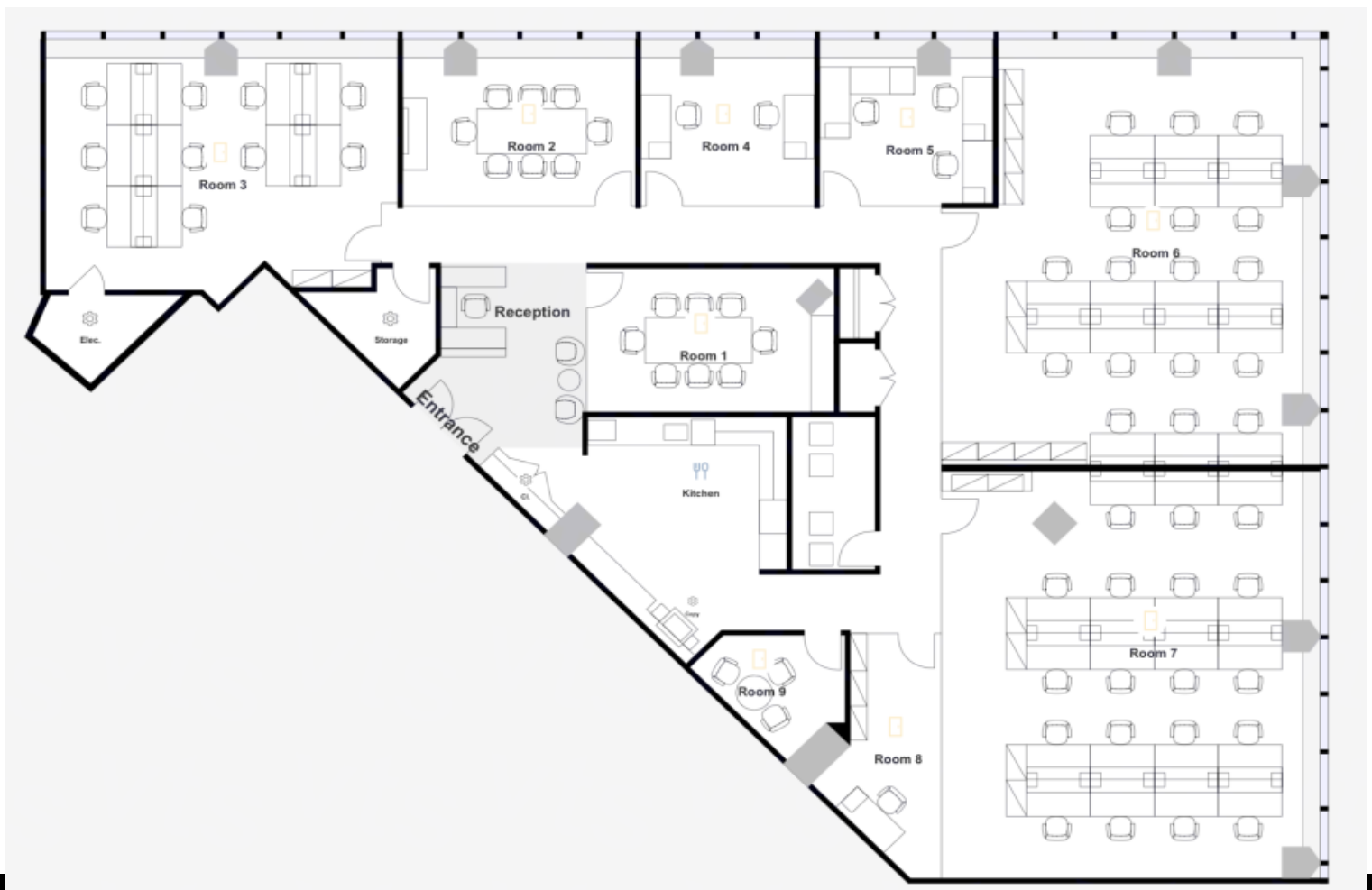


590

MADISON

Floorplan

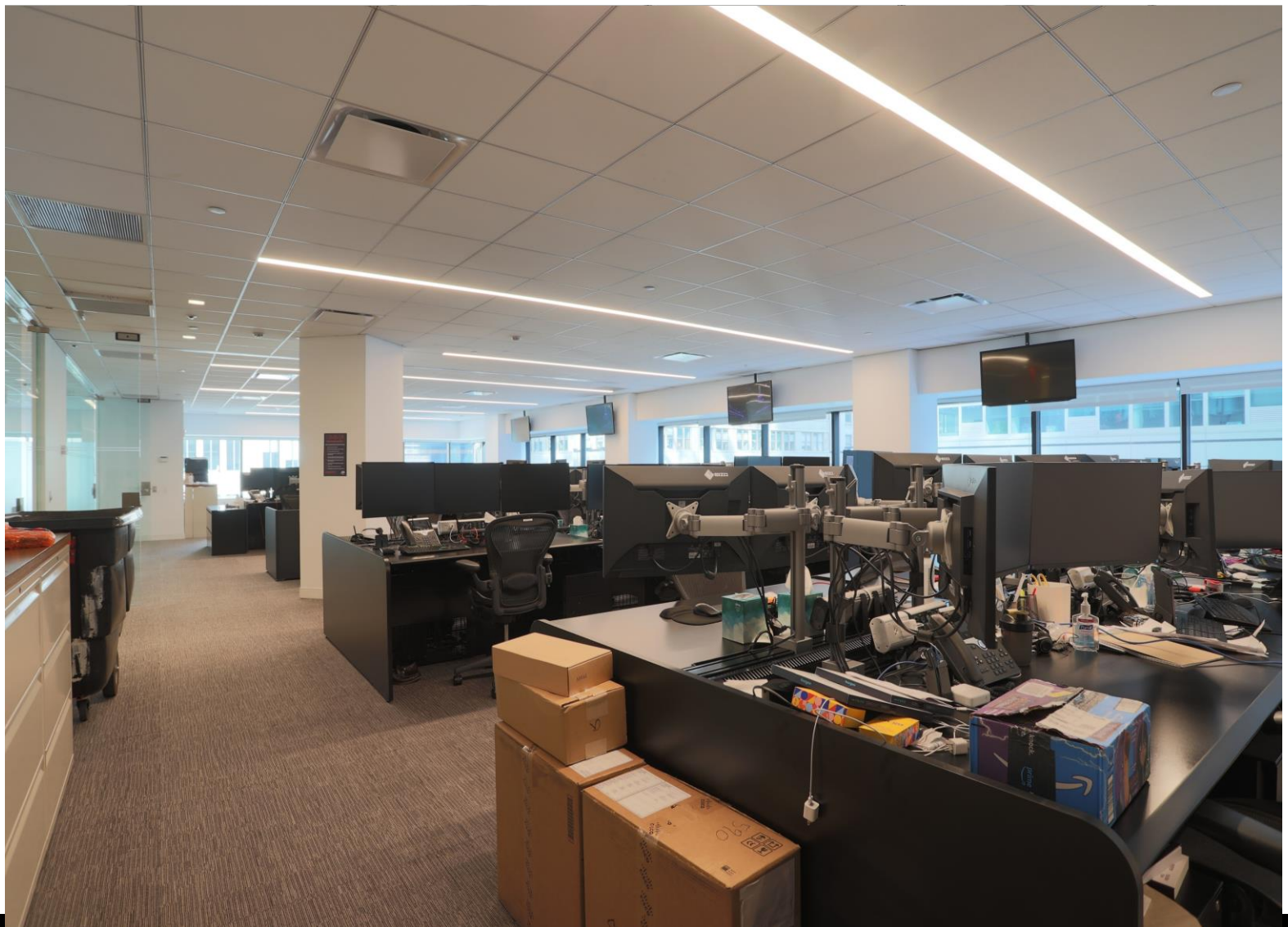
- High-end, plug and play trading installation from a strong-credit tenant
- Built with 2 open areas (36 and 10 workstations respectively), 2 conference rooms, 3 offices / meeting rooms, 1 managing partner's office, and large pantry
- Access to the following amenities: brand-new gym including Peloton bikes and locker rooms, lounge, golf simulator, and atrium with a full-service restaurant and grab-and-go café
- Building boasts a strong financial services tenant roster



590

MADISON

Photos



Photos

