

EXCLUSIVE  
LISTING

# 88 PRINCE STREET

AKA 561 BROADWAY

SOHO, NYC





# 88 PRINCE STREET

AKA 561 BROADWAY

## Prime full floor office space for lease in SoHo's historic Singer Building

**LOCATION** 88 Prince Street aka 561 Broadway

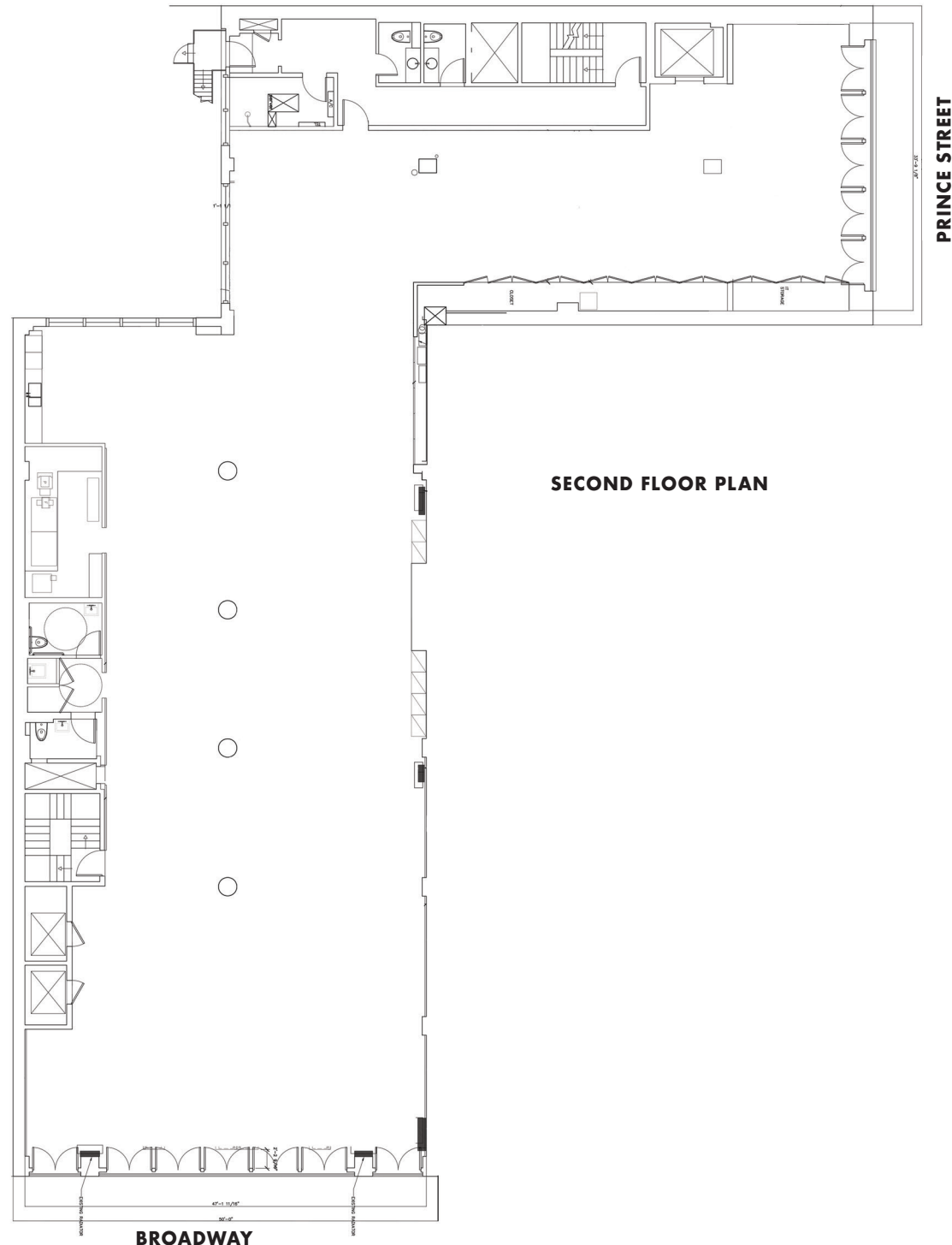
**AREA (approx.)** Entire 2nd Floor 9,315 RSF

**RENT** \$447,120 /year  
\$37,260 /month  
\$48 RSF

**POSSESSION** Immediate

**CEILING HEIGHT** 10' 5"  
(approx.)

- COMMENTS**
- Full floor for lease in one of Soho's most iconic buildings. The Little Singer Building is a low-traffic, mixed-use co-op building located at the epicenter of Soho, steps from the Prince Street Subway
  - The 2nd floor is currently configured as open space with wet-pantry, IT room, storage rooms and closets, and four restrooms in place
  - Landlord to provide new hardwood floors
  - Three elevators: 2 from Broadway lobby; 1 from Prince Street lobby
  - Oversized windows with intricate ironwork overlook Prince Street and Broadway. Additional rear windows
  - Building will be installing a new high-end virtual doorman



# 88 PRINCE STREET

AKA 561 BROADWAY



Renderings show  
proposed new  
wood floors





# 88 PRINCE STREET

AKA 561 BROADWAY



Current conditions





# 88 PRINCE STREET

AKA 561 BROADWAY



Renderings show  
proposed new  
wood floors





# 88 PRINCE STREET

AKA 561 BROADWAY



Current conditions





# 88 PRINCE STREET

AKA 561 BROADWAY



Current conditions





# 88 PRINCE STREET

AKA 561 BROADWAY

